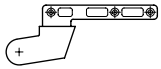


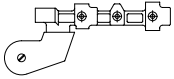
Top pivots and lever arms for bottom door closers for stop doors, suitable for all bottom door closers with flat conical spindle and door hinges with 36 mm pivoting point

## Door-Series

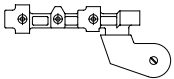
2.1 EU
•
•
•
•
•
•
•



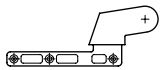
**Z 990 043 02**  
**Z 990 043 64**  
Top pivot with cover cap, for doors opening **in**



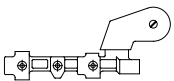
**Z 992 290 02 DIN L**  
**Z 992 290 64 DIN L**  
Lever arm with cover cap, for doors opening **in**



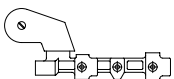
**Z 992 292 02 DIN R**  
**Z 992 292 64 DIN R**  
Lever arm with cover cap, for doors opening **in**



**Z 994 078 02**  
**Z 994 078 64**  
Top pivot with cover cap, for doors opening **out**



**Z 994 079 02 DIN L**  
**Z 994 079 64 DIN L**  
Lever arm with cover cap, for doors opening **in**



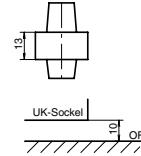
**Z 994 080 02 DIN R**  
**Z 994 080 64 DIN R**  
Lever arm with cover cap, for doors opening **out**

**Attention!**  
Use bottom door closers only in combination with door hinges with 36 mm pivoting point!

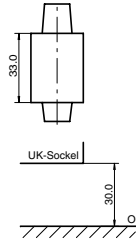
## Door-Series

2.1 EU
•
•
•
•
•

Plug-in axes for stop doors, suitable for DORMA bottom door closers

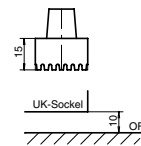


**Z 911 301**  
Plug-in axis, extended by **10 mm**

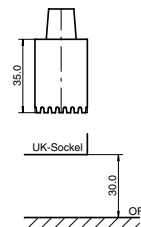


**Z 911 302**  
Plug-in axis, extended by **30 mm**

Plug-in axes for stop doors, suitable for GEZE bottom door closers



**Z 911 303**  
Plug-in axis, extended by **10 mm**



**Z 911 304**  
Plug-in axis, extended by **30 mm**