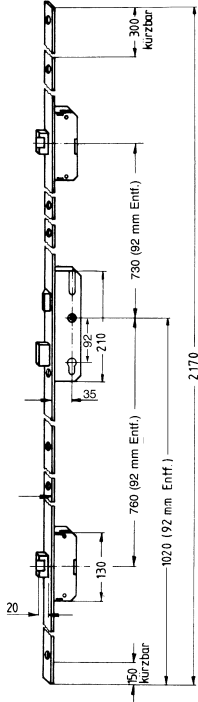


## Safety equipment

Processing and assembling drawing: Register 700

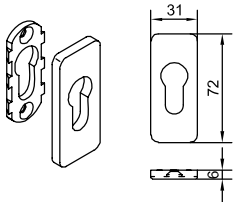
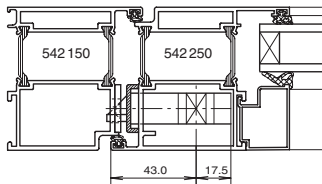
### Safety equipment for doors opening in with profile B 521250



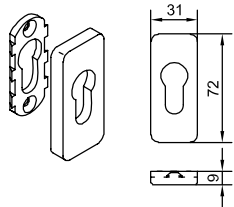
**Z 994 179 31**  
Three-bolt safety lock, suitable for DIN L and DIN R, 35 mm backset, 8 mm square pin (with change-over) locking with 20 mm throw, including strike plate and locking pieces for locking systems, lock forend and strike plates made of rustproof material

**Attention!**  
Min. sash height 1950 mm

**Z 994 182**  
Fixing material set for three-bolt safety lock



**Z 994 065 02**  
**Z 994 065 64**  
Profile cylinder rosette, Safety rosette, two-part  
Height 6 mm



**Z 994 067 02**  
**Z 994 067 64**  
Profile cylinder rosette, Safety rosette, two-part  
Height 9 mm



**Z 911 160**  
Safety profile cylinder, 30 / 55 mm matt nickel, protected against drilling, with 3 keys

### Door-Series

2.1 EU

•

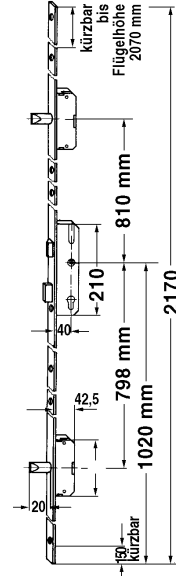
•

•

•

•

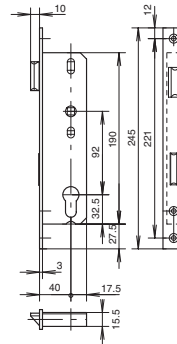
### Safety equipment for single and double sash doors with profiles B 521252 / 253



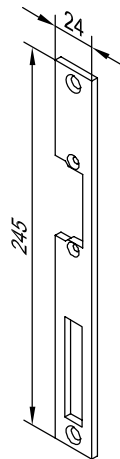
**Z 994 361** galvanized  
**Z 994 361 64** painted  
**Z 994 361 31** rustproof  
Three-bolt safety lock, suitable for DIN L and DIN R, 35 mm backset, 8 mm square pin (with change-over) locking with 20 mm throw, including locking pieces for locking systems, however excluding strike plate for the lock area

**Z 994 371**  
Fixing material set for three-bolt safety lock

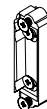
**Z 912 693 31**  
**Z 912 693 64**  
Strike plate for the main lock area



**Z 911 275**  
Mortise lock, 40 mm backset, 8 mm square pin (with change-over) suitable for strike plates  
Z 912 693 / 695



**Z 994 341 31**  
Strike plate for the main lock area, designated for electric door opener suitable for DIN L and DIN R, for three-bolt safety lock and mortise lock



**Z 904 290**  
Strike plate insert piece, adjustable, designated for electric door opener

### Door-Series

2.1 EU

•

•

•

•

•

•

Door handles and push grips with accessories  
Processing and assembling drawing: Register 700

Door-Series

Door-Series

2.1 EU

2.1 EU



**Z 912 345 02**  
**Z 912 345 64**  
Door handle set, with return spring, drill-proof narrow shield 36 x 250 mm, fixed knob on the outside, including 8 mm square pin and 3 continuous fixing screws  
Drill hole: Profile cylinder, A = 92 mm



**Z 912 343 02**  
**Z 912 343 64**  
Door handle set, with return spring, drill-proof narrow shield 36 x 250 mm, bow-handle on the outside, including 8 mm square pin and 3 continuous fixing screws  
Drill hole: Profile cylinder, A = 92 mm



**Z 912 360 02**  
**Z 912 360 64**  
Door handle set, with return spring, drill-proof narrow shield 36 x 250 mm, fixed knob on the outside, including 8 mm square pin and 3 continuous fixing screws  
Drill hole: Profile cylinder, A = 92 mm



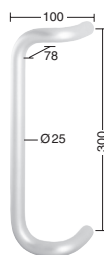
**Z 912 346 brass**  
Door handle set, with return spring, drill-proof narrow shield 36 x 250 mm, bow-handle on the outside, including 8 mm square pin and 3 continuous fixing screws  
Drill hole: Profile cylinder, A = 92 mm



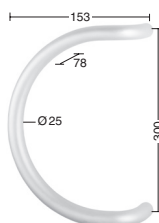
**Z 912 344 02**  
**Z 912 344 64**  
Door handle, half, with return spring, drill-proof narrow shield 36 x 250 mm, fixed knob on the outside, including firmly fitted 8 mm square pin, Length = 40 mm and 3 continuous fixing screws  
Drill hole: Profile cylinder, A = 92 mm



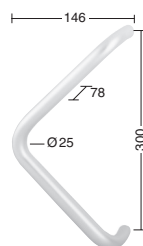
**Z 912 347**  
Door handle, half, with return spring, drill-proof narrow shield 36 x 250 mm, fixed knob on the outside, including firmly fitted 8 mm square pin, Length = 40 mm and 3 continuous fixing screws  
Drill hole: Profile cylinder, A = 92 mm



**Z 912 348 02**  
**Z 912 348 64**  
Push grip, shape "cranked"  
Diameter: 25 mm  
Gauge for drill holes: 300 mm  
Projection: 100 mm  
Depth: 78 mm  
Optional narrow shield set Z 912 351  
**Please order fixing set separately!**



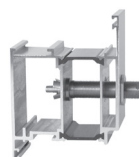
**Z 912 349 02**  
**Z 912 349 64**  
Push grip, shape "semi-circle"  
Diameter: 30 mm  
Gauge for drill holes: 300 mm  
Projection: 210 mm  
Depth: 90 mm  
Optional narrow shield set Z 912 351  
**Please order fixing set separately!**



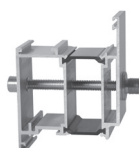
**Z 912 350 02**  
**Z 912 350 64**  
Push grip, shape "triangular"  
Diameter: 25 mm  
Gauge for drill holes: 300 mm  
Projection: 146 mm  
Depth: 78 mm  
Optional narrow shield set Z 912 351  
**Please order fixing set separately!**



**Z 912 351 02**  
Narrow shield set with door handle (inside), including fixing material, suitable for push grips Z912 348/349/350  
**Note:** Narrow shield set only available in aluminium C-O (02)



**Z 912 377**  
Fixing set "exterior" for push grips Z 912 348/349/350 one-sided, invisible fixing  
Drill hole diameter = 10 mm, drill using flat countersink diameter = 10/15



**Z 912 378**  
Fixing set "on both sides" for push grips Z 912 348/349/350 two-sided, invisible fixing, Drill hole diameter = 10 mm, drill using flat countersink diameter = 10/15