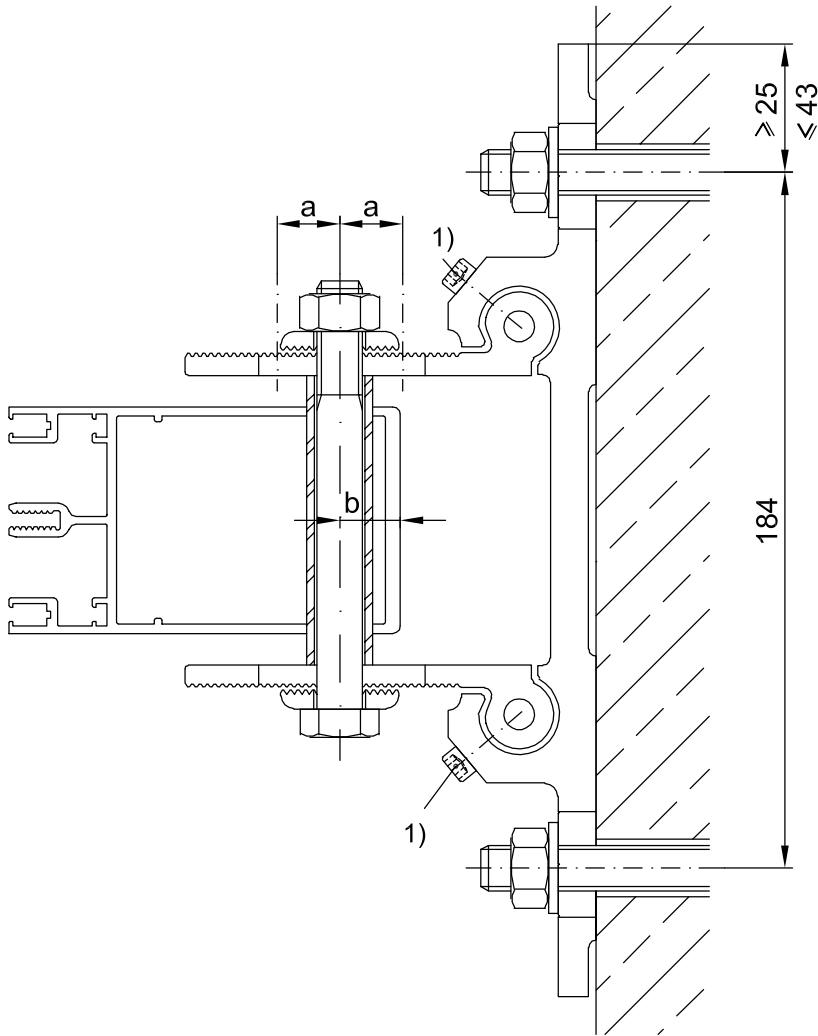
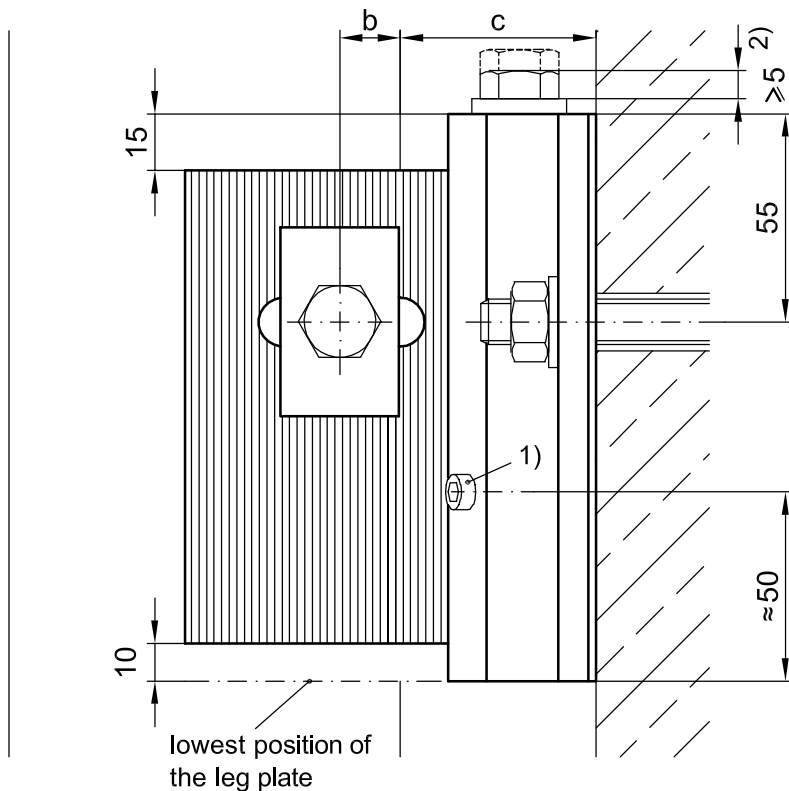


**Mullion adjustment area  
Long console  
Façade 1.0 VF50**



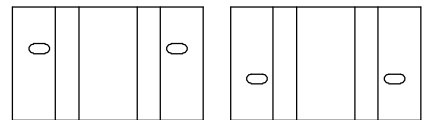
Mullion depth	a	b	c	
			min	max
76.5	16	16	36	68
103.5	16	16	36	68
≥ 136.5	16	38	14	46

- 1) For fixed bearing only:  
Screw 24 081 0 (4.8x19)  
or alternatively 912 749.  
Pre-drill wall panel,  
diameter 5 mm.  
Leg plate to be drilled  
by building contractor,  
diameter 4.5 mm, after  
height adjustment.
- 2) For movable bearing.



**Information:**

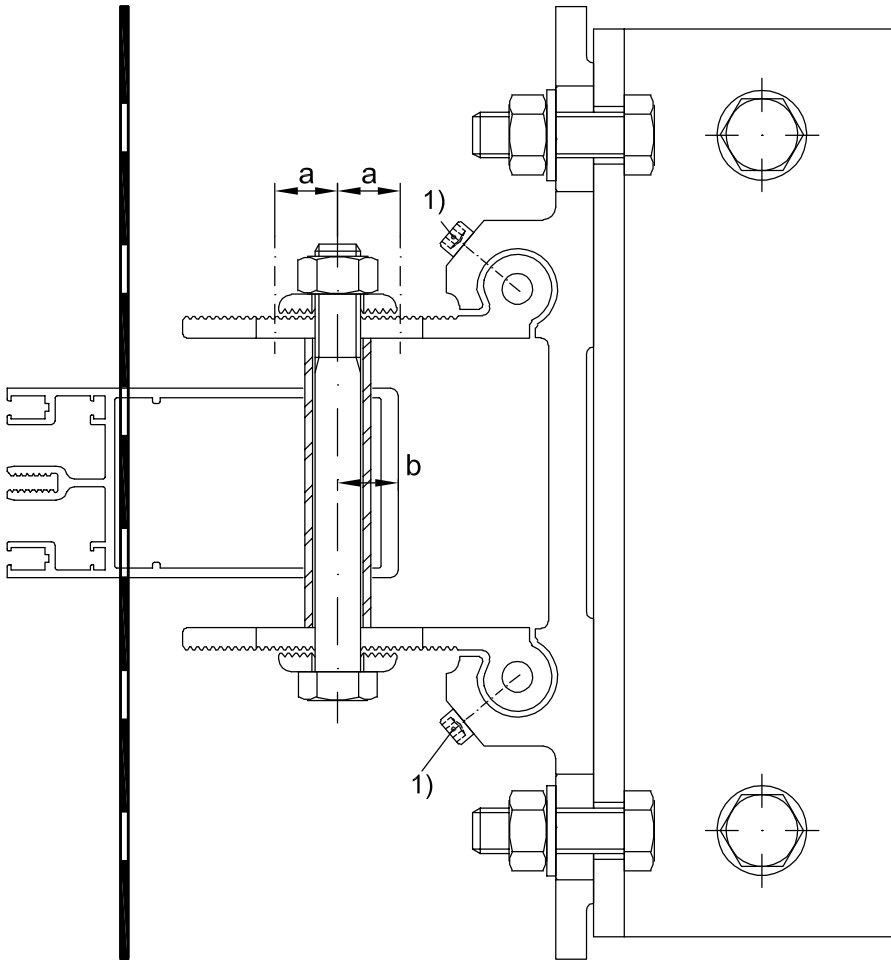
Please observe the position  
of the slots in the wall panel.



correct

incorrect

**Mullion adjustment area**  
**Short console**  
**Façade 1.0 VF50**



Mullion depth	a	b	c	
			min	max
76.5 <sup>3)</sup>	16	16	36	68
103.5	16	16	36	68
≥ 136.5	16	38	14	46

1) For fixed bearing only:  
 Screw 24 081 0 (4.8x19)  
 or alternatively 912 749.  
 Pre-drill wall panel,  
 diameter 5 mm.  
 Leg plate to be drilled  
 by building contractor,  
 diameter 4.5 mm,  
 after height adjustment.

2) Slot milling for connection  
 foil to the structure

3) Not in connection with  
 short console at  
 head and sill

