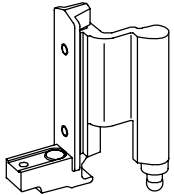


Side-hung sash fitting, clamp-on design, concealed, with external pivoting point, for studio and semi-circular arched windows
Processing drawing: Register 200

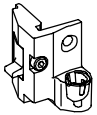
Attention!
Cutting for sash width ≤ 700 mm:
FB = LRB + 8 mm



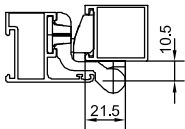
**Basic fitting
excluding handle**

**Z 995 626 02 DIN L
Z 995 626 64**

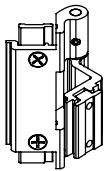
**Z 995 627 02 DIN R
Z 995 627 64**



with hinge,
corner hinge and corner bearing,
max. sash weight **60 kg**,
complete, excluding operating rods
P 496 099

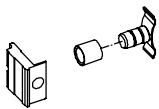


Minimum space required
at the frame = 22 mm



**Z 993 419 02
Z 993 419 64**

Side and bottom-hung sash hinge,
clamp-on design, three-part,
suitable for DIN L and DIN R,
can be used as a centre hinge



Z 994 162
Additional vertical lock,
required from a sash height of 1400 mm
can be inserted with centre hinge
Z 993 419

Z 991 998
**Additional upper
horizontal lock,**
to be inserted from a sash width of
1000 mm, including upper operating rod,
only required for semi-circular arches

Z 904 943
Strike plate, adjustable,
can be used optional to **Z 911 600**

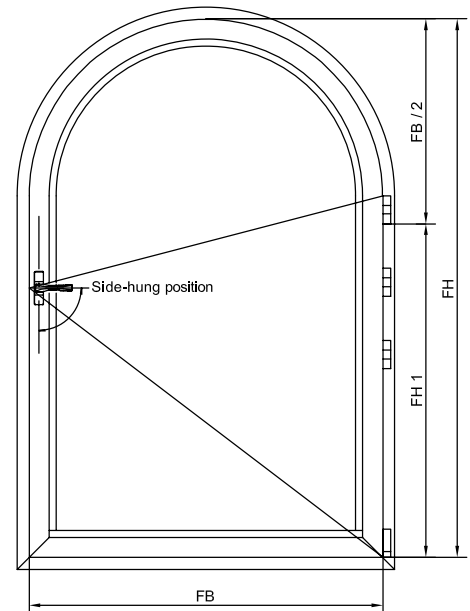
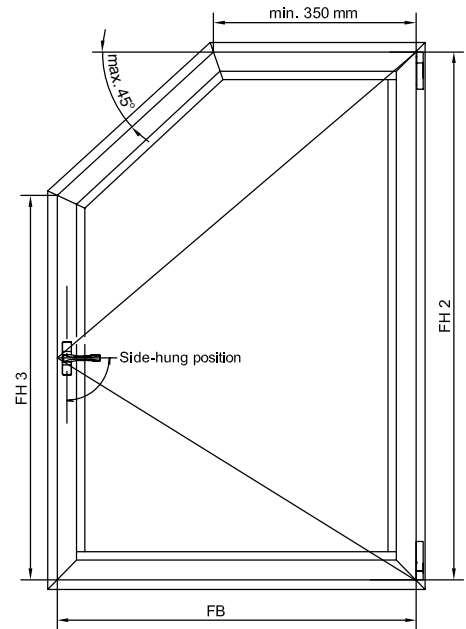
With masonry reveals and inward-projecting mullion
profiles install a stay-arm opening limiter (see Accessories).

Templates and punching tools:
see Auxiliary accessories and tools (HW)

For special paint please note the delivery time!

Series

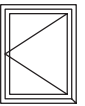
	1.0	1.0 IF	A 72
Basic fitting excluding handle	•		•
Basic fitting with hinge	•		•
Side and bottom-hung sash hinge	•		•
Additional vertical lock	•		•
Additional upper horizontal lock	•		•
Strike plate	•		•



Window sash dimensions		
Studio	Sash height	Sash width
Semi-circular arch	min. FH ₁ = 780 mm	
Studio	min. FH ₂ = 1100 mm	
Studio	min. FH ₃ = 760 mm	
	max. FH = 1400 mm	max. FB = 1250 mm
Door sash dimensions		
	Sash height	Sash width
	max. FH = 2000 mm	min. FB = 600 mm
		max. FB = 950 mm

Max. sash weight: 60 kg
Max. insert element weight: 25 kg/m²
Max. sash size: 1.75 m²

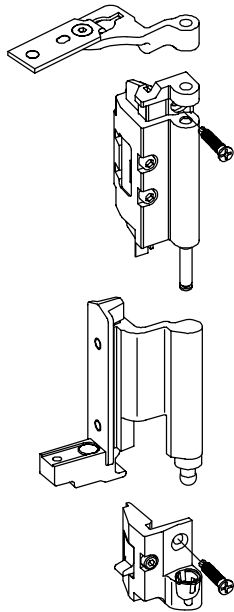
Please observe the application diagrams!



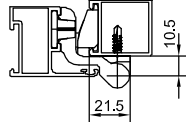
Side-hung sash fitting, clamp-on design, concealed, with external pivoting point,
Processing drawing: Register 200

Series Order list for bulk packaging

Attention!
Cutting for sash width ≤ 700 mm:
FB = LRB + 8 mm



A Basic fitting excluding handle
Z 995 663 02 DIN L
Z 995 663 64
Z 995 664 02 DIN R
Z 995 664 64
400 mm stay-arm hinge,
made of rustproof material,
max. sash weight **100 kg**,
with additional screws
max. sash weight **125 kg**,
complete, excluding operating rods
P 496 099

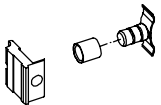


Minimum space required
at the frame = 22 mm

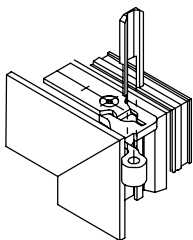


Z 908 960
Screw for fixing stay-arm
bearing and corner bearing
from a sash weight of 100 kg
Please order separately!

For basic fittings
Z 995 663 / 664
from a sash weight of **100 kg**
2 each required



B Z 994 158
Additional vertical lock,
required from a sash height of 1400 mm



C Z 994 159
Additional horizontal lock,
required from a sash width of 1400 mm

Z 912 283
Assembly aid for
stay-arm installation



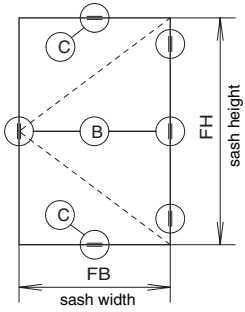
Possible adjustment
0.6 mm to the left or right

Z 912 287
Insert sleeve for lateral sash
adjustment, to be used with
corner bearings **Z 994 253 / 254**

Z 904 943
Strike plate, adjustable,
can be used optional to **Z 911 600**

Please observe the application diagrams!

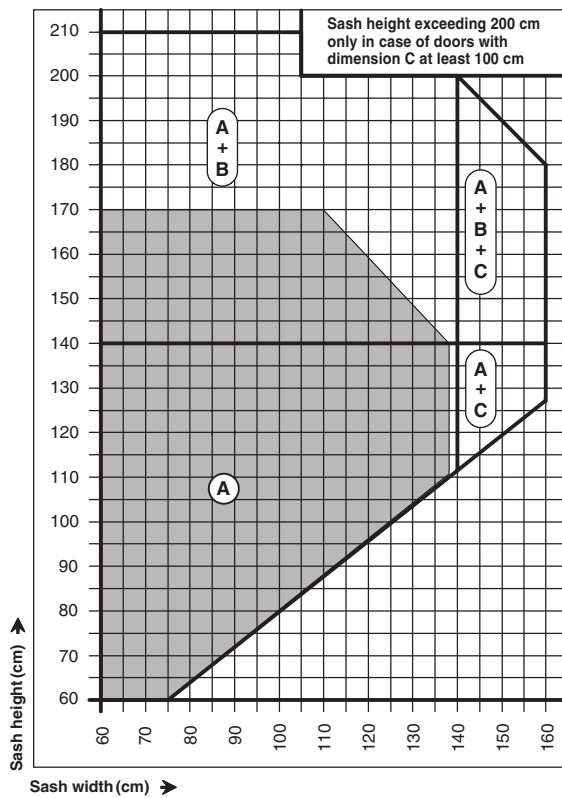
1.0	1.0 IF	A 72	List of fittings	DIN left	DIN right			
•	•	•	A	400 mm stay-arm hinge				
			Designation	PU	Z 995 663 02 / 64	Z 995 664 02 / 64		
			1	400 mm stay-arm	20	Z 912 266		
			1	Stay-arm angle	20	Z 912 899 02 / 64	Z 912 900 02 / 64	
			1	Stay-arm bearing, clamp-on design	40	Z 994 251 02 / 64	Z 994 252 02 / 64	
			1	Corner bearing, complete	40	Z 994 253 02 / 64	Z 994 254 02 / 64	
			1	Corner hinge, complete	40	Z 993 383 02 / 64	Z 993 384 02 / 64	
			1	Lever catch	100	Z 904 758		
			2	Strike plate	200	Z 911 600		
			1	Stay-arm locking slide	100	Z 911 618		
			1	Lower ramp	100	Z 906 364		
			2	Locking slides	100	Z 904 803		
			1	Tilting bearing	100	Z 904 810		
			1	Clamp-on piece for operating rod	50	Z 906 751 02		
			1	Schraube St 4.8x19 DIN 7981	100	Z 900 467		
			Please order separately!					
			1	Handle with screws	20	Z 911 590 02 / 64 + Z 911 592 02 / 64		
			2	Screw ST 4.8x19 DIN 7504	200	Z 908 960		
			Please order additional locks separately in accordance with the relevant sash size!					
			B Vertical lock				Z 994 158	
consisting of:								
1	Strike plate	200	Z 911 600					
1	Roller spigot	100	Z 904 934					
1	Roll for roller spigot	100	Z 904 986					
1	Locking part fixed frame	50	Z 905 105					
1	Locking part sash	50	Z 905 106					
C Horizontal lock				Z 994 159				
consisting of:								
2	Locking slide	100	Z 904 791					
2	Strike plate	200	Z 911 600					
2	Corner linkage gear	100	Z 908 962					
1	Securing transmission corner piece	100	Z 908 974					
<p>With masonry reveals and inward-projecting mullion profiles install a stay-arm opening limiter (see Accessories).</p> <p>Templates and punching tools: see Auxiliary accessories and tools (HW)</p> <p>For special paint please note the delivery time!</p>								



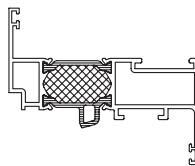
Application and sash size diagrams for side-hung sash fittings with stay-arm hinge of HUECK Series 1.0

Valid for a sash weight of 125 kg and an insert element weight up to 35 kg/m² for fittings Z 995 663/664 02/64

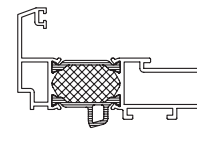
With heavier insert element weights, the sash sizes must be reduced in accordance with the diagrams for glass inserts.



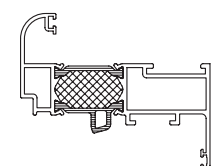
■ B 510 200



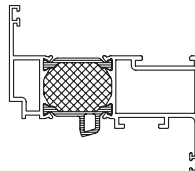
■ B 510 240



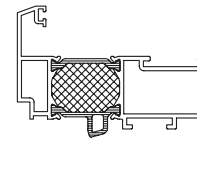
■ B 510 230



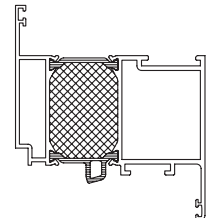
□ B 510 201



□ B 510 241



□ B 510 202



Max. installation height 100 m

Max. window sash size 2.88 m²

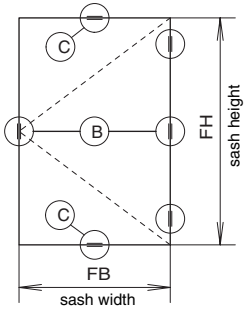
Max. door sash size 2.20 m²

Max. sash width 1600 mm

Sash width must not exceed 125% of sash height

Profile selection in accordance with application diagram (■)

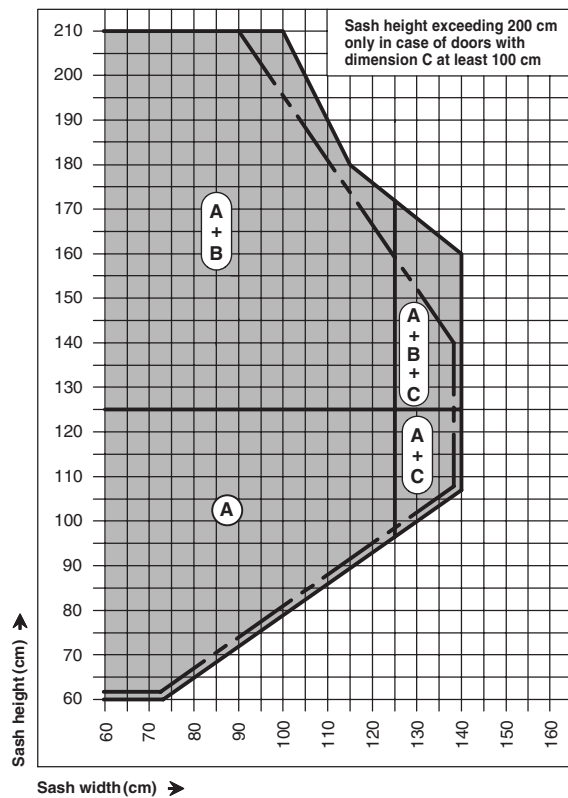
Selection of fittings in accordance with application diagram (—)



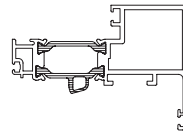
Application and sash size diagrams for side-hung sash fittings with stay-arm hinge of HUECK Series 1.0IF

Valid for a sash weight of 100 kg and an insert element weight of up to: _____ 30 kg/m²
 _____ 35 kg/m²

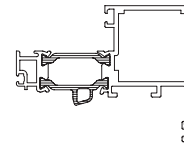
For fittings Z 995 663/664 02/64



■ B 510 270



■ B 510 271



Max. installation height 100 m

Max. window sash size 2.24 m²

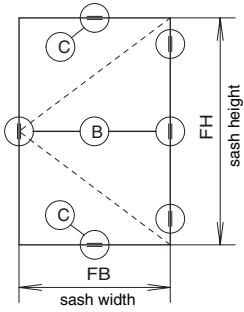
Max. door sash size 2.10 m²

Max. sash width 1400 mm

Sash width must not exceed 125% of sash height

Profile selection in accordance with application diagram (■)

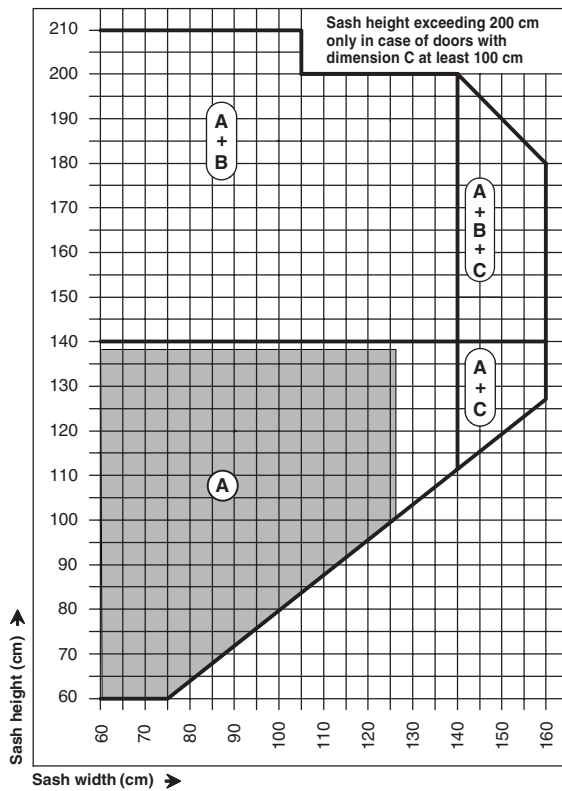
Selection of fittings in accordance with application diagram (—)



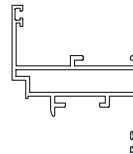
Application and sash size diagrams for side-hung sash fittings with stay-arm hinge of HUECK Series A72

Valid for a sash weight of 125 kg and an insert element weight up to 35 kg/m² for fittings Z 995 663/664 02/64

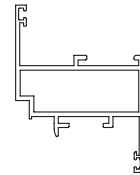
With heavier insert element weights, the sash sizes must be reduced in accordance with the diagrams for glass inserts.



■ P 572 210



□ P 572 211



Max. installation height 100 m

Max. window sash size 2.88 m²

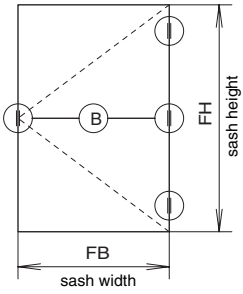
Max. door sash size 2.20 m²

Max. sash width 1600 mm

Sash width must not exceed 125% of sash height

Profile selection in accordance with application diagram (■)

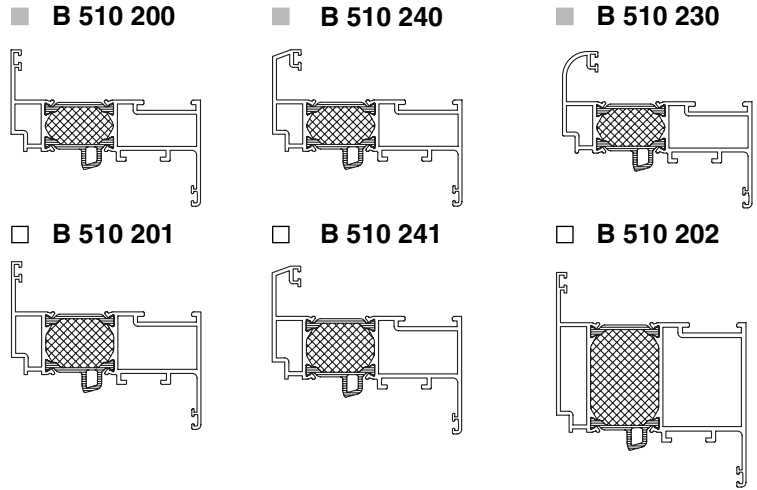
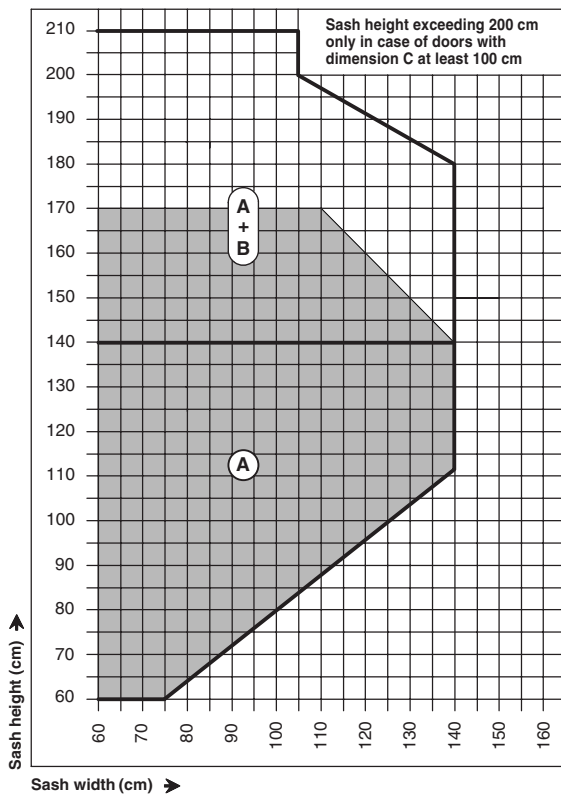
Selection of fittings in accordance with application diagram (—)



Application and sash size diagrams for side-hung sash fittings of HUECK Series 1.0

Valid for a sash weight of 80 kg and an insert element weight up to 30 kg/m² for fittings Z 995 626/627 02/64

With heavier insert element weights, the sash sizes must be reduced in accordance with the diagrams for glass inserts.



Max. installation height 100 m

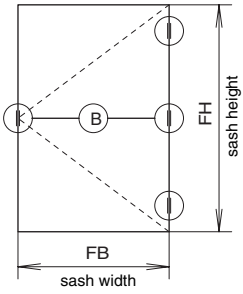
Max. window sash size 2.52 m²

Max. sash width 1400 mm

Sash width must not exceed 125% of sash height

Profile selection in accordance with application diagram (■)

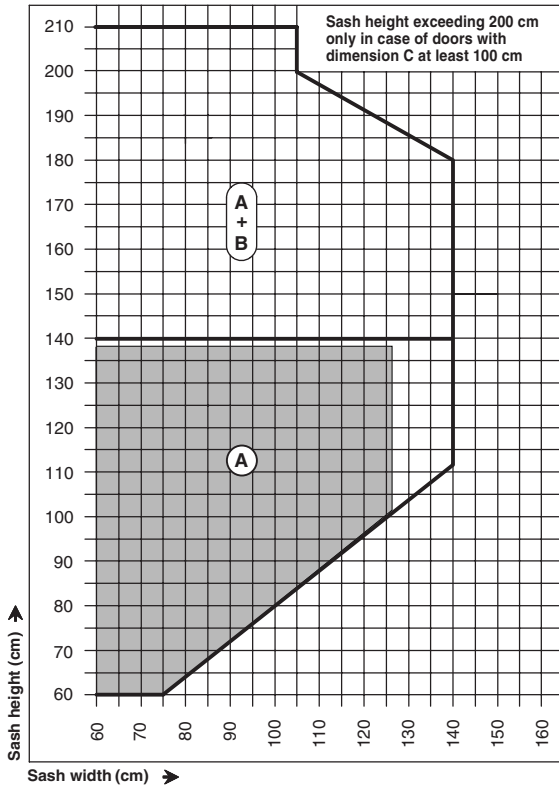
Selection of fittings in accordance with application diagram (—)



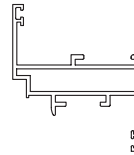
Application and sash size diagrams for side-hung sash fittings of HUECK Series A 72

Valid for a sash weight of 80 kg and an insert element weight up to 30 kg/m² for fittings Z 995 626/627 02/64

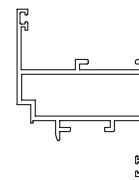
With heavier insert element weights, the sash sizes must be reduced in accordance with the diagrams for glass inserts.



■ P 572 210



□ P 572 211



Max. installation height 100 m

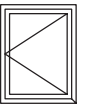
Max. window sash size 2.52 m²

Max. sash width 1400 mm

Sash width must not exceed 125% of sash height

Profile selection in accordance with application diagram (■)

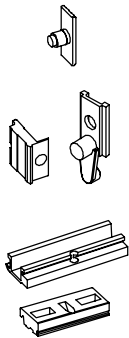
Selection of fittings in accordance with application diagram (—)



**Accessories for concealed side-hung sash fittings,
excluding operating rods P 496 099
Processing drawing: Register 200**

**Accessories for fixed sashes
Processing drawing: Register 200**

Attention!
Cutting for sash width ≤ 700 mm:
FB = LRB + 8 mm

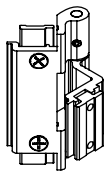


**Locking set,
without handle**

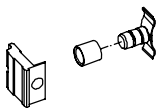
Z 994 083
including ramp set

**Locking set,
without window handle**

Z 994 084
including rebate gear
and ramp set



Z 993 419 02
Z 993 419 64
Side-hung sash hinge,
clamp-on design,
three-part, suitable for
DIN L and DIN R,
can be used as
a centre hinge



Z 994 158
Additional vertical lock,
required from a
sash width of 1400 mm

Please observe the application diagrams!

With masonry reveals and inward-projecting
mullion profiles install a stay-arm opening
limiter (see Accessories).

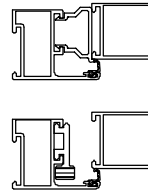
Templates and punching tools:
see Auxiliary accessories and tools (HW)

For special paint please note the delivery time!

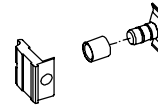
Series

	1.0	1.0 IF	A 72
Z 994 083	•	•	•
Z 994 084	•	•	•
Z 993 419 02 Z 993 419 64	•	•	•
Z 994 158	•	•	•

Attention!
Cutting for sash width ≤ 700 mm:
FB = LRB + 8 mm



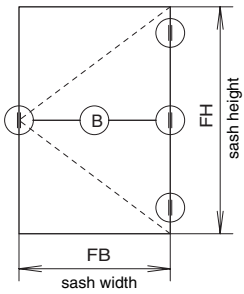
Z 994 163
Accessories for
fixed sashes



Z 994 162
Additional vertical lock,
required from a sash
width of 1400 mm ,
to be used in combination
with centre hinge
Z 993 419

Series

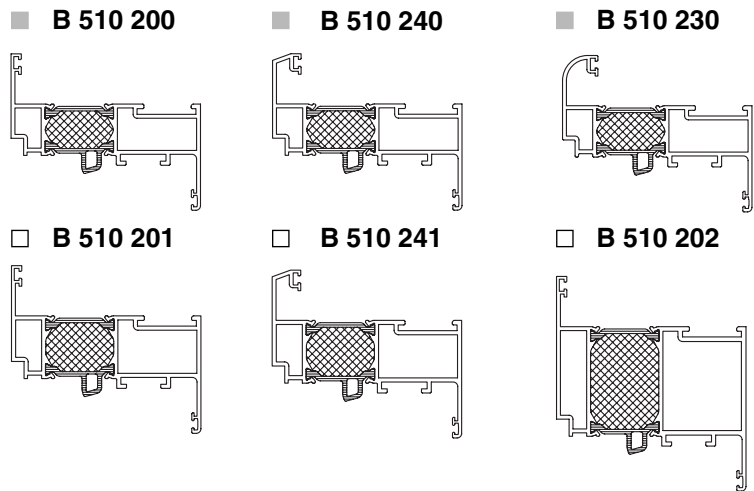
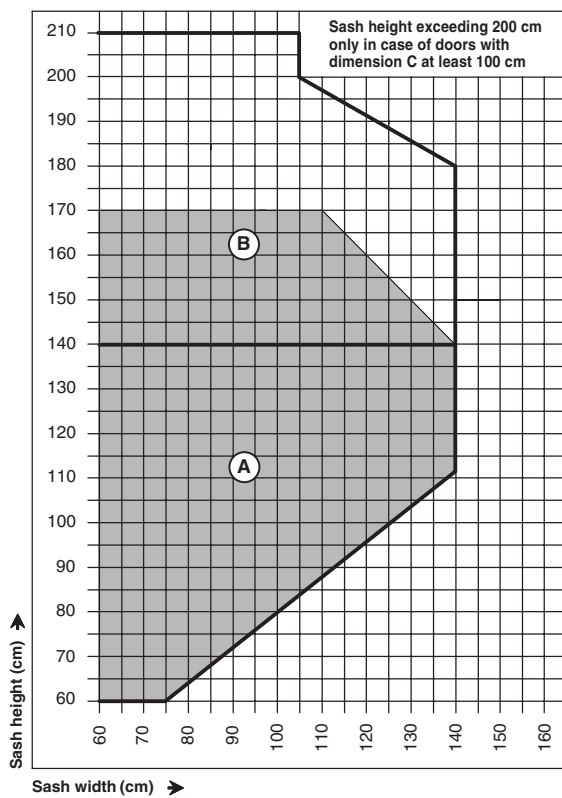
	1.0	1.0 IF	A 72
Z 994 163	•	•	•
Z 994 162	•	•	•



Application and sash size diagrams for side-hung sash fittings consisting of hinge and lock sets of HUECK Series 1.0

Valid for a sash weight of 80 kg and an insert element weight of up to 30 kg/m²

With heavier insert element weights, the sash sizes must be reduced in accordance with the diagrams for glass inserts.



Max. installation height 100 m

Max. window sash size 2.52 m²

Max. door sash size 2.20 m²

Max. sash width 1400 mm

Sash width must not exceed 125% of sash height

Profile selection in accordance with application diagram (■)

Selection of fittings in accordance with application diagram (—)

(A)

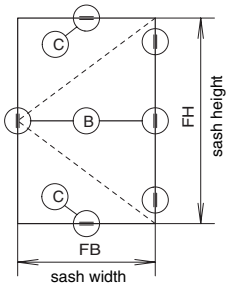
Locking set
+ 2 hinges

(B)

Locking set
+ 3 hinges
+ vertical lock
on lock side,
to be used in
combination with
centre hinge

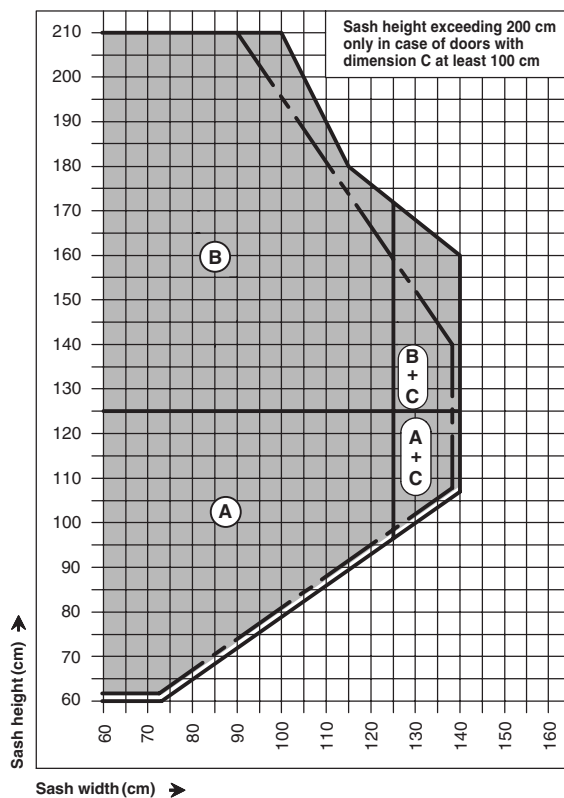
(B)

As an alternative:
Locking set
+ 2 hinges
+ vertical lock
(on both sides)

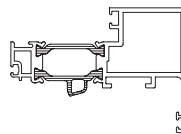


Application and sash size diagrams for side-hung sash fittings consisting of hinge and lock sets of HUECK Series 1.0IF

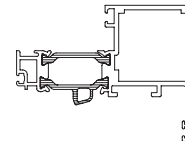
Valid for a sash weight of 80 kg and an insert element weight of up to: _____ 30 kg/m²
 _____ 35 kg/m²



■ B 510 270



■ B 510 271



Max. installation height 100 m

Max. window sash size 2.24 m²

Max. door sash size 2.10 m²

Max. sash width 1400 mm

Sash width must not exceed 125% of sash height

Profile selection in accordance with application diagram (■)

Selection of fittings in accordance with application diagram (—)

Ⓐ

Locking set
+ 2 hinges

Ⓑ

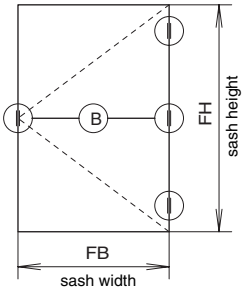
Locking set
+ 3 hinges
+ vertical lock
on lock side,
to be used in
combination with
centre hinge

Ⓑ

As an alternative:
Locking set
+ 2 hinges
+ vertical lock
(on both sides)

Ⓒ

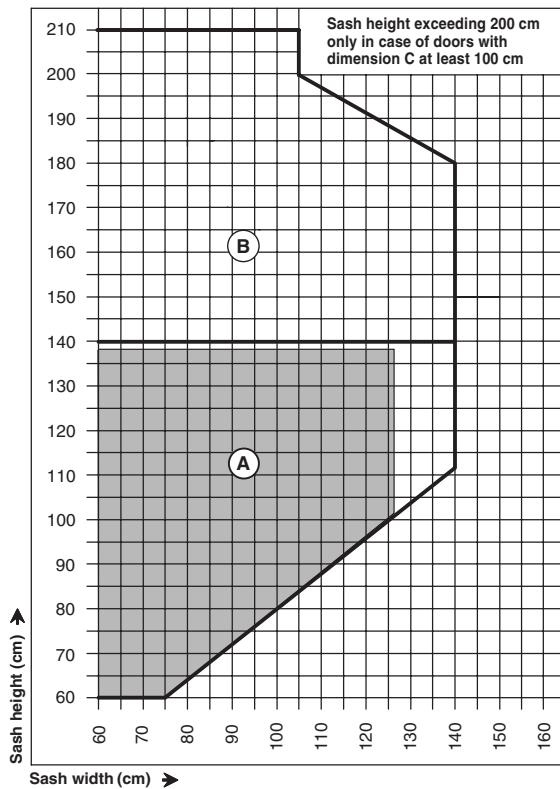
Additional horizontal lock,
obligatory in addition to
Ⓐ or Ⓑ from a sash width
of 1250 mm



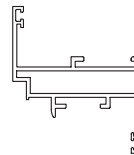
Application and sash size diagrams for side-hung sash fittings consisting of hinge and lock sets of HUECK Series A 72

Valid for a sash weight of 80 kg and an insert element weight of up to 30 kg/m²

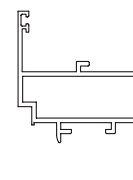
With heavier insert element weights, the sash sizes must be reduced in accordance with the diagrams for glass inserts.



■ P 572 210



□ P 572 211



Max. installation height 100 m

Max. window sash size 2.52 m²

Max. door sash size 2.20 m²

Max. sash width 1400 mm

Sash width must not exceed 125% of sash height

Profile selection in accordance with application diagram (■)

Selection of fittings in accordance with application diagram (—)

Ⓐ

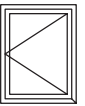
Locking set
+ 2 hinges

Ⓑ

Locking set
+ 3 hinges
+ vertical lock
on lock side,
to be used in
combination with
centre hinge

Ⓑ

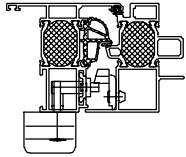
As an alternative:
Locking set
+ 2 hinges
+ vertical lock
(on both sides)



Accessories for side-hung outward-opening sashes, suitable for profiles B 510 114 and B 510 205
complete, excluding operating rods P 469 099
Processing drawing: Register 200

Series

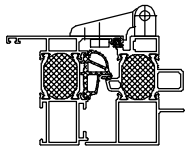
1.0



Locking set - complete

Z 994 133 02
Z 994 133 64
with handle and
catching piece

Z 994 145
Ramp set for side-hung sash,
1 required



Hinge set

Z 994 130 02
Z 994 130 64
Side-hung sash hinge,
suitable for DIN L and DIN R
or as a centre hinge

Z 994 139
Vertical lock on lock side,
to be used in combination
with centre hinge **Z 994 130**

Z 994 143
Drilling jig set
suitable for locking set

Z 911 542
Drilling jig for
hinges **Z 994 130**

Z 911 566
Glazing bridge for sashes
with 4 mm external gasket,
> see Chapter **Glazing**

Z 911 571
Glazing bridge for sashes
with 4 mm external gasket,
> see Chapter **Glazing**

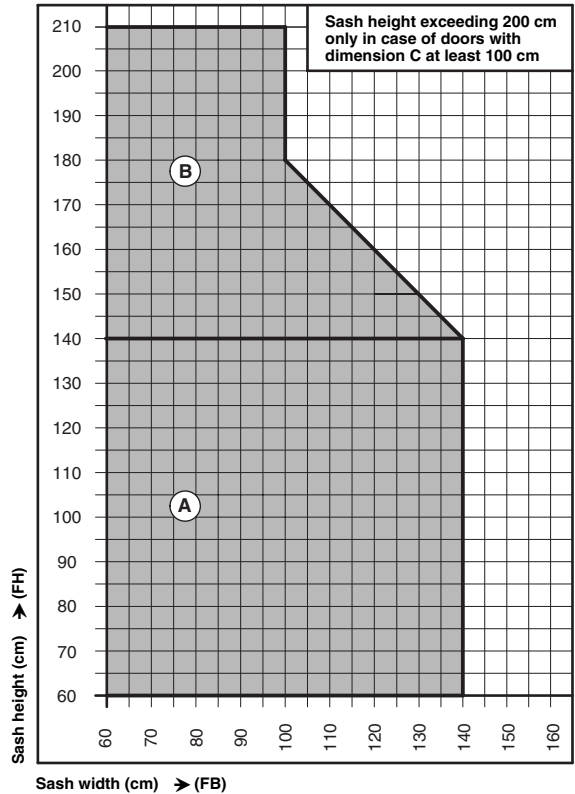
We recommend the use of limiting stay-bar
Z 994 140 for side-hung outward-opening sashes.

The opening size can be adjusted
and should not exceed 600 mm.

-> see **Accessories**

Application and sash size diagram for side-hung fittings, consisting of hinge and locking sets of HUECK Series 1.0

Valid for a sash weight of 80 kg and an
insert element weight of up to 30 kg/m²

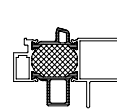


Max. window sash size 1.96 m² Max. door sash size 2.10 m²
Max. sash width 1400 mm
Sash width must not exceed 125% of sash height

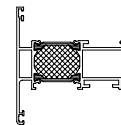
Ⓐ Locking set
+ 2 hinges

Ⓑ Locking set
+ 3 hinges
+ vertical lock
Z 994 139
on hinge side

B 510 114



B 510 205



Profile selection in accordance with application diagram (■)
Selection of fittings in accordance with application diagram (—)

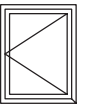
Please observe the application diagrams!

With masonry reveals and inward-projecting mullion
profiles install a stay-arm opening limiter (see **Accessories**).

VOB (German Standard Building Contract Terms)
DIN 18360 make it obligatory to install safety devices to
prevent false operation.

Templates and punching tools:
see **Auxiliary accessories and tools (HW)**

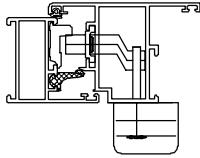
For special paint please note the delivery time!



Accessories for side-hung outward-opening sashes, suitable for profile P 572 205, without operating rods P 496 099
Processing drawing: Register 200

Series

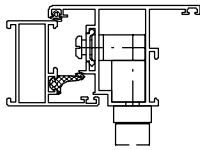
A 72



Locking set - complete

Z 992 610 02
Z 992 610 64

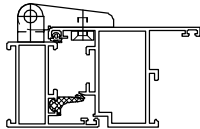
with handle and
catching piece



Locking set - complete

Z 992 834 02

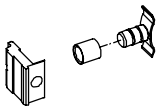
with pivoting sash gear
and handle



**Hinge set,
suitable for locking sets**

Z 992 594 02
Z 992 594 64

Hinge, suitable for
DIN L and DIN R
or as a centre hinge



Z 994 162

Additional vertical lock,
to be used in combination
with centre hinge

Z 907 291

Drilling jig, suitable for
locking sets **Z 992 610**
and **Z 992 834**

Z 907 253

Drilling jig for side-hung
sash hinges **Z 992 594**

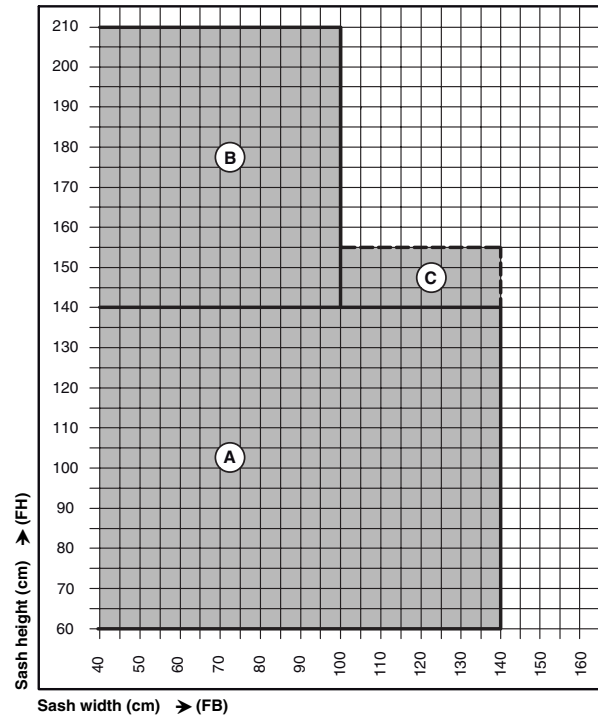
We recommend the use of limiting stay-bar
Z 992 547 for side-hung outward-opening sashes.

The opening size can be adjusted
and should not exceed 600 mm.

-> see **Accessories**

Application and sash size diagram for side-hung fittings, consisting of hinge and locking sets of HUECK Series 1.0

Valid for a sash weight of 80 kg and an
insert element weight of up to 30 kg/m²



Max. window sash size 1.96 m² Max. door sash size 2.10 m²

Max. sash width 1400 mm

Sash width must not exceed 125% of sash height

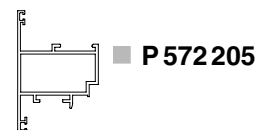
Ⓐ Locking set
+ 2 hinges

Ⓑ Locking set
+ 3 hinges
+ lock-side vertical lock

Ⓒ Escape window only
Fittings as for Ⓑ

Profile selection in accordance with application diagram (■)

Selection of fittings in accordance with application diagram (—)



Please observe the application diagrams!

With masonry reveals and inward-projecting mullion
profiles install a stay-arm opening limiter (see Accessories).

Templates and punching tools:
see Auxiliary accessories and tools (HW)

For special paint please note the delivery time!