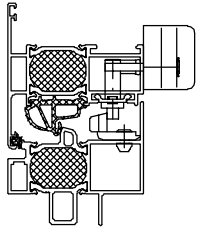


Fitting for top-hung projecting out windows, concealed for sashes in parapet height, excluding operating rods P 496 099, suitable for profiles B 510 114 and B 510 205
Processing drawing: Register 400

Series

1.0



Locking set, complete

Z 994 133 02
Z 994 133 64

with handle and catching piece

Z 994 132

Stay-arm set for top-hung projecting out windows, for sash heights between 500 and 900 mm, max. opening width 25°

Z 994 131

Stay-arm set for top-hung projecting out windows, for sash heights between 901 and 1800 mm, max. opening width 15°

Locking set, complete

Z 993 056 02 DIN L
Z 993 056 64 DIN L

Z 993 058 02 DIN R
Z 993 058 64 DIN R

including roller lock, can be used as an alternative to **Z 994 133**

Application:

for sash widths up to 800 mm
1 each of DIN L or DIN R
for sash widths between 801 and 1400 mm
1 DIN L and 1 DIN R

Z 994 143

Set of drilling jigs, suitable for the locking set

Z 994 141

Set of drilling jigs for stay-arm sets

Z 911 566

Z 911 571

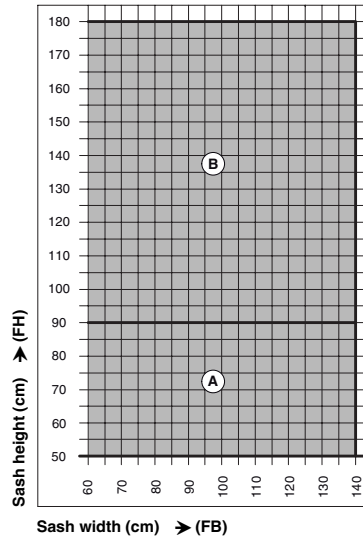
Glazing bridges, cf. Chapter: **Glazing**

Drilling jigs:

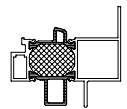
-> cf. **Auxiliary accessories and tools**

Application and sash size diagrams for fittings for top-hung projecting out windows

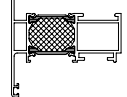
Valid for a sash weight of 80 kg and an insert element weight of up to 30 kg/m².



B 510 114



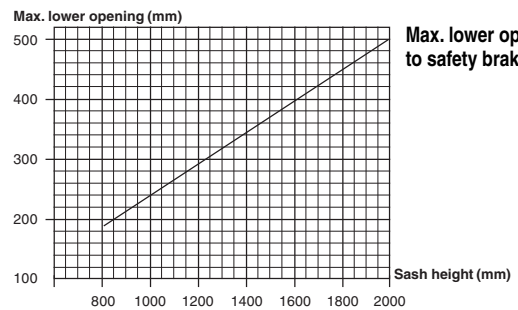
B 510 205



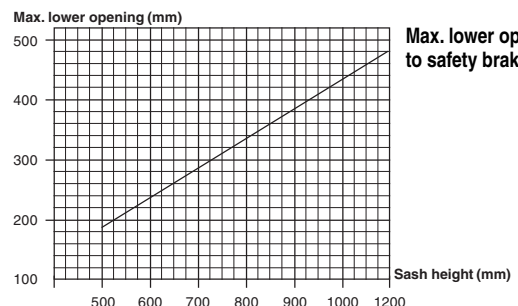
A Locking set + stay-arm set
Z 994 132

B Locking set + stay-arm set
Z 994 132

Selection of fittings in accordance with application diagram Max. window sash size 2.52 m²



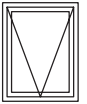
Max. lower opening up to safety brake at 15°



Max. lower opening up to safety brake at 25°

The lower opening line depends on the fixed frames and sash profiles; the line represented above was calculated on the basis of the pictorial schematic of profiles with a 16 mm rebate width.

Please observe the application diagrams!



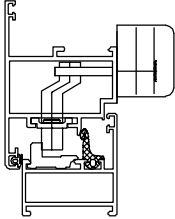
Fitting for top-hung projecting out windows, concealed for sashes in parapet height,
excluding operating rods P 496 099, suitable for profile B 572 205
Processing drawing: Register 400

Series

A 72

Z 993 060

Stay-arm set for top-hung projecting out windows, for sash heights between 700 and 1500 mm, max. opening width 600 mm



Locking set, complete

Z 993 062 02

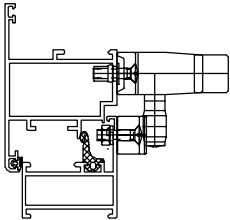
with handle and catching piece

Locking set, complete

Z 993 056 02 DIN L Z 993 056 64 DIN L

Z 993 058 02 DIN R Z 993 058 64 DIN R

including roller lock, can be used as an alternative to Z 993 062



Application:

for sash widths up to 800 mm
1 each of DIN L or DIN R
for sash widths between 801 and 1400 mm
1 DIN L and 1 DIN R

Z 992 694

Stay-arm, for bottom-hung sashes, suitable for projecting out sashes, adjustable opening width, stay-arm can be unhinged on the sash side in the open position, required for sash heights from 900 mm - 1200 mm

Z 992 547

Limiting stay-arm, with friction control, adjustable opening width, suitable for side-hung and turn-tilt windows, for projecting out sash, required for sash heights from 1200 mm - 1500 mm

Application ranges for fittings for top-hung projecting out windows

Max.	window sash size	1.9 m ²
Max.	sash height	1500 mm
Max.	sash width	1250 mm
Min.	sash height	700 mm
Max.	sash weight	55 kg

Attention!

In case of top-hung projecting out windows, the opening width must not exceed 600 mm.

In case of sash heights of 700 - 900 mm, the opening width of 600 mm is not exceeded. A screw (Z 901 164) can be screwed into the fixed frame in order to restrict the sash width.

The following opening limiters are suitable alternatives:

1. Z 992 694 sash height from 900 – 1200 mm
2. Z 992 547 sash height from 1200 – 1500 mm

Drilling jigs:
-> cf. Auxiliary accessories and tools

Please observe the application diagrams!