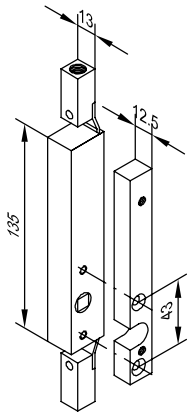


Door-Series

Door-Series



Fittings and accessories for rebate swing doors, swing doors, double action doors

Z 991 782
Bascule flush bolt excluding front plate, with 8 mm square pin, operation with pin key from rebate, bolt ends with 10 mm inner thread, complete including base and fixing screws

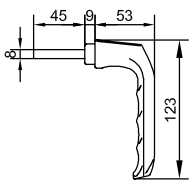
Please order operating rod separately!



Z 912 512
3 mm base, required in addition when using bascule flush bolt Z 991 782 for Series **A 72**

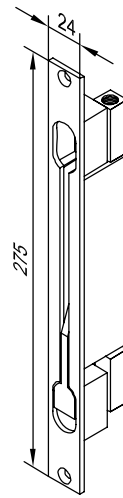


Z 908 543
Operating rod, diam. 10 mm, galvanized steel, M10 thread at one end, Length = 1500 mm
2 required



Z 911 758 64
Square key, suitable for flush bolt Z 991 782

1.0	A 72
•	•
	•
•	•
•	•

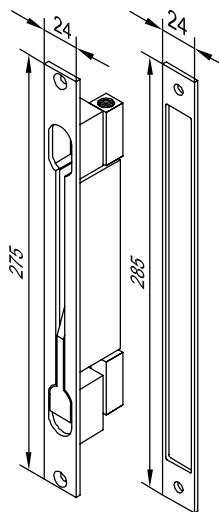


Flush bolts and espagnolette bolts for two-sash doors

Z 994 018
Flush bolt, effective on both sides, 35 mm backset, galvanized, with lever for top-hung window, M10 inner thread on rod ends, 20 mm stroke,

Please order operating rod separately!

Z 908 543
Operating rod, diam. 10 mm, galvanized steel, M10 thread at one end, Length = 1500 mm
2 required



Z 994 018
Flush bolt, effective on both sides, 35 mm backset, galvanized, with lever for top-hung window, M10 inner thread on rod ends, 20 mm stroke,

Please order operating rod separately!

Z 912 707
Additional base for flush bolt Z 994 018 required for Series **RSC**

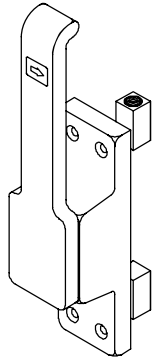
Z 912 707
Please order separately!

Z 908 543
Operating rod, diam. 10 mm, galvanized steel, M10 thread at one end, Length = 1500 mm
2 required

1.0	RSC without RS	A 72
•		•
	•	
•		•
	•	
	•	

Door-Series

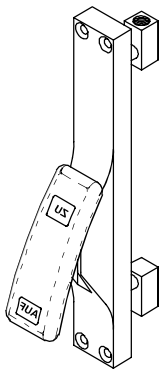
1.0	RSC without RS	A 72
•	•	•
•	•	•
•	•	•
•	•	•
•	•	•
•	•	•
•	•	•



Z 992 816 02
Z 992 816 64
Turning espagnolette bolt,
for left turn,
with M10 inner thread
for operating rod

Z 992 818 02
Z 992 818 64
Turning espagnolette bolt,
for right turn,
with M10 inner thread
for operating rod

**Please order operating rod
separately!**



Z 990 865 02
Z 990 865 64
Espagnolette bolt with
rocker arm,
with M10 inner thread
for operating rod

**Please order operating
rod separately!**



Z 908 543
Operating rod,
diam. 10 mm,
galvanized steel,
M10 thread at one end,
Length = 1500 mm
2 required



Z 900 281
Aluminium operating rod,
diam. 10 mm,
Length = 6000 mm,
suitable for espagnolette
bolt and flush bolt,
applicable as option
for Z 908 543

Door-Series

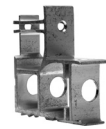
1.0	RSC without RS	A 72
•	•	•
•	•	•
•	•	•
•	•	•
•	•	•
•	•	•
•	•	•
•	•	•



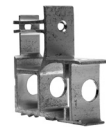
Z 993 438
Coupling piece for the
operating rods if an electric
opener is used at 1050 mm
in the inactive sash,
in combination with the
rebate espagnolette bolt or
the ECO dual locking system,
suitable for operating rods
diameter 10 mm

Attention!
Bevel operating rod for
clamping screw

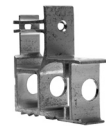
Attention!
For the operating rods processed
corner brackets are required ->
Please order separately:



Z 912 167
Corner bracket,
nailable only,
processed for operating rod,
for profiles **B 521250 / 251**



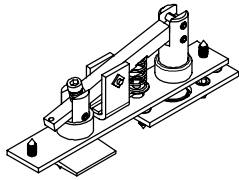
Z 912 168
Corner bracket,
nailable only,
processed for operating rod,
for profiles **B 521252 / 253**



Z 912 169
Corner bracket,
nailable only,
processed for operating rod,
for profiles **B 572260 / 261**

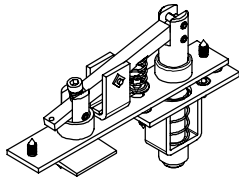
Fittings and accessories for doors opening in and out, excluding operating rods
Processing and assembling drawing: Register 700

ECO dual catch for doors opening in



Z 994 631
ECO dual catch
System I, designated
for upper locking only

Z 994 641
ECO dual catch
System I, designated
for upper locking only



Z 994 632
ECO dual catch
System II, for
automatic upper and
bottom locking of the
inactive sash via the
active sash

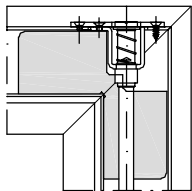
Z 998 012
ECO dual catch
System II, for
automatic upper and
bottom locking of the
inactive sash via the
active sash



Z 909 417
Operating rod (tube),
diamater 10 mm,
Length = 2500 mm,
suitable for dual catch
System II

Attention!

For dual catch **System I** and **II**
processed corner brackets are required ->
Please order separately:



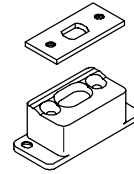
Z 994 076
Corner bracket,
nailable only,
processed for
ECO dual catch

Z 912 323
Corner bracket,
nailable only,
processed for
ECO dual catch

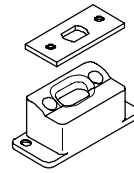
Door-Series

1.0	RSC without RS	A 72
•		•
	•	
•		•
	•	
•	•	•
•		
		•
		•

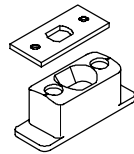
Locking parts for locking with operating rods



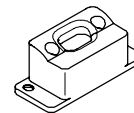
Z 994 019 02
Upper and lower locking part
for doors opening **in**
with espagnolette bolt,
can be inserted into thresholds
B 521665 / P421667 /
K 910 080



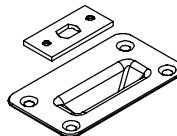
Z 994 020 02
Upper and lower locking part
for doors opening **out**
with espagnolette bolt,
can be inserted into thresholds
B 521665 / P421667 /
K 910 080



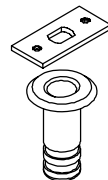
Z 993 053
Upper and lower locking part
for doors opening **in and out**
with espagnolette bolt,
can be inserted into threshold
B 572684



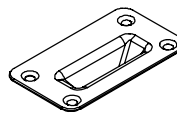
Z 998 004
Lower locking part
for doors opening **in and out**
with espagnolette bolt,
can be inserted into threshold
B 531603



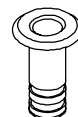
Z 993 154
Upper and lower locking part
for doors opening **in and out**
with espagnolette bolt,
for continuous floor



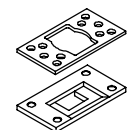
Z 994 060
Upper locking part and
ground sleeve for
doors opening **in and out**
with espagnolette bolt



Z 993 496
Guide piece for
door flush bolts with 4 screws
for two-sash doors when
using ECO dual catch



Z 913 082
Ground sleeve,
can be used as option to
guide piece for door flush bolts



Z 998 093
Strike plate for inactive sash,
to be used in combination with
guide piece for door flush bolts

Door-Series

1.0	RSC without RS	A 72
•		
•		
		•
	•	
•		
		•
		•
	•	
		•
	•	