

10 Fixing the pressure plate profiles

The pressure plate profiles must be screwed on with a clearance of 255 mm, starting and ending with a clearance of 62.5 mm. In the corner and polygonal area all pressure plate profiles must be screwed on with clearances in accordance with the static requirements.

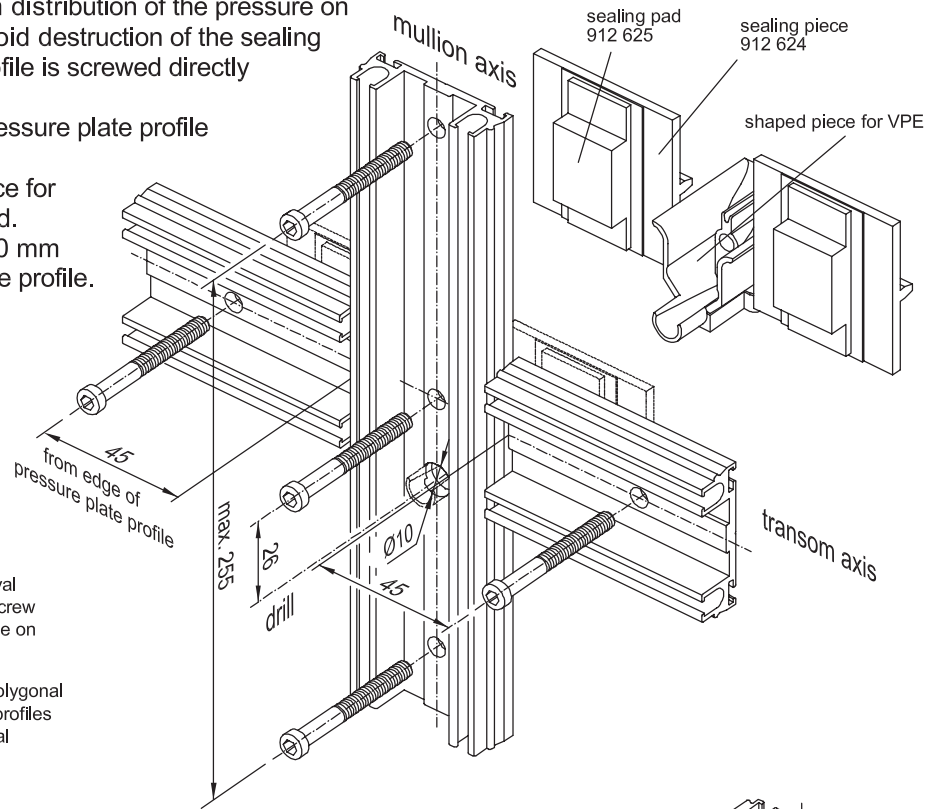
10.1 Pressure plate profile for individual pressure plate glazing gasket and snap in cover profiles

In order to achieve a uniform distribution of the pressure on the sealing pieces and to avoid destruction of the sealing piece, the pressure plate profile is screwed directly behind the sealing piece.

Fasten the screws for the pressure plate profile up to 4.5 Nm.

If necessary, the shaped piece for field-by-field ventilation is used.

This requires a drilling with 10 mm diameter in the pressure plate profile.



10.2 Pressure plate profile with visible screw fixing

The pressure plate profiles are drilled with a multi-step drill (diam. 10 mm / 6 mm) according to the dimension sketch.

When determining the drilling distances make sure that screwing is possible on the level of the transom axis.

Field-by-field drainage is used if necessary; this requires drilling with a diameter of 10 mm to enable drainage of the condensate collected in the pressure plate profile.

Fasten the screws of the pressure plate profiles up to 4.5 Nm.

Drill the transom's pressure plate profiles analogously.

