

4.2 Drilling holes for fixing the t-brackets without offset

Position and fix drilling jig 912 666 at the marking of the transom axis. In case of this connection, the transom is always positioned flush to the transom, and no change of gasket is required for the internal glazing gasket.

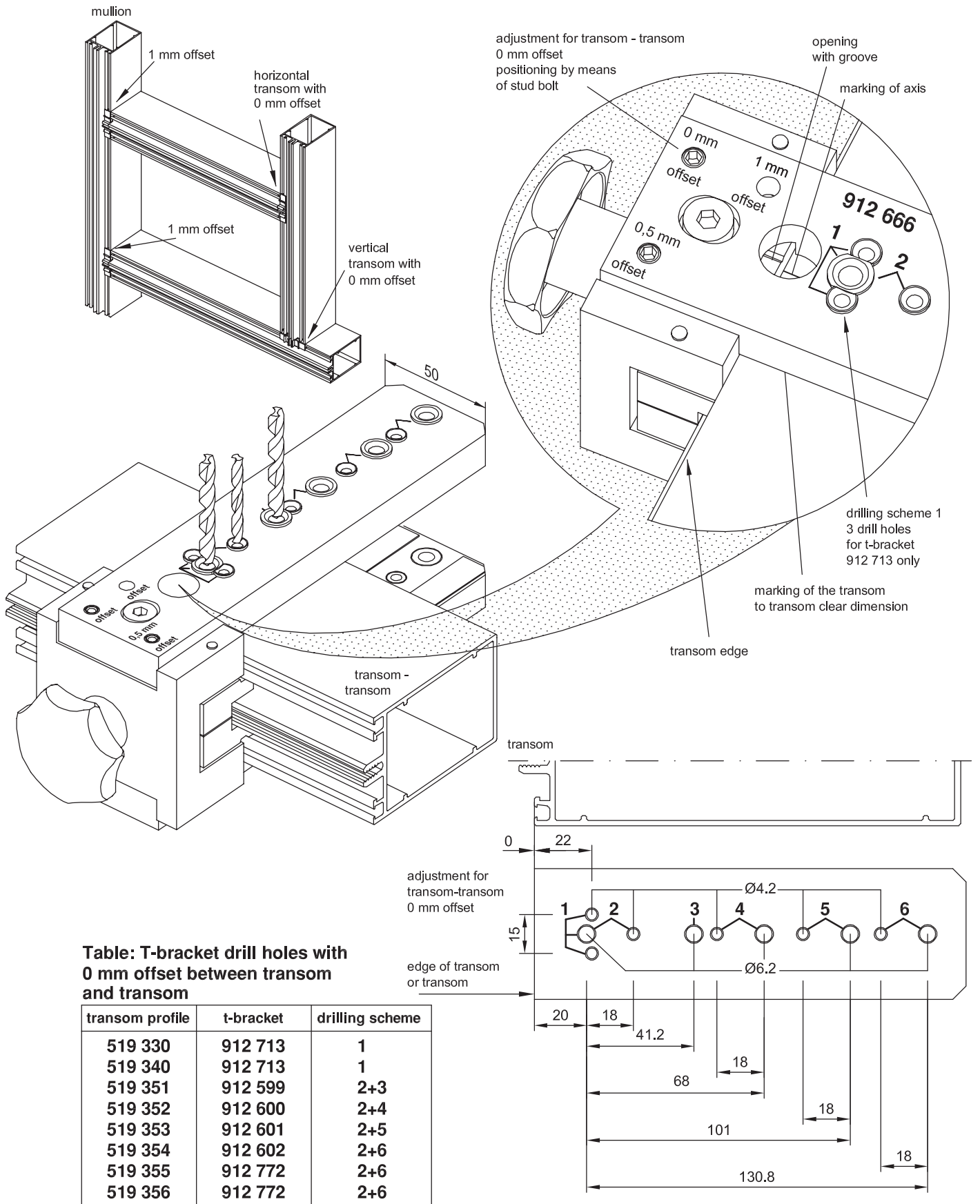


Table: T-bracket drill holes with 0 mm offset between transom and transom

transom profile	t-bracket	drilling scheme
519 330	912 713	1
519 340	912 713	1
519 351	912 599	2+3
519 352	912 600	2+4
519 353	912 601	2+5
519 354	912 602	2+6
519 355	912 772	2+6
519 356	912 772	2+6

4.3 Mullion drillings for fixing T-bracket with spring pin

Position and fix drilling jig 912 778 at the marking of the mullion's axis and clamp.
In case of standard connections, the transom is always positioned 1 mm in front of the mullion, and no change of gasket is required for the internal glazing gasket.

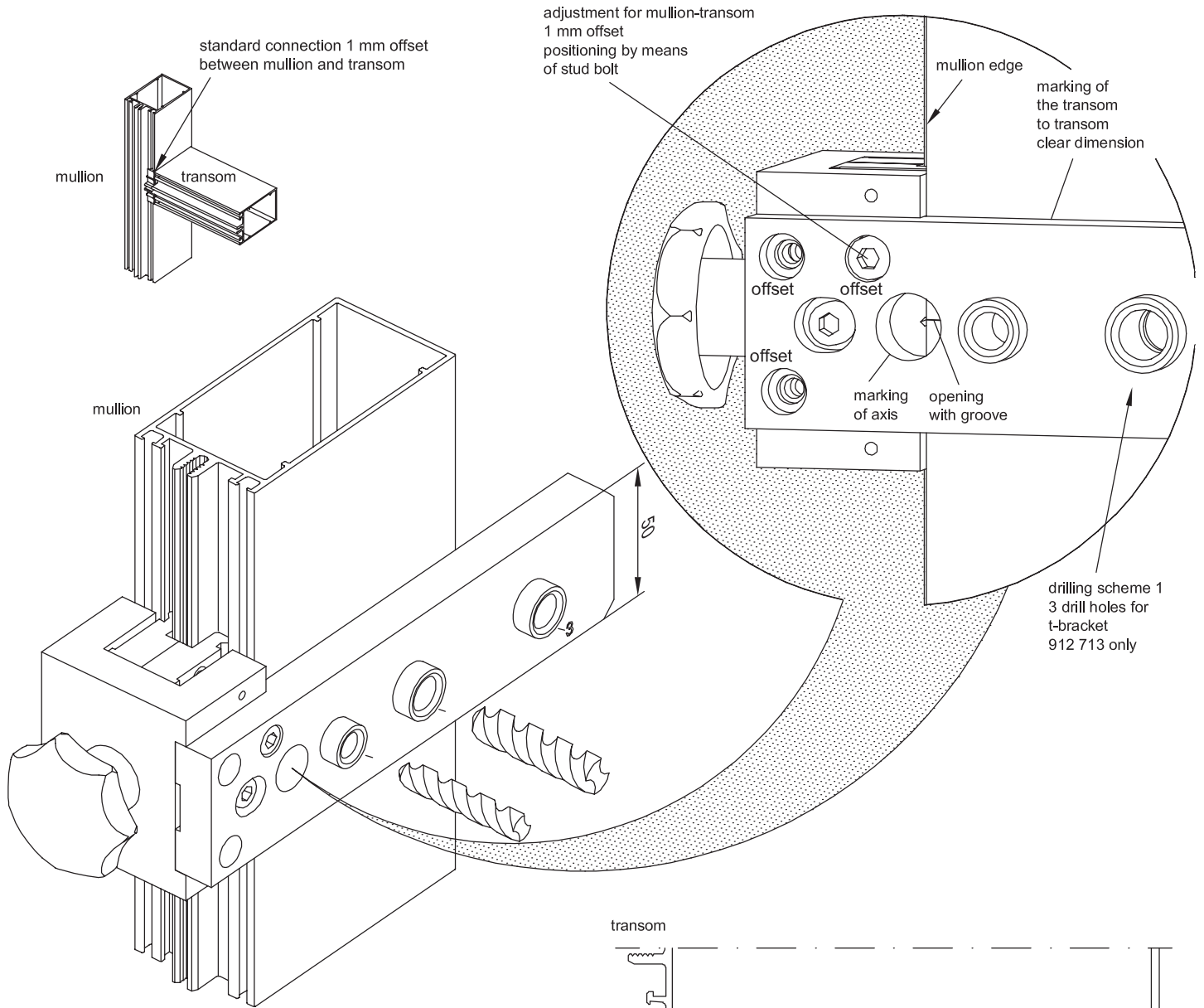


Table: T-bracket drill holes with 1 mm offset between mullion and transom

transom profile	t-bracket	drilling scheme
519 351	994 670	1+2
519 352	994 671	1+2
519 353	994 672	1+3
519 354	994 673	1+3
519 355	994 692	1+3
519 356	994 692	1+3

