

## 12 Fixing the pressure plate profiles

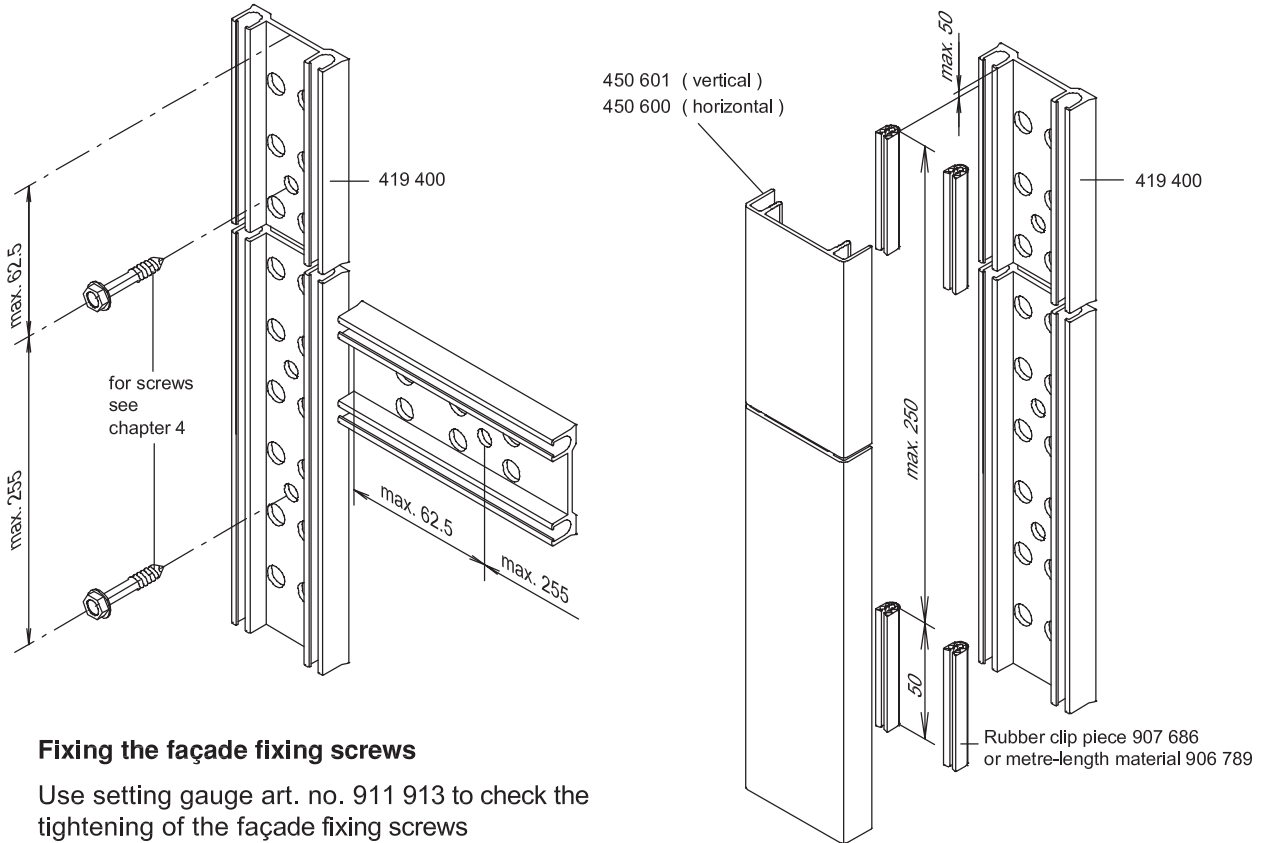
The pressure plate profiles 419 400 >423 400< have to be screwed at intervals of 255 mm, starting and ending with an interval of 62.5 mm.

Distance between screws for corner or polygonal mullions connecting pressure to mullion profiles has to be in accordance with the structural calculation.

### 12.1 Rubber clip piece for fixing the cover caps

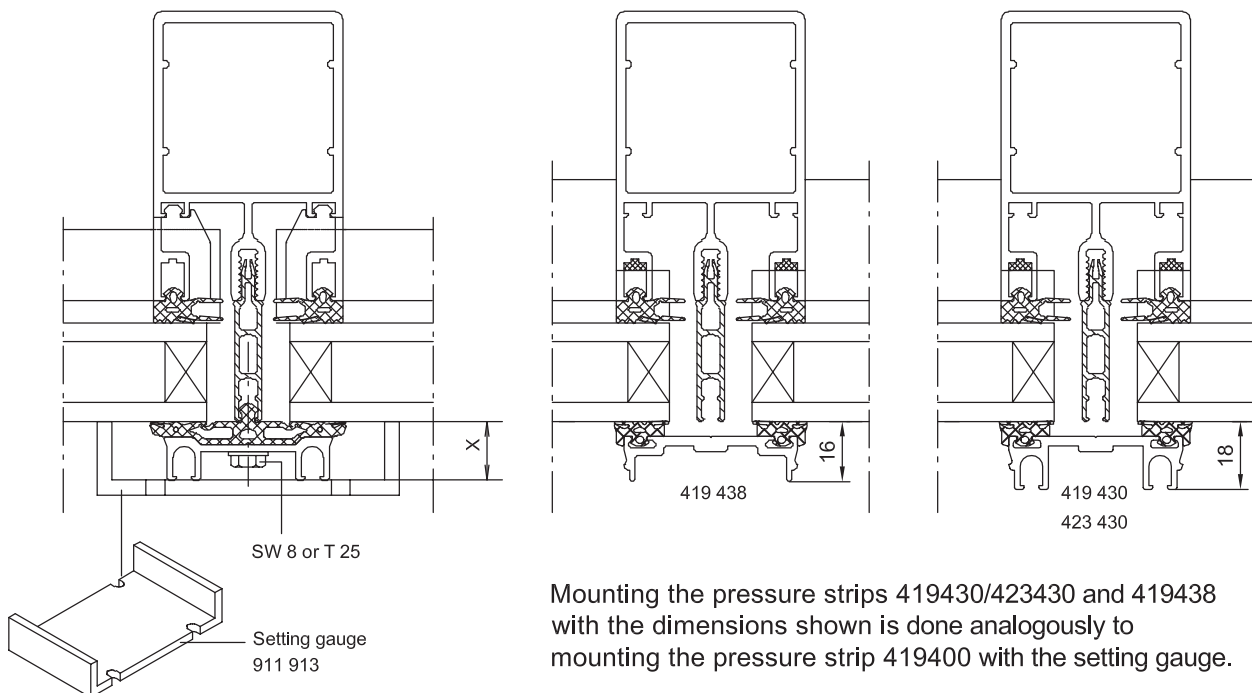
The rubber clip piece 907 686 (50 mm sections) or metre-length material 906 789 has to be installed in pairs at least every 250 mm.

**Attention! Check the correct placement of the pressure plate profile after assembling.**



### 12.2 Fixing the façade fixing screws

Use setting gauge art. no. 911 913 to check the tightening of the façade fixing screws (up to 4.5 Nm). Dimension x = 15.5 mm. See figure 12.3 and 12.4.



Mounting the pressure strips 419430/423430 and 419438 with the dimensions shown is done analogously to mounting the pressure strip 419400 with the setting gauge.

## 12.3 Expansion joint plates for cover profiles

cover profiles	expansion joint plate, art. no.	pressure plate profiles
450 600 >460 600<	908 529 >906 855<	419 400 >423 400<
450 601 >460 601<	908 530 >906 856<	419 400 >423 400<
460 606 423 606 423 607 423 610	906 982 911 920 911 921 911 922	419 405 419 406 419 407 419 410

table for figure 12.5

The profile joint of the pressure plate profile has to be positioned at the level of the mullion joint. Fix the expansion joint plate into the pressure plate profile by means of glue and match it in colour if necessary.  
The joint of the cover profiles should be staggered up to max. 250 mm with regard to the pressure plate profile joint.

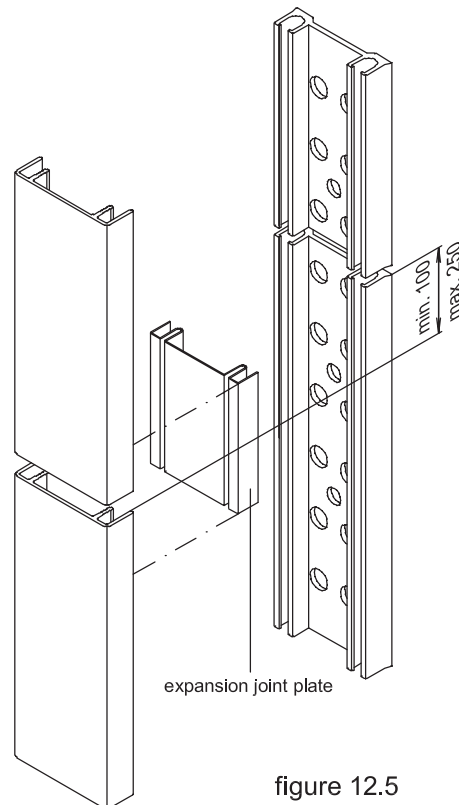


figure 12.5

## 12.4 Processing the pressure plate profiles

### 12.4.1 Pressure plate profiles for polygonal mullions

The fixing drillings (diam. 7 mm) as well as the vapour pressure equalization holes (diam. 8.5 mm) have to be drilled into the pressure plate profiles. For dimension sketch see figure 12.6. The suitable drilling jig is art. no. 911 816.

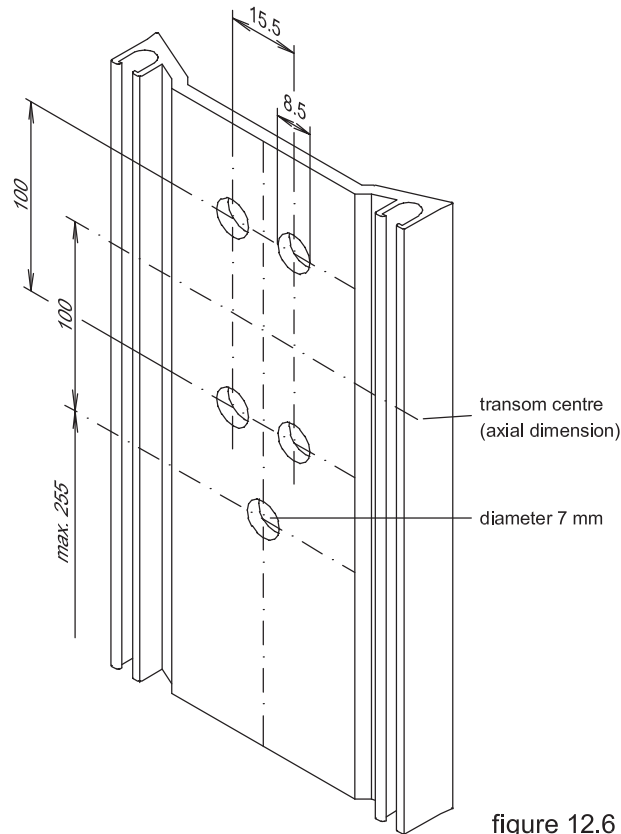


figure 12.6

### 12.4.2 Pressure plate profiles without cover profiles

These pressure plate profiles are fixed by means of hexagon sockets and should be drilled with a multi-step drill (diam. 10 mm + diam. 6 mm) according to the dimension sketch (figure 12.7).

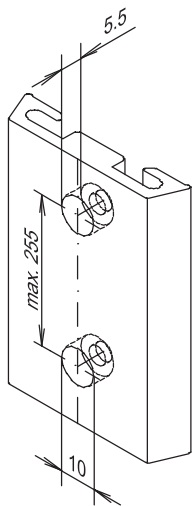


figure 12.8

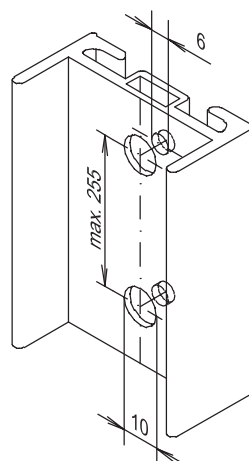


figure 12.7