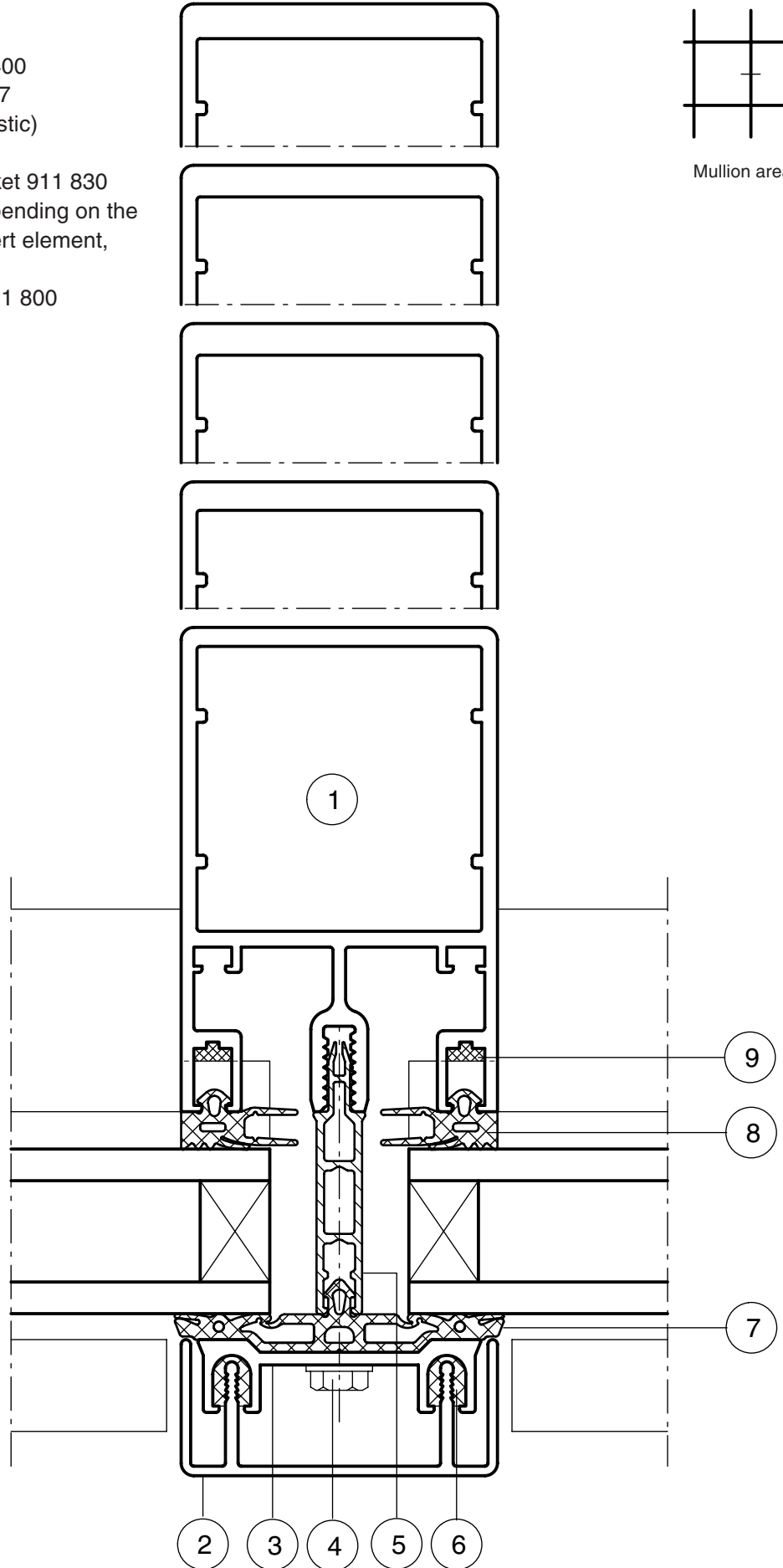
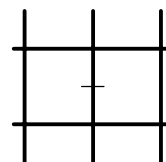


- 1 Mullion profile depending on static requirements
- 2 Cover profile 450 601
- 3 Pressure plate profile 419 400
- 4 Façade fixing screw 911 927
- 5 Spacer profile 910 067 (plastic)
- 6 Rubber clip piece 906 789
- 7 Pressure plate glazing gasket 911 830
- 8 Internal glazing gasket, depending on the thickness of the glass / insert element, cf. glazing tables
- 9 Transom housing gasket 911 800

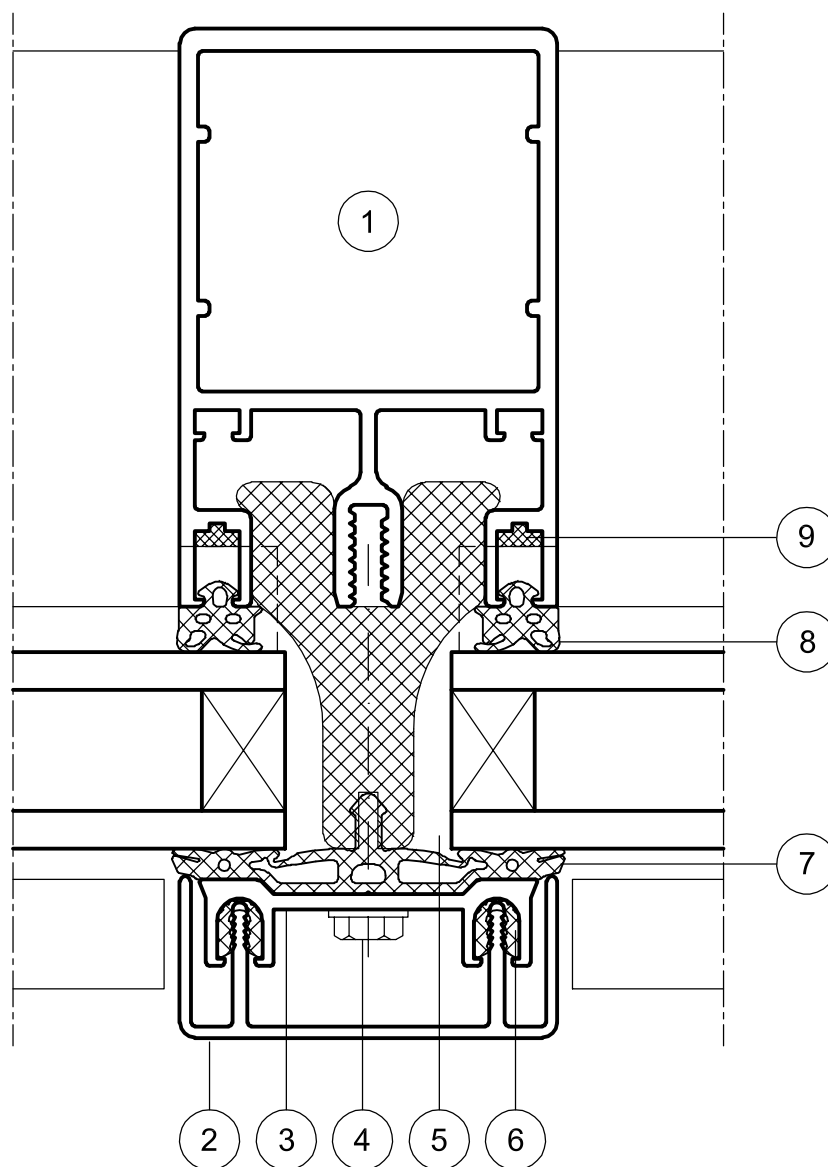


M 1:1

- 1 Mullion profile 519 101
- 2 Cover profile 450 601
- 3 Pressure plate profile 419 400
- 4 Façade fixing screw 911 927
- 5 Insulating profile 910 074
- 6 Rubber clip piece 906 789
- 7 Pressure plate glazing gasket 911 830
- 8 Internal glazing gasket, according to the thickness of the glass/
insert element, cf. glazing tables
- 9 Transom housing gasket 911 800

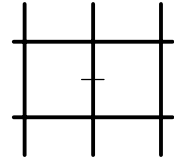


Mullion-transom-façade
Mullion area with
- insulating profile
- pressure plate profile with
continuous pressure plate
glazing gasket
- cover profile
with rubber clip piece

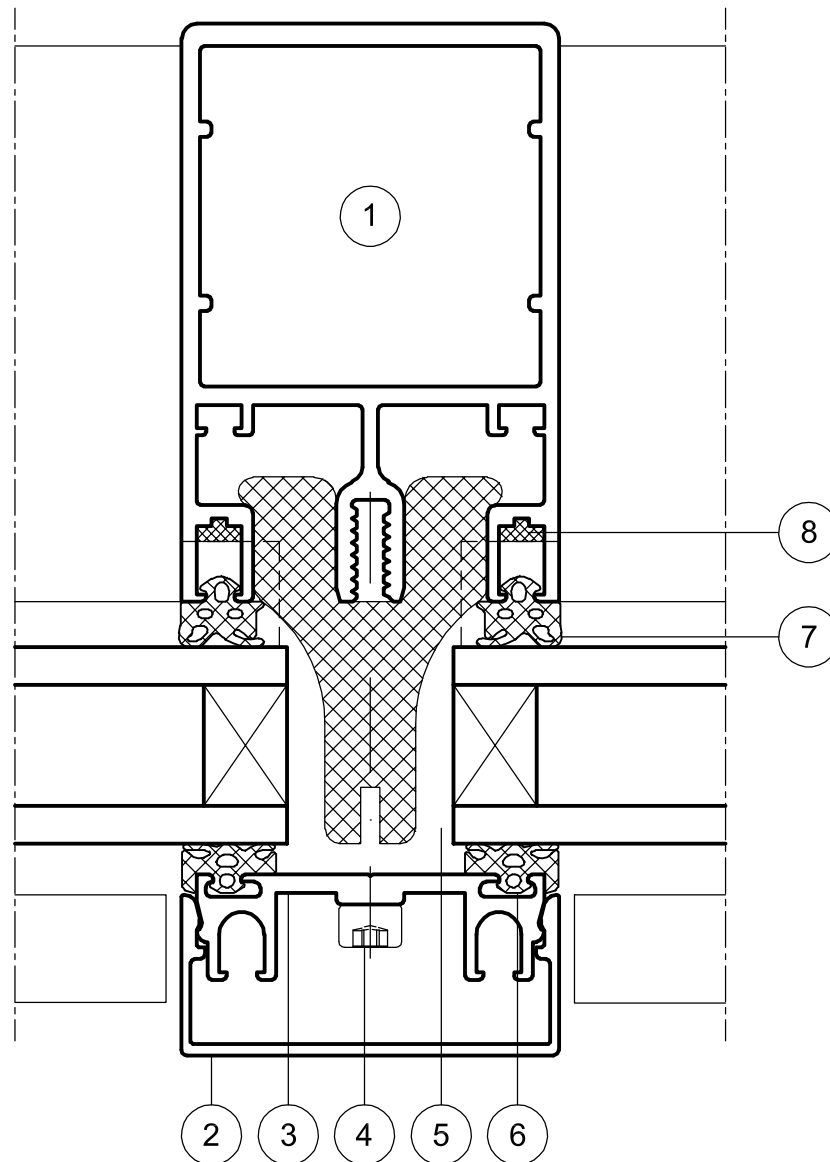


M 1:1

- 1 Mullion profile 519 101
- 2 Snap in cover profile 419 606
- 3 Pressure plate profile 419 430
- 4 Façade fixing screw 911 937
- 5 Insulating profile 910 074
- 6 Pressure plate glazing gasket 912 616
- 7 Internal glazing gasket, according to the thickness of the glass/
insert element, cf. glazing tables
- 8 Transom housing gasket 911 800

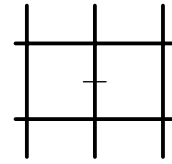


Mullion-transom-façade
Mullion area with
- insulating profile
- pressure plate profile with
individual pressure plate
glazing gaskets
- snap in cover profile

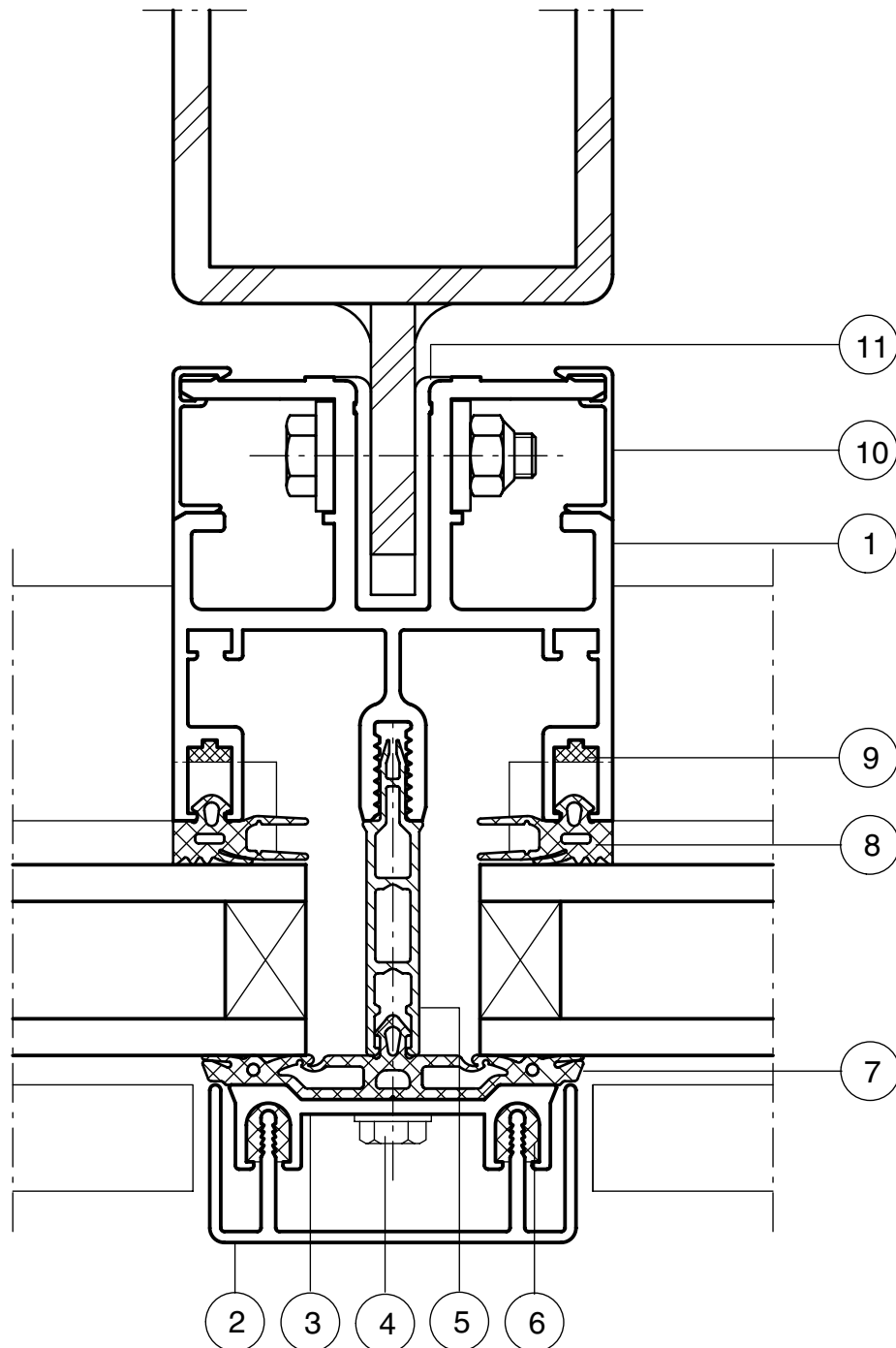


M 1:1

- 1 Mullion profile 423 140
- 2 Cover profile 450 601
- 3 Pressure plate profile 419 400
- 4 Façade fixing screw 911 927
- 5 Spacer profile 910 067 (plastic)
- 6 Rubber clip piece 906 789
- 7 Pressure plate glazing gasket 911 830
- 8 Internal glazing gasket, depending on the thickness of the glass / insert element, cf. glazing tables
- 9 Transom housing gasket 911 800
- 10 Supplementary profile 460 903
- 11 Plastic sliding piece 911 904

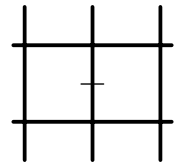


Mullion area

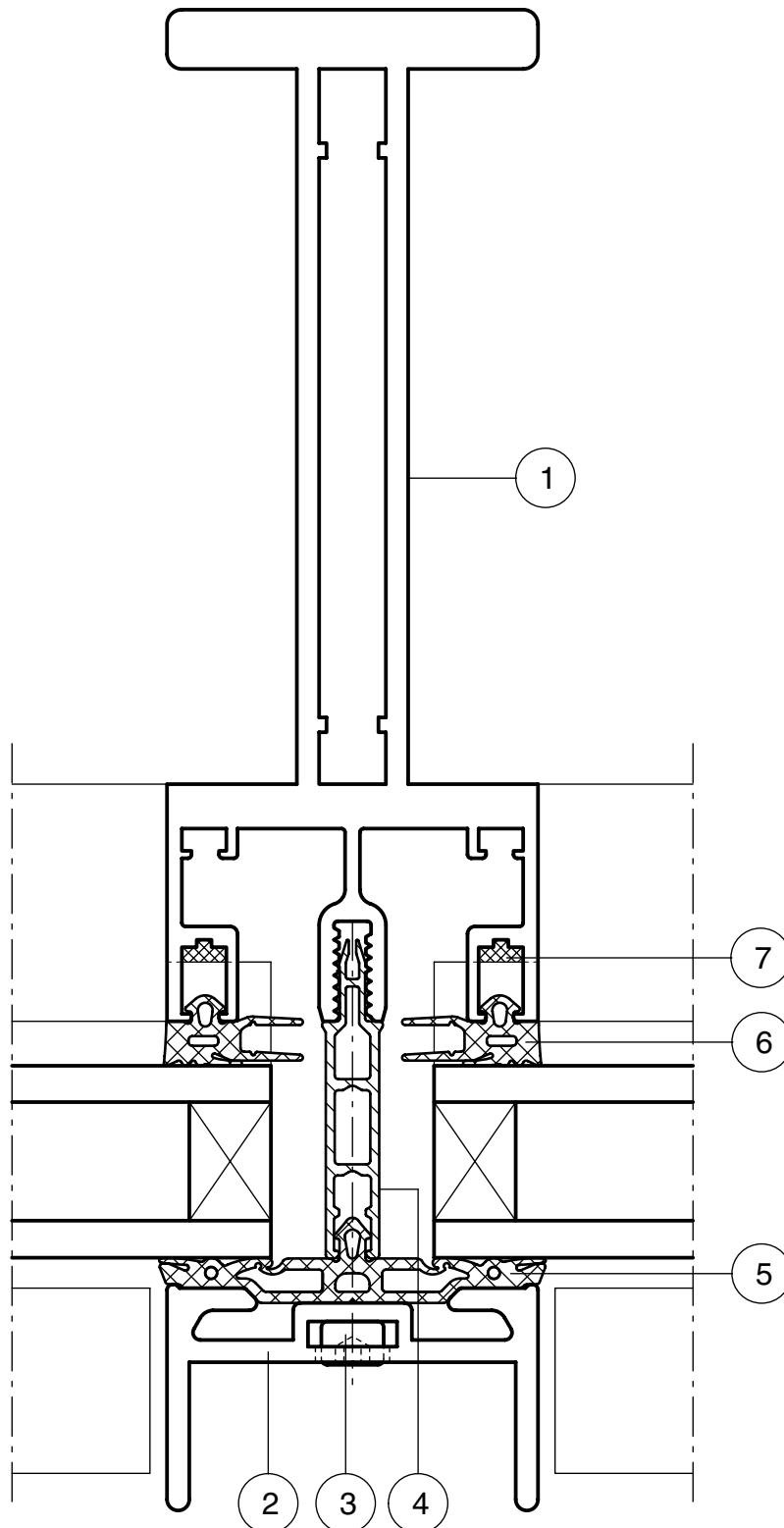


M 1:1

- 1 Mullion profile 519 140
- 2 Pressure plate profile 519 421
- 3 Façade fixing screw 911 937
- 4 Spacer profile 910 067 (plastic)
- 5 Pressure plate glazing gasket 911 830
- 6 Internal glazing gasket, depending on the thickness of the glass / insert element, cf. glazing tables
- 7 Transom housing gasket 911 800

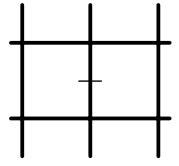


Mullion area

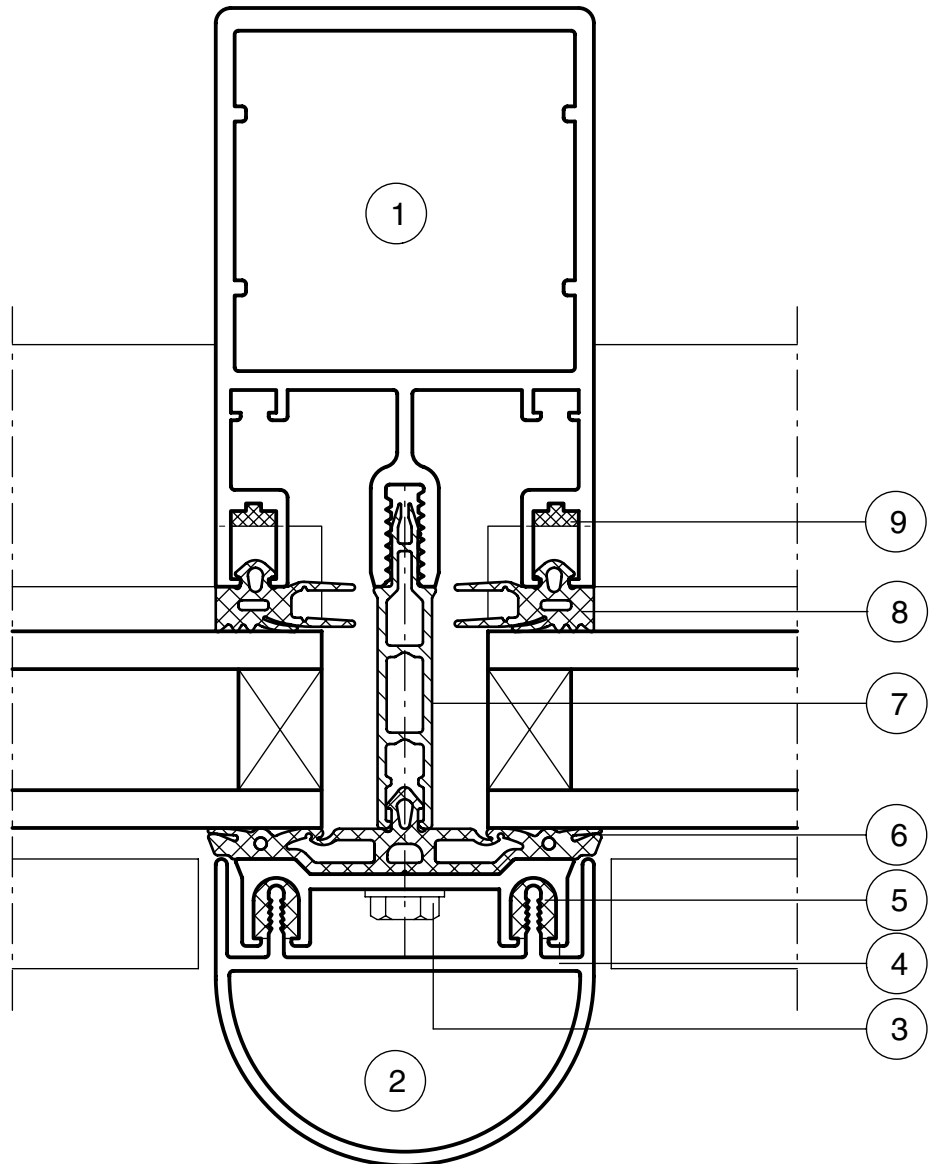


M 1:1

- 1 Mullion profile depending on static requirements
- 2 Cover profile 551 060
- 3 Façade fixing screw 911 927
- 4 Pressure plate profile 419 400
- 5 Rubber clip piece 906 789
- 6 Pressure plate glazing gasket 911 830
- 7 Spacer profile 910 067 (plastic)
- 8 Internal glazing gasket, depending on the thickness of the glass / insert element, cf. glazing tables
- 9 Transom housing gasket 911 800

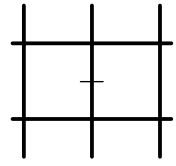


Mullion area

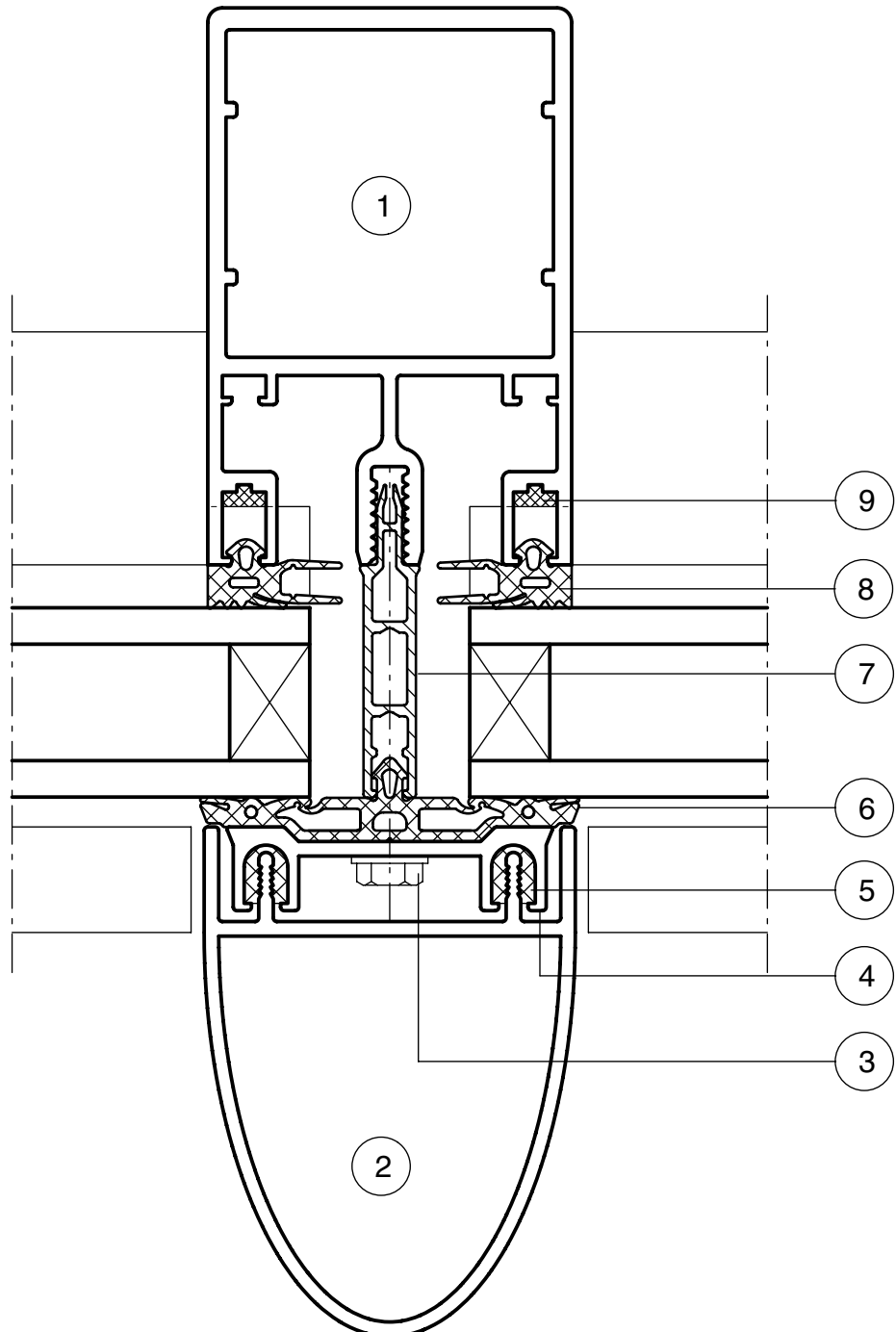


M 1:1

- 1 Mullion profile depending on static requirements
- 2 Cover profile 551 052
- 3 Façade fixing screw 911 927
- 4 Pressure plate profile 419 400
- 5 Rubber clip piece 906 789
- 6 Pressure plate glazing gasket 911 830
- 7 Spacer profile 910 067 (plastic)
- 8 Internal glazing gasket, depending on the thickness of the glass / insert element, cf. glazing tables
- 9 Transom housing gasket 911 800

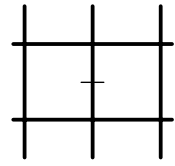


Mullion area

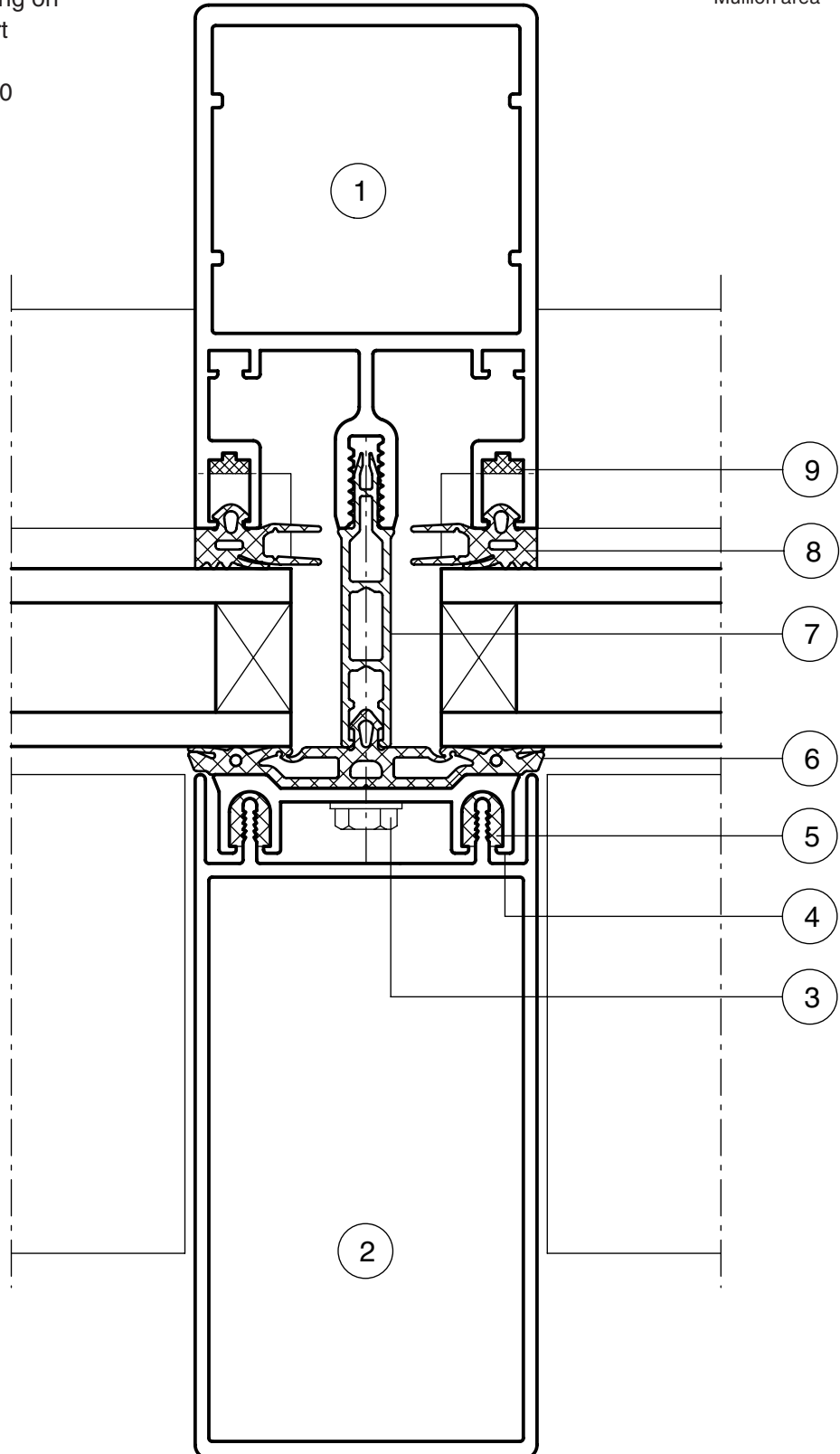


M 1:1

- 1 Mullion profile depending on static requirements
- 2 Cover profile 551 056
- 3 Façade fixing screw 911 927
- 4 Pressure plate profile 419 400
- 5 Rubber clip piece 906 789
- 6 Pressure plate glazing gasket 911 830
- 7 Spacer profile 910 067 (plastic)
- 8 Internal glazing gasket, depending on the thickness of the glass / insert element, cf. glazing tables
- 9 Transom housing gasket 911 800

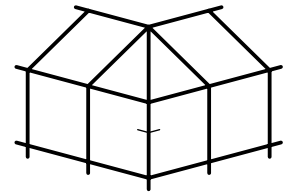


Mullion area

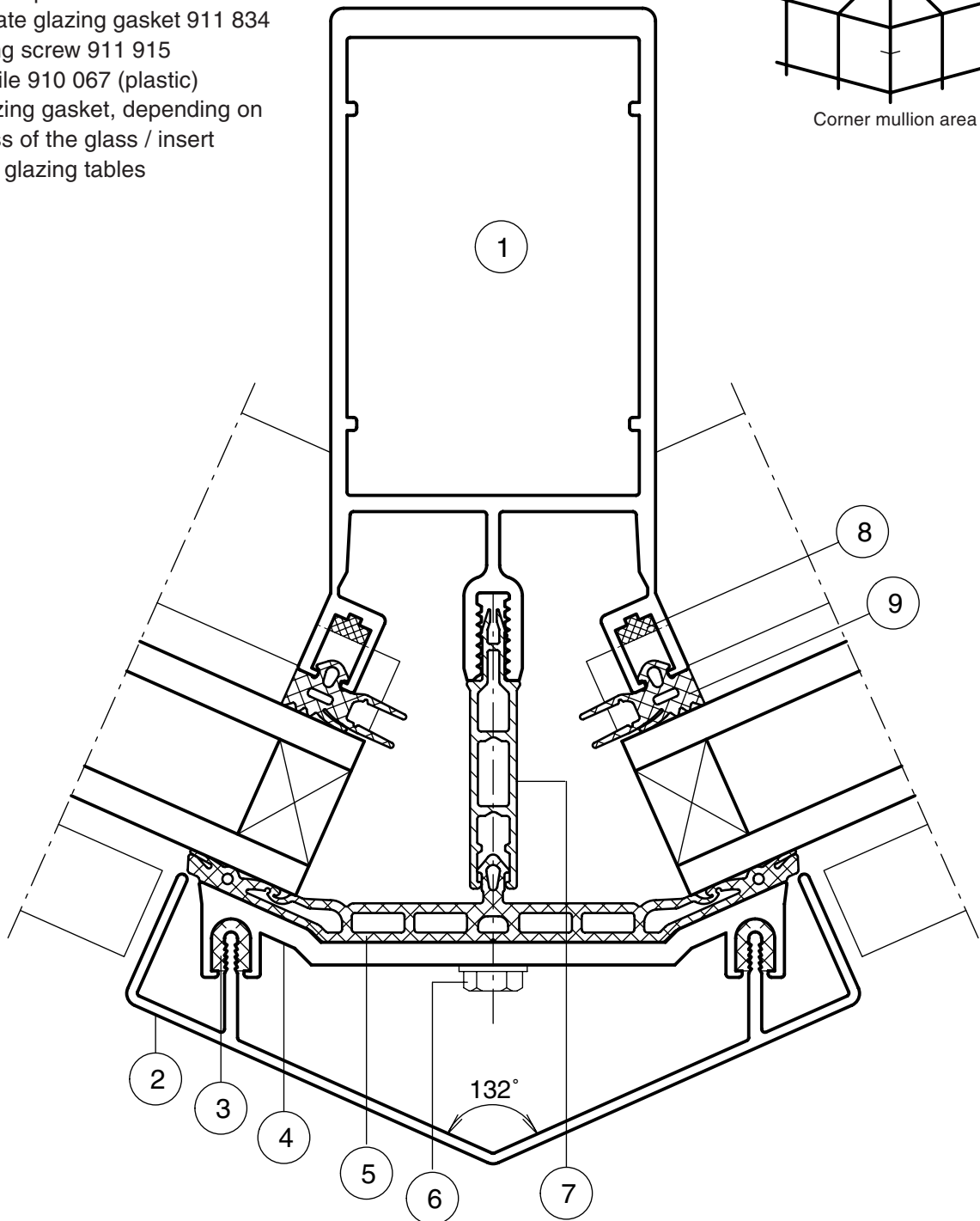


M 1:1

- 1 Mullion profile depending on static requirements
- 2 Cover profile 423 610
- 3 Rubber clip piece 906 789
- 4 Pressure plate profile 419 410
- 5 Pressure plate glazing gasket 911 834
- 6 Façade fixing screw 911 915
- 7 Spacer profile 910 067 (plastic)
- 8 Internal glazing gasket, depending on the thickness of the glass / insert element, cf. glazing tables



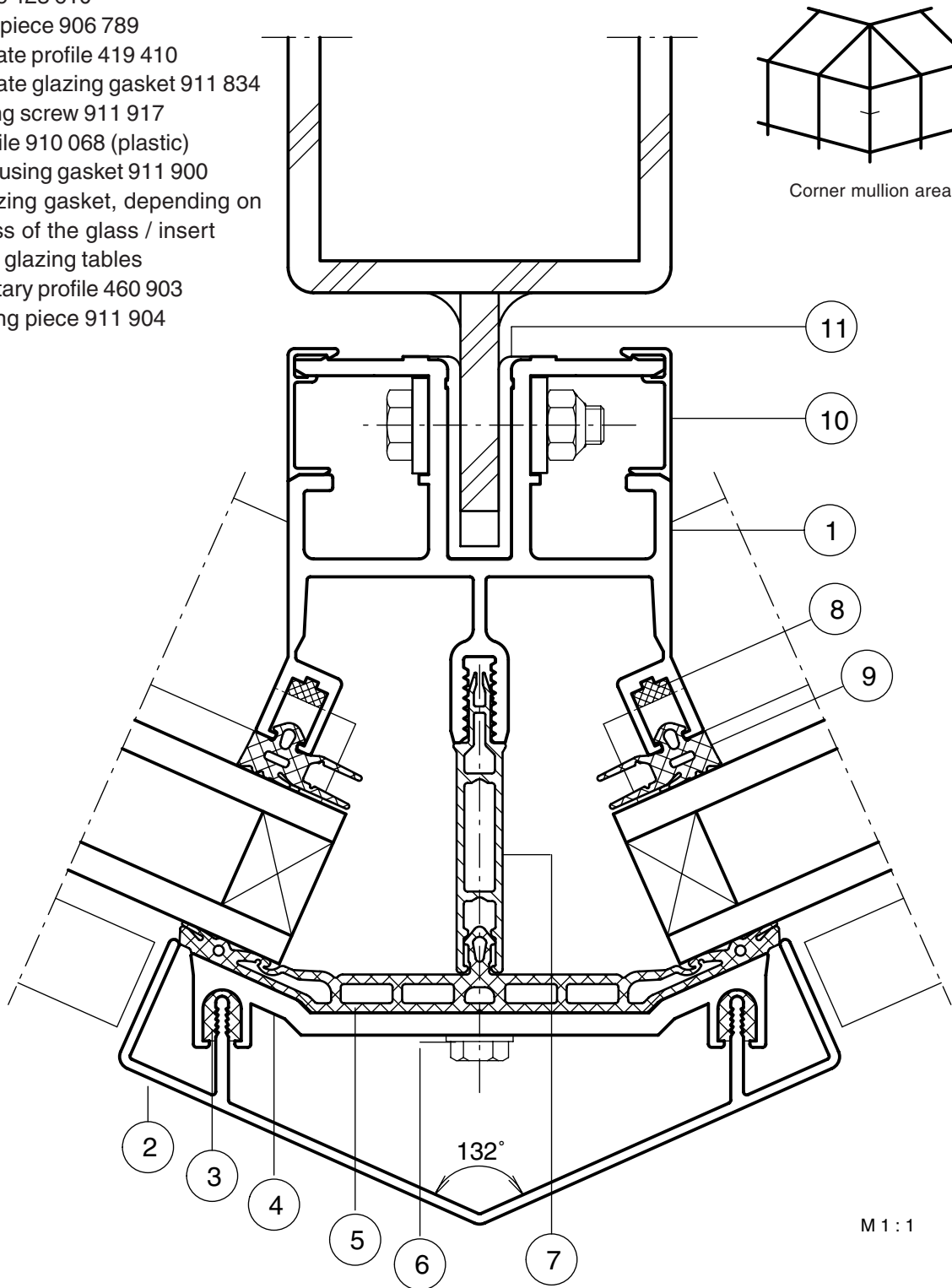
Corner mullion area



1:1

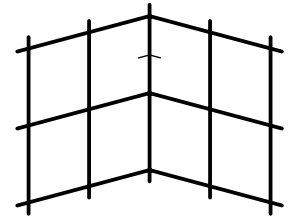
	168°	156°	144°	132°
① Mullion profiles	519 110 519 115 519 120	519 111 519 116 519 121	519 112 519 117 519 122	519 113 519 118 519 123
② Cover profile	460 606	423 606	423 607	423 610
④ Pressure plate profile	419 405	419 406	419 407	419 410
⑤ Pressure plate glazing gasket	911 831	911 832	911 833	911 834
⑥ Façade fixing screw	911 916	911 915	911 915	911 915
⑦ Spacer profile	910 067	910 067	910 067	910 067

- 1 Mullion profile 423 141
- 2 Cover profile 423 610
- 3 Rubber clip piece 906 789
- 4 Pressure plate profile 419 410
- 5 Pressure plate glazing gasket 911 834
- 6 Façade fixing screw 911 917
- 7 Spacer profile 910 068 (plastic)
- 8 Transom housing gasket 911 900
- 9 Internal glazing gasket, depending on the thickness of the glass / insert element, cf. glazing tables
- 10 Supplementary profile 460 903
- 11 Plastic sliding piece 911 904

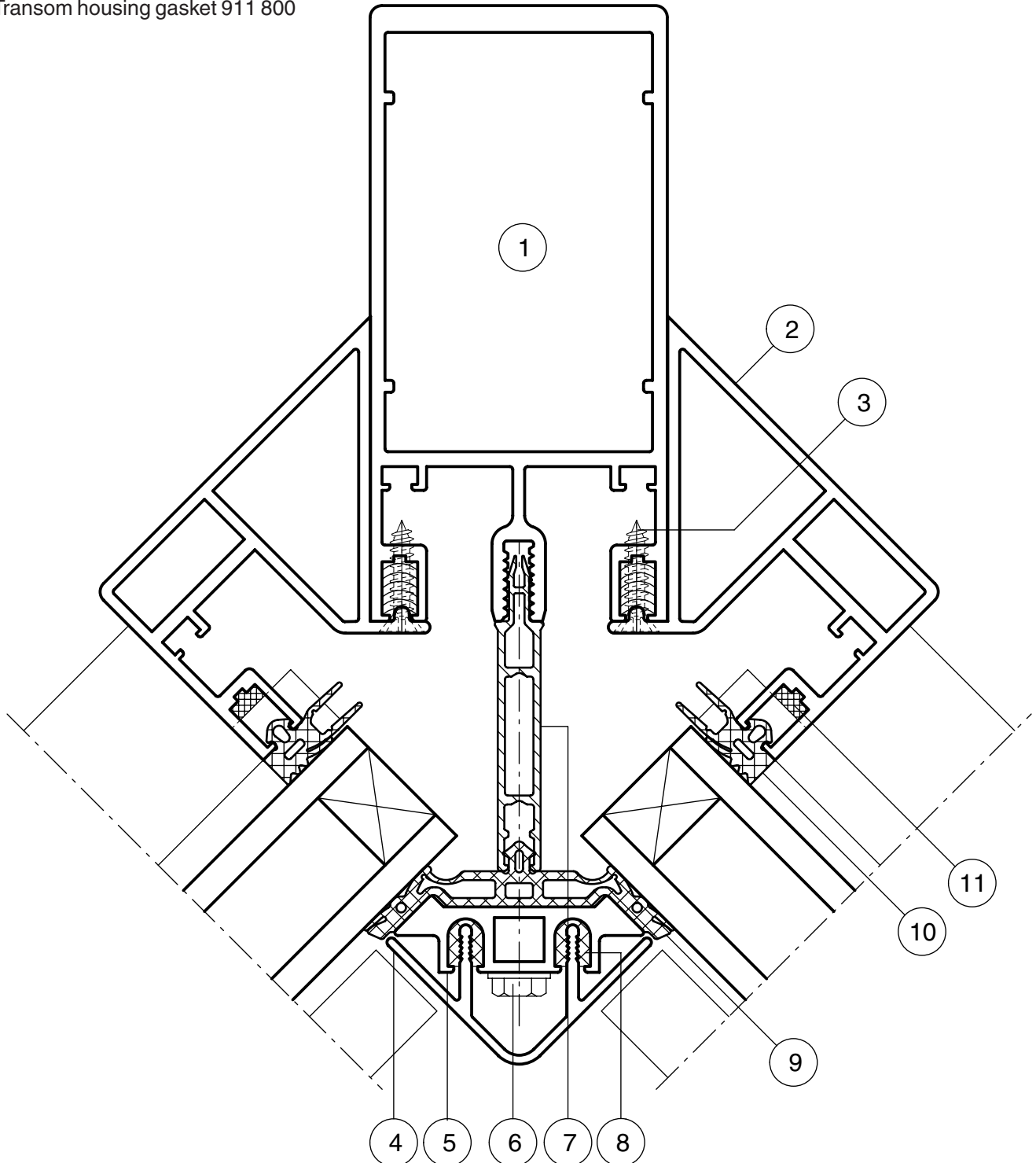


	168°	156°	144°	132°
① Mullion profile	423 144	423 143	423 142	423 141
② Cover profile	460 606	423 606	460 608	423 610
④ Pressure plate profile	419 405	419 406	419 408	419 410
⑤ Pressure plate glazing gasket	911 831	911 832	911 834	911 834
⑥ Façade fixing screw	911 916	911 915	911 915	911 917
⑦ Spacer profile	910 067	910 067	910 067	910 068

- 1 Mullion profile depending on static requirements, see page 6
- 2 Profile 523 910
- 3 Screw 900 656, ST 3.9 x 19 DIN 7982
- 4 Cover profile 423 603
- 5 Pressure plate profile 523 403
- 6 Façade fixing screw 911 929
- 7 Spacer profile 910 069 (plastic)
- 8 Rubber clip piece 906 789
- 9 Pressure plate glazing gasket 911 830
- 10 Internal glazing gasket, depending on the thickness of the glass / insert element, cf. glazing tables
- 11 Transom housing gasket 911 800

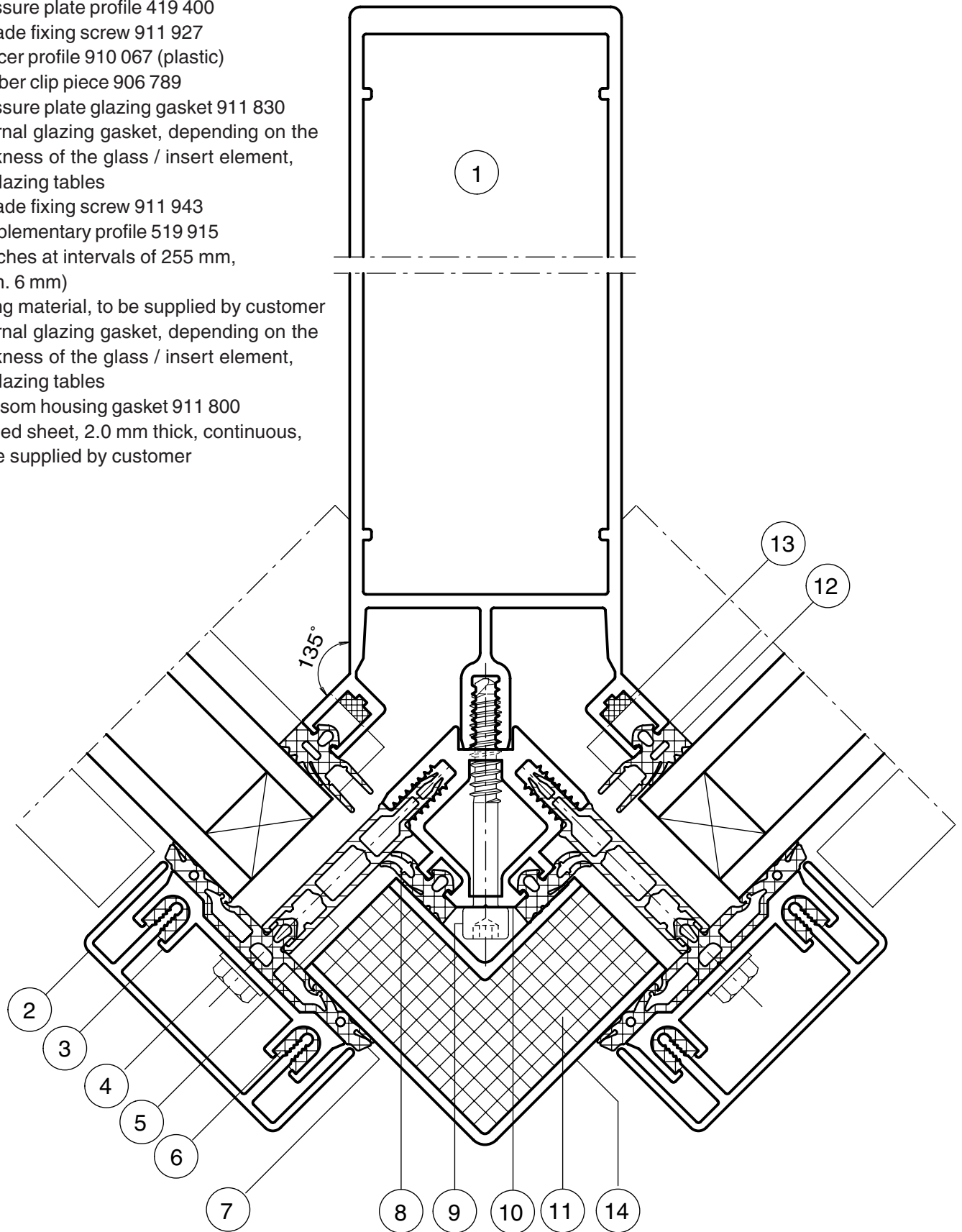


Internal corner



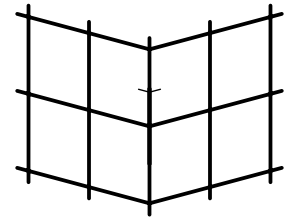
M 1:1

- 1 Mullion profile 519 125
- 2 Cover profile 450 601
- 3 Pressure plate profile 419 400
- 4 Façade fixing screw 911 927
- 5 Spacer profile 910 067 (plastic)
- 6 Rubber clip piece 906 789
- 7 Pressure plate glazing gasket 911 830
- 8 Internal glazing gasket, depending on the thickness of the glass / insert element, cf. glazing tables
- 9 Façade fixing screw 911 943
- 10 Supplementary profile 519 915 (notches at intervals of 255 mm, diam. 6 mm)
- 11 Filling material, to be supplied by customer
- 12 Internal glazing gasket, depending on the thickness of the glass / insert element, cf. glazing tables
- 13 Transom housing gasket 911 800
- 14 Folded sheet, 2.0 mm thick, continuous, to be supplied by customer

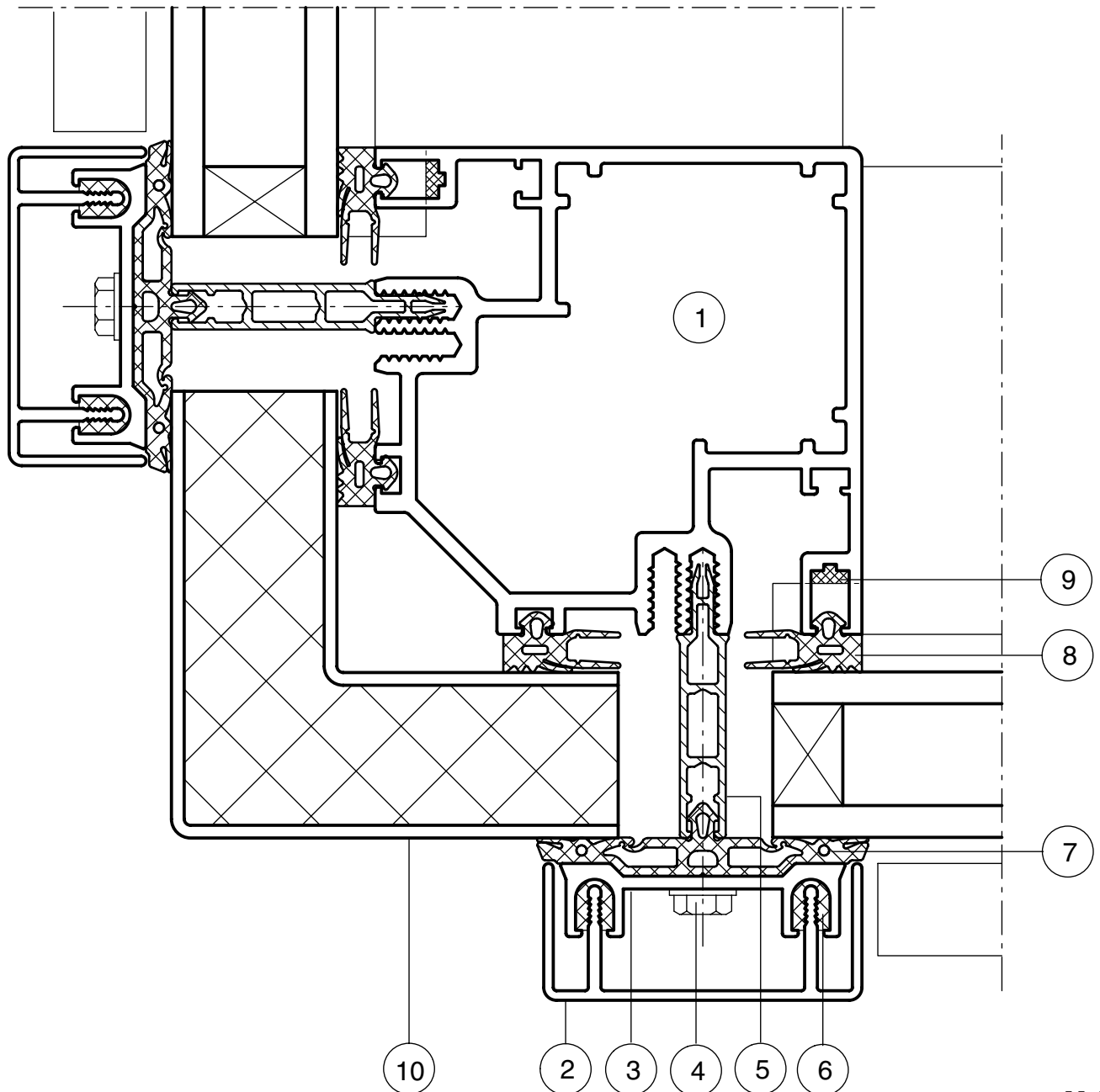


M 1:1

- 1 Corner mullion profile 519 180
- 2 Cover profile 450 601
- 3 Pressure plate profile 419 400
- 4 Façade fixing screw 911 927
- 5 Spacer profile 910 067 (plastic)
- 6 Rubber clip piece 906 789
- 7 Pressure plate glazing gasket 911 830
- 8 Internal glazing gasket, depending on the thickness of the glass / insert element, cf. glazing tables
- 9 Transom housing gasket 911 800
- 10 Folded sheet, 2.0 mm thick, continuous, to be supplied by customer

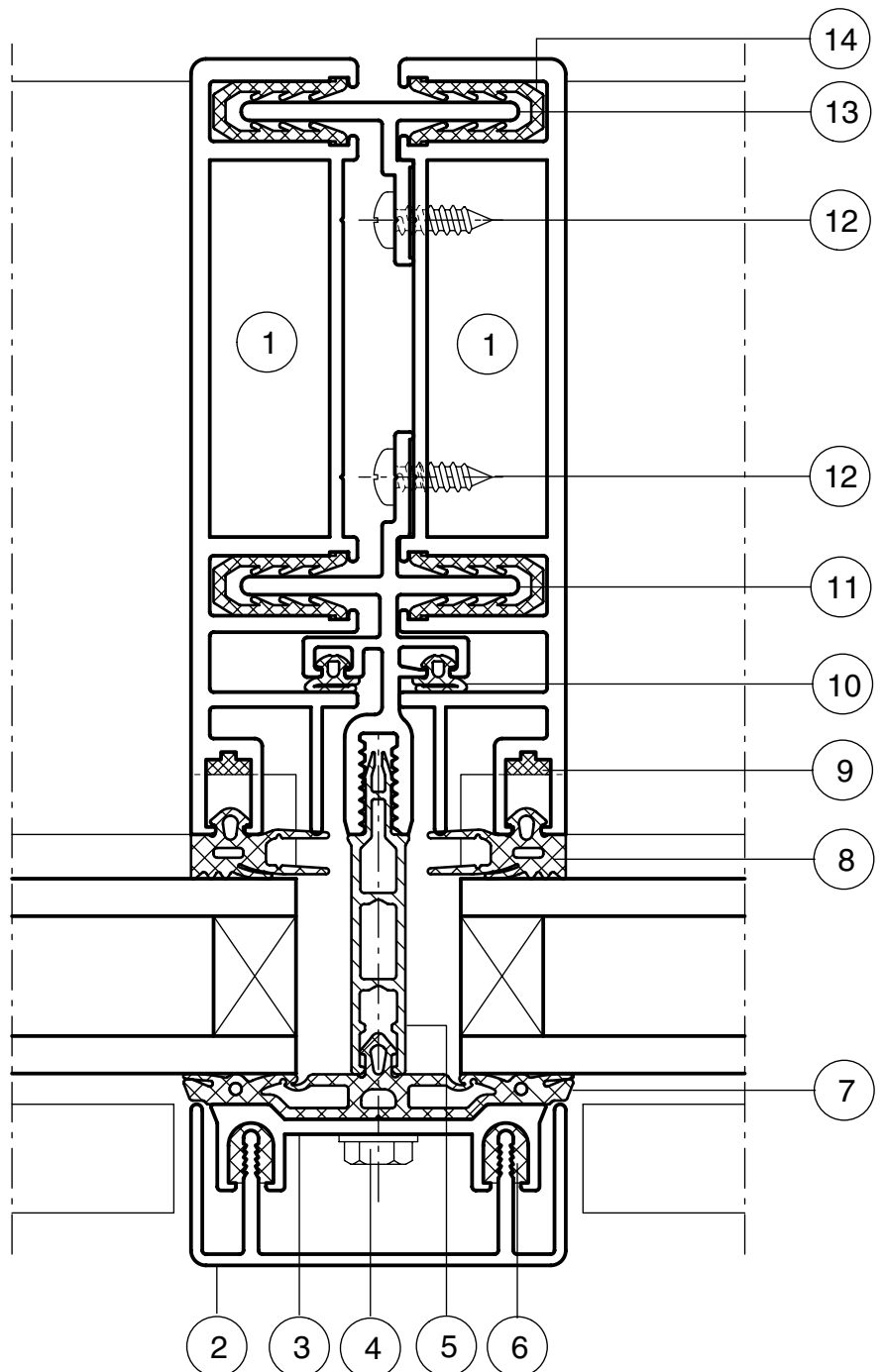
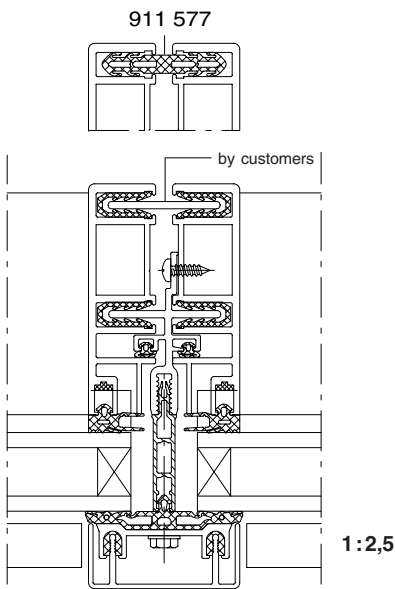
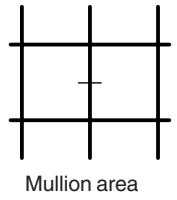


External corner



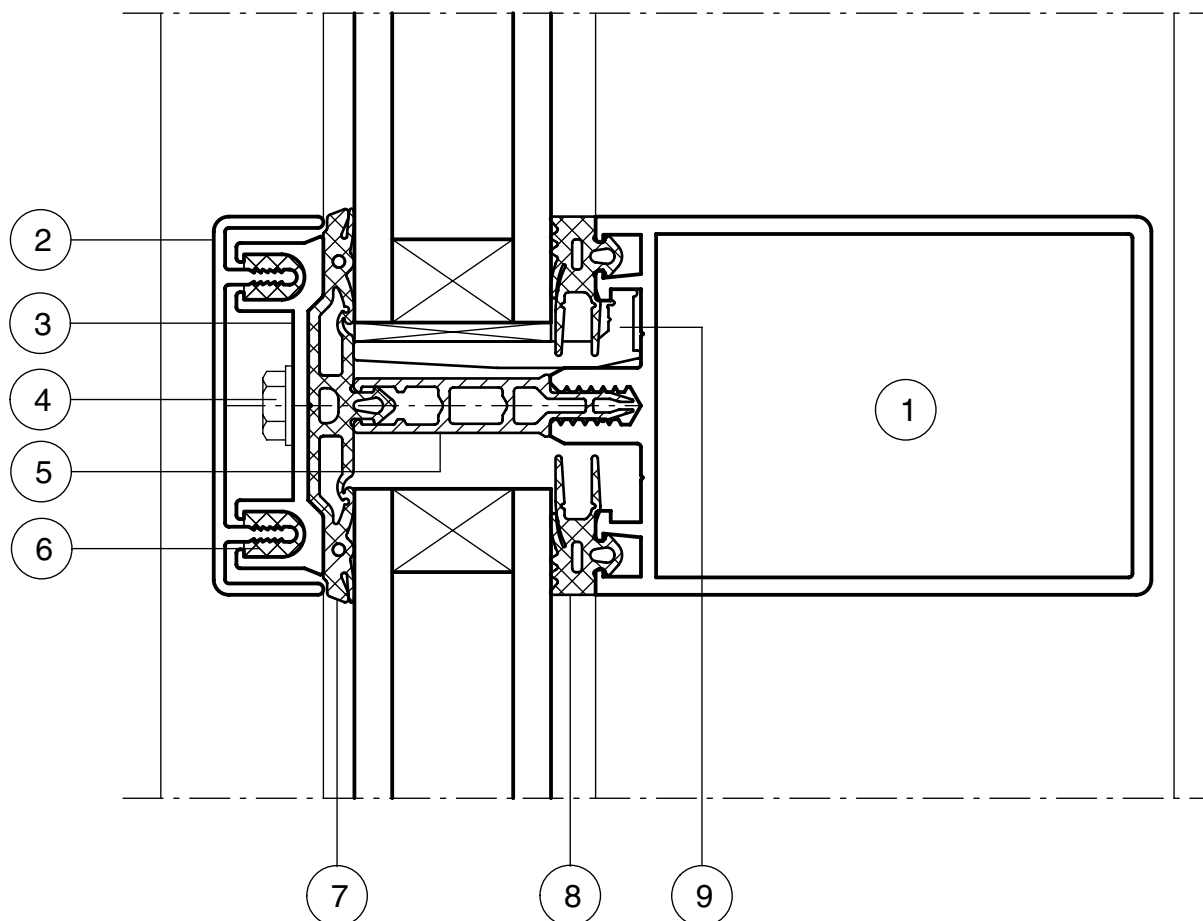
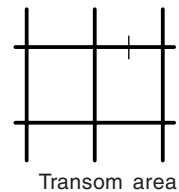
M 1:1

- 1 Split mullion profile according to static requirements
- 2 Cover profile 450 601
- 3 Pressure plate profile 419 400
- 4 Façade fixing screw 911 927
- 5 Spacer profile 910 067 (plastic)
- 6 Rubber clip piece 906 789
- 7 Pressure plate glazing gasket 911 830
- 8 Internal glazing gasket, according to the thickness of the glass / insert element, cf. glazing tables
- 9 Transom housing gasket 911 800
- 10 Gasket 911 025
- 11 Supplementary profile 419 135
- 12 Screw 906 451 ST 4.2 x 14, self-drilling
- 13 Supplementary profile 419 136
- 14 Expansion gasket 904 107



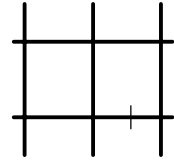
M 1:1

- 1 Transom profile 519 301
- 2 Cover profile 450 600
- 3 Pressure plate profile 419 400
- 4 Façade fixing screw 911 914
- 5 Spacer profile 910 066 (plastic)
- 6 Rubber clip piece 906 789
- 7 Pressure plate glazing gasket 911 830
- 8 Internal glazing gasket, depending on the thickness of the glass / insert element, cf. glazing tables
- 9 Glass support 911 810

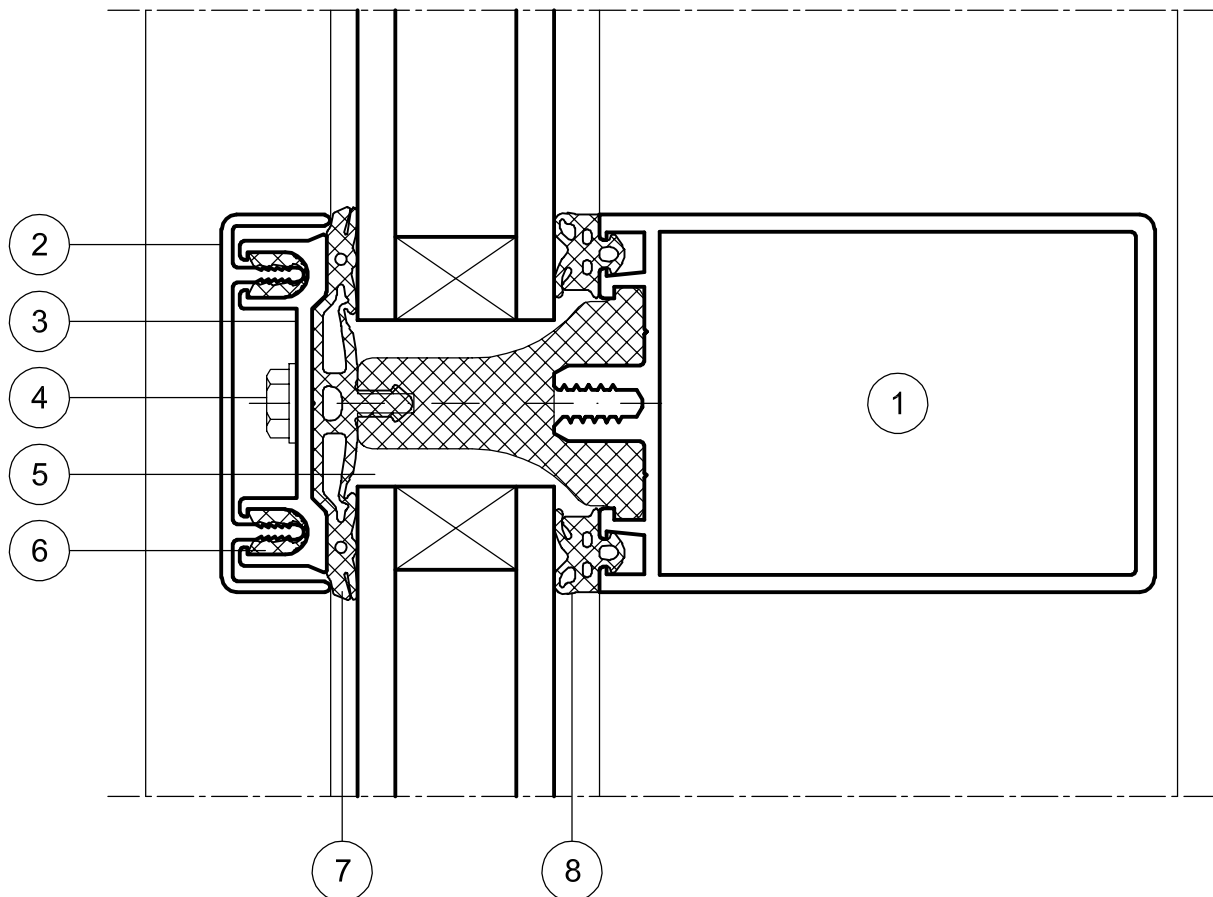


M 1:1

- 1 Transom profile 519 301
- 2 Cover profile 450 600
- 3 Pressure plate profile 419 400
- 4 Façade fixing screw 911 914
- 5 Insulating profile 910 072
- 6 Rubber clip piece 906 789
- 7 Pressure plate glazing gasket 911 830
- 8 Internal glazing gasket, according to the thickness of the glass/
insert element, cf. glazing tables

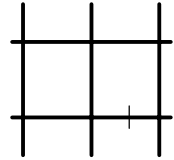


Mullion-transom
construction façade
Deepened transom with
- insulating profile
- pressure plate profile
with continuous pressure
plate glazing gasket
- cover profile
with rubber clip piece

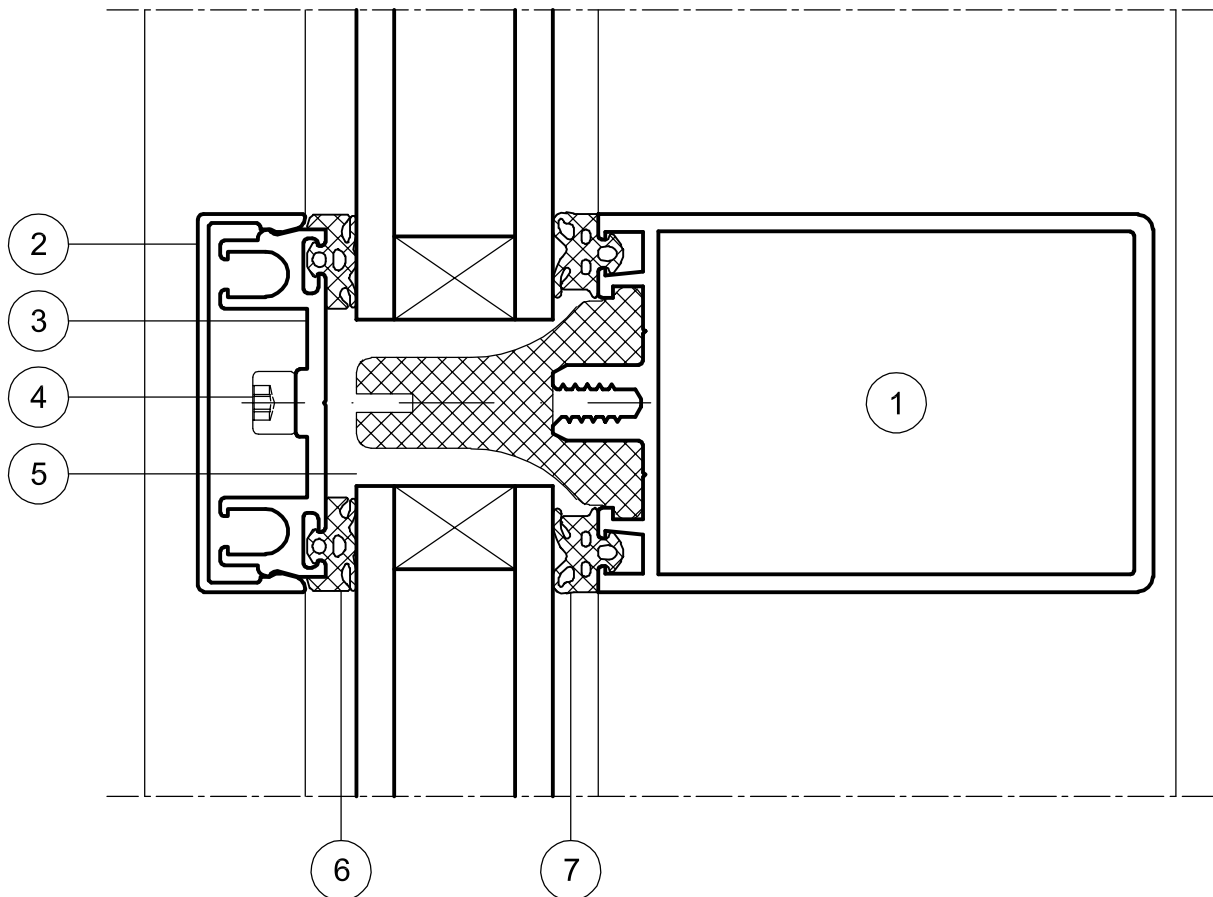
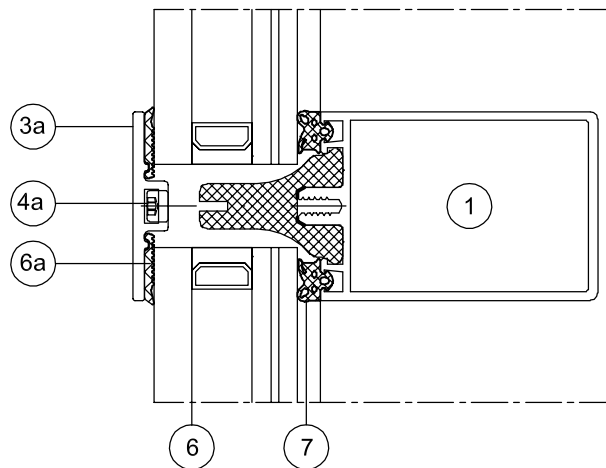


M 1:1

- 1 Transom profile 519 301
- 2 Snap in cover profile 419 605
- 3 Pressure plate profile 419 430
- 3a Pressure plate profile 519 422
- 4 Façade fixing screw 911 936
- 4a Façade fixing screw 911 936
- 5 Insulating profile 910 072
- 6 Pressure plate glazing gasket 912 616
- 6a Pressure plate glazing gasket 914 213
- 7 Internal glazing gasket, according to the thickness of the glass/
insert element, cf. glazing tables

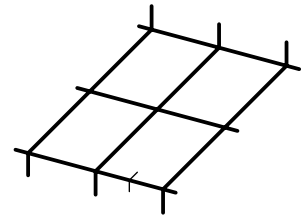


Mullion-transom
construction façade
Deepened transom with
- insulating profile
- pressure plate profile
with individual pressure
plate glazing gaskets
- snap in cover profile

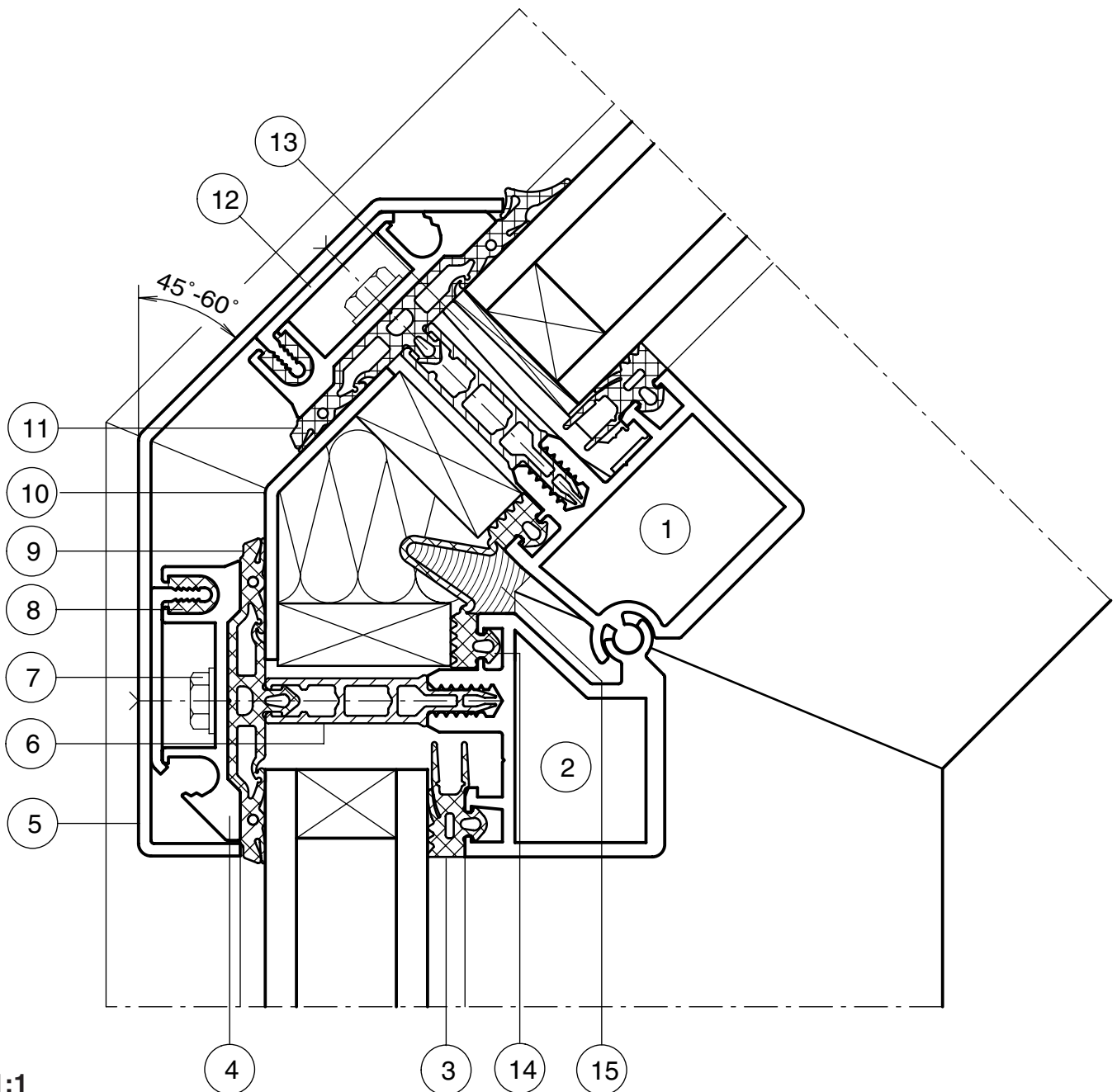


M 1:1

- 1 Transom profile 519 320
- 2 Transom profile 519 321
- 3 Internal glazing gasket, depending on the thickness of the glass / insert element, cf. glazing tables
- 4 Pressure plate profile 419 403
- 5 Folded sheet, 2.0 mm thick, continuous, to be supplied by customer
- 6 Spacer profile 910 066 (plastic)
- 7 Façade fixing screw 911 914
- 8 Rubber clip piece 906 789
- 9 Pressure plate glazing gasket 911 830
- 10 Folded sheet, 2.0 mm thick, continuous, to be supplied by customer
- 11 Pressure plate glazing gasket 911 845
- 12 Fixing material 911 564
- 13 Glass support 911 810
- 14 Flexible gasket 911 819
- 15 Adhesive and sealing compound 912 717, 912 718

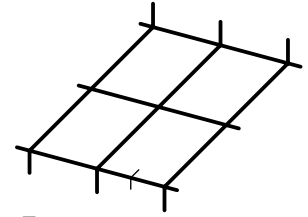


Transom area
External corner 45°-60°
(roof pitch up to at least 30°)

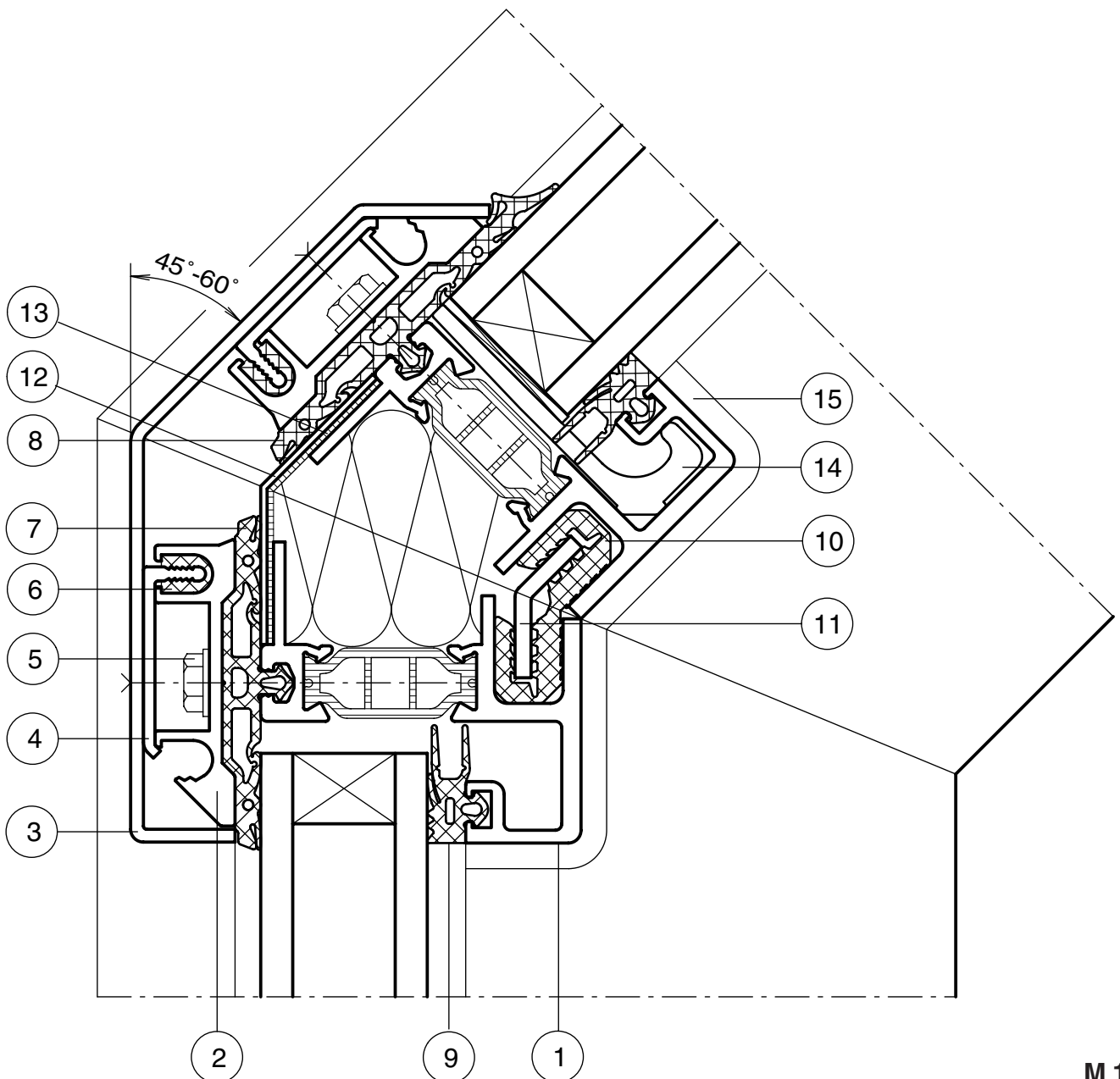


M 1:1

- 1 Transom profile 419 371
- 2 Pressure plate profile 419 403
- 3 Folded sheet, 2.0 mm thick, continuous, to be supplied by customer
- 4 Fixing material 911 564
- 5 Façade fixing screw 911 932
- 6 Rubber clip piece 906 789
- 7 Pressure plate glazing gasket 911 830
- 8 Pressure plate glazing gasket 911 845
- 9 Internal glazing gasket, depending on the thickness of the glass / insert element, cf. glazing tables
- 10 Connecting gasket 906 775
- 11 Folded sheet, 2.5 mm thick, to be supplied by customer
- 12 Folded sheet, 1.0 mm thick, continuous, to be supplied by contractor
- 13 Adhesive tape 3M Y 4945 (Scotch Acrylic Foam or equivalent), to be supplied by customer
- 14 Glass support 911 853
- 15 Transom housing gasket 994 507, supplemented by gasket 911 718

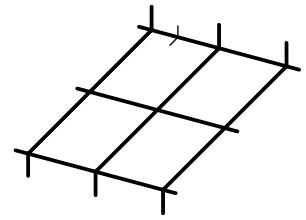


Transom area
External corner 45°-60°
(roof pitch up to at least 30°)

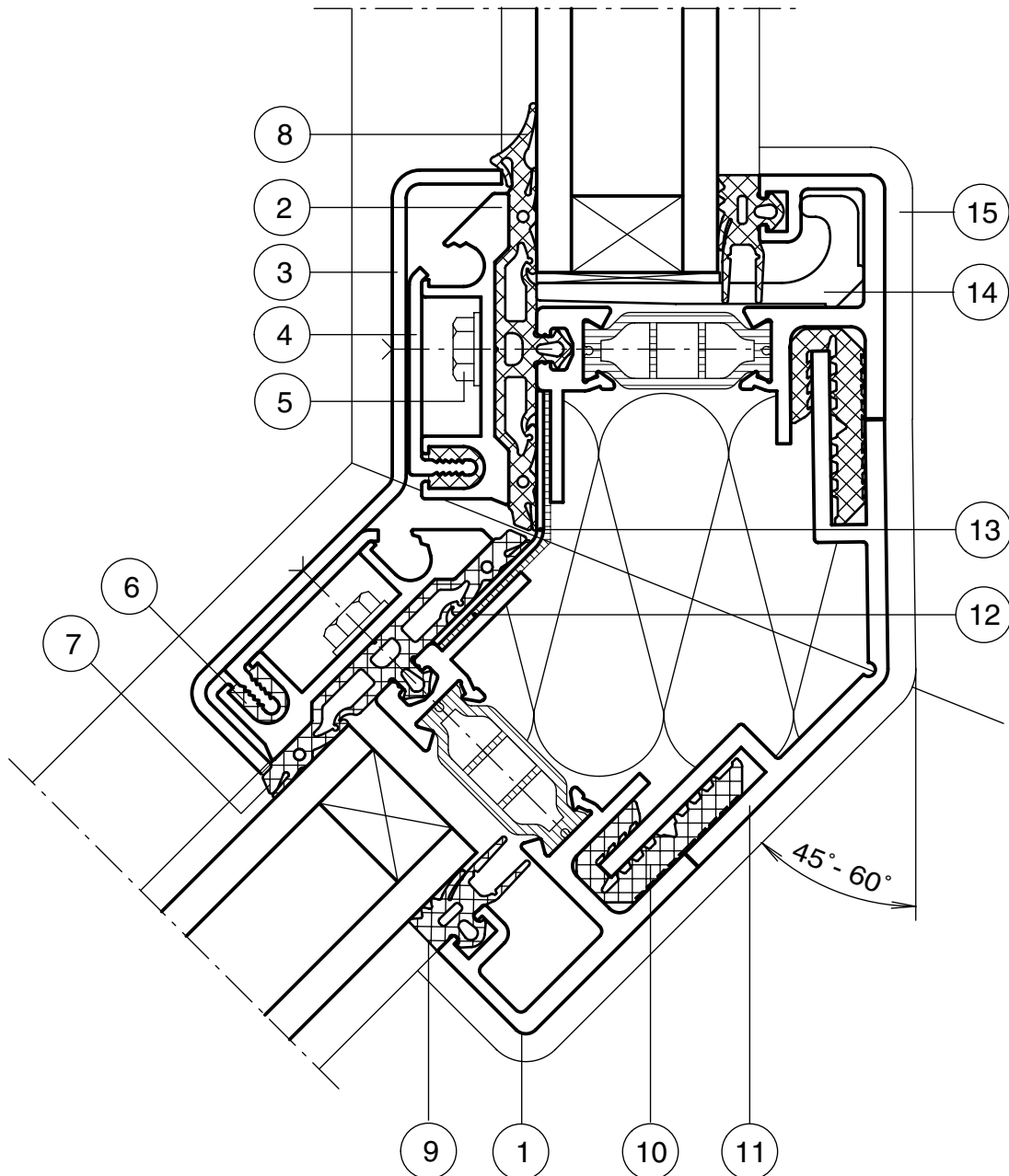


M 1:1

- 1 Transom profile 419 371
- 2 Pressure plate profile 419 403
- 3 Folded sheet, 2.0 mm thick, continuous, to be supplied by customer
- 4 Fixing material 911 564
- 5 Façade fixing screw 911 932
- 6 Rubber clip piece 906 789
- 7 Pressure plate glazing gasket 911 830
- 8 Pressure plate glazing gasket 911 845
- 9 Internal glazing gasket, depending on the thickness of the glass / insert element, cf. glazing tables
- 10 Connecting gasket 906 775
- 11 Supplementary profile 460 902
- 12 Adhesive tape 3M Y 4945 (Scotch Acrylic Foam or equivalent), to be supplied by customer
- 13 Folded sheet, 1.0 mm thick, continuous, to be supplied by contractor
- 14 Glass support 911 853
- 15 Transom housing gasket 994 507, supplemented by gasket 911 718

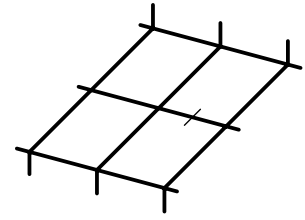


Transom area
External and
internal corner 45°

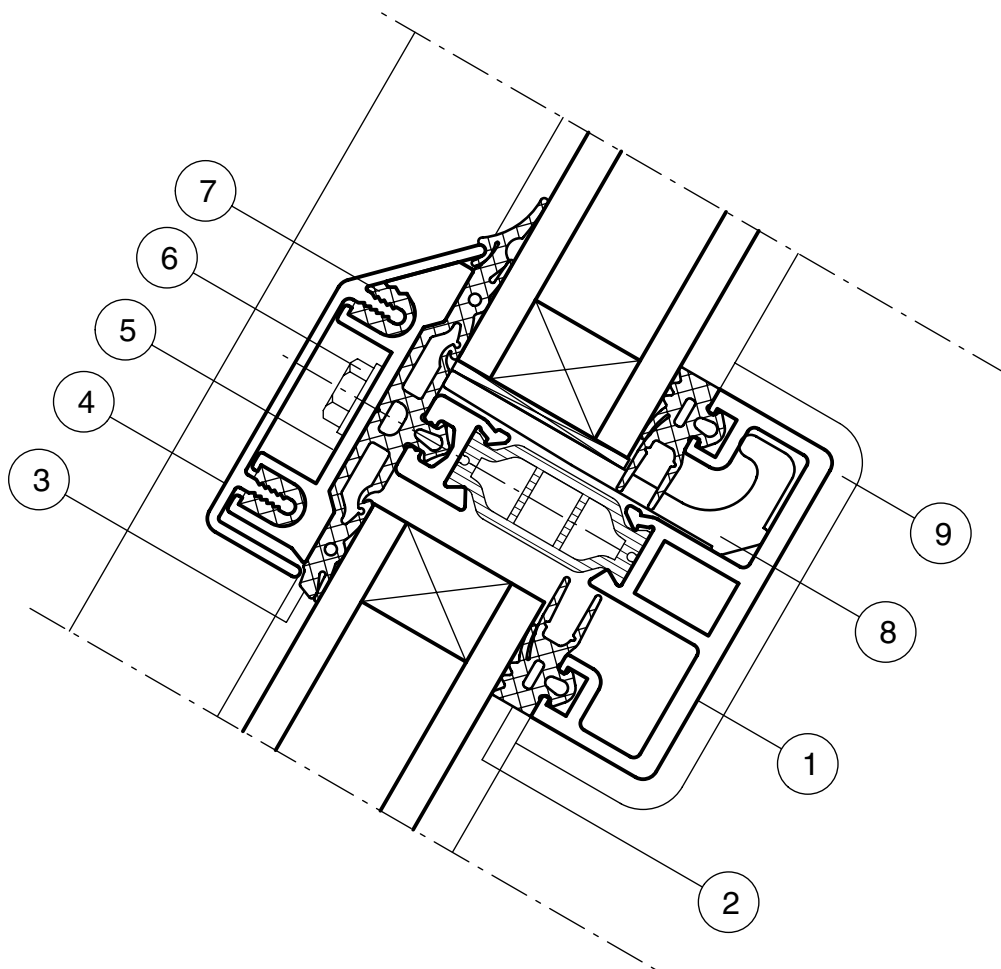


M 1:1

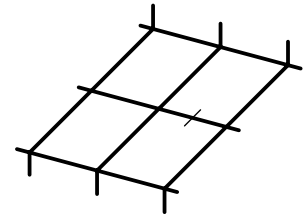
- 1 Transom profile 519 310
- 2 Internal glazing gasket, depending on the thickness of the glass / insert element, cf. glazing tables
- 3 Pressure plate glazing gasket 911 845
- 4 Cover profile 419 603
- 5 Pressure plate profile 419 403
- 6 Façade fixing screw 911 932
- 7 Rubber clip piece 906 789
- 8 Glass support 911 853
- 9 Transom housing gasket 911 801



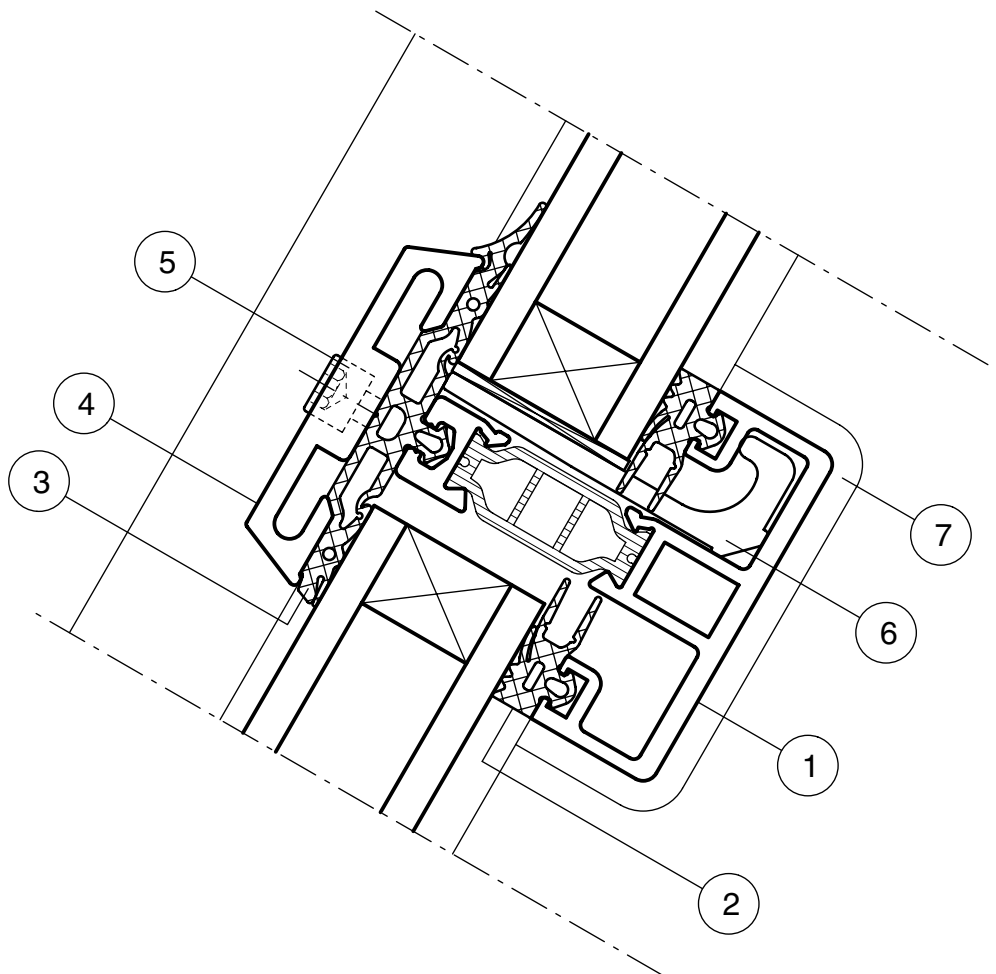
Transom area



- 1 Transom profile 519 310
- 2 Internal glazing gasket, depending on the thickness of the glass / insert element, cf. glazing tables
- 3 Pressure plate glazing gasket 911 845
- 4 Pressure plate profile 419 401
- 5 Façade fixing screw 911 944
- 6 Glass support 911 853
- 7 Transom housing gasket 911 801

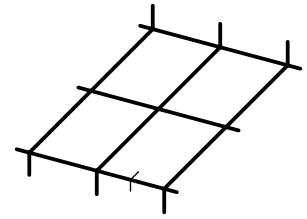


Transom area

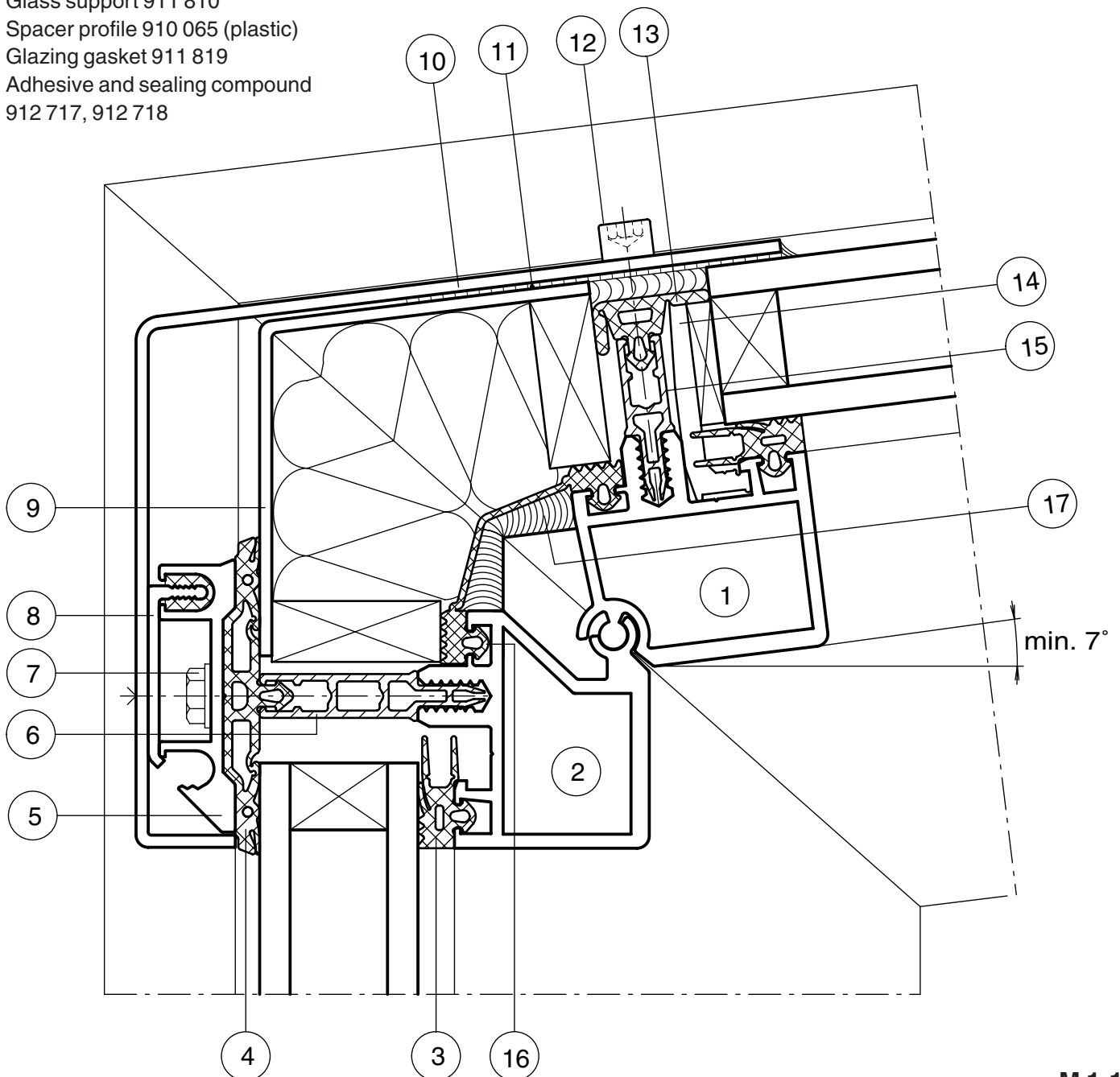


M 1:1

- 1 Transom profile 519 320
- 2 Transom profile 519 321
- 3 Internal glazing gasket, depending on the thickness of the glass / insert element, cf. glazing tables
- 4 Pressure plate glazing gasket 911 830
- 5 Pressure plate profile 419 403
- 6 Spacer profile 910 066 (plastic)
- 7 Façade fixing screw 911 914
- 8 Fixing material 911 564
- 9 Folded sheet, 2.0 mm thick, continuous, to be supplied by customer
- 10 Folded sheet, 2.0 mm thick, continuous, to be supplied by customer
- 11 Adhesive tape 3M Y 4945 (Scotch Acrylic Foam or equivalent), to be supplied by customer
- 12 Façade fixing screw 911 943
- 13 Gasket 911 805
- 14 Glass support 911 810
- 15 Spacer profile 910 065 (plastic)
- 16 Glazing gasket 911 819
- 17 Adhesive and sealing compound 912 717, 912 718

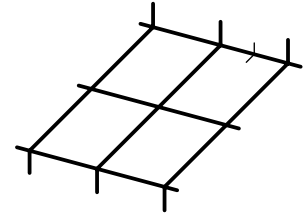


Transom area, internal corner
(roof pitch at least 7°)

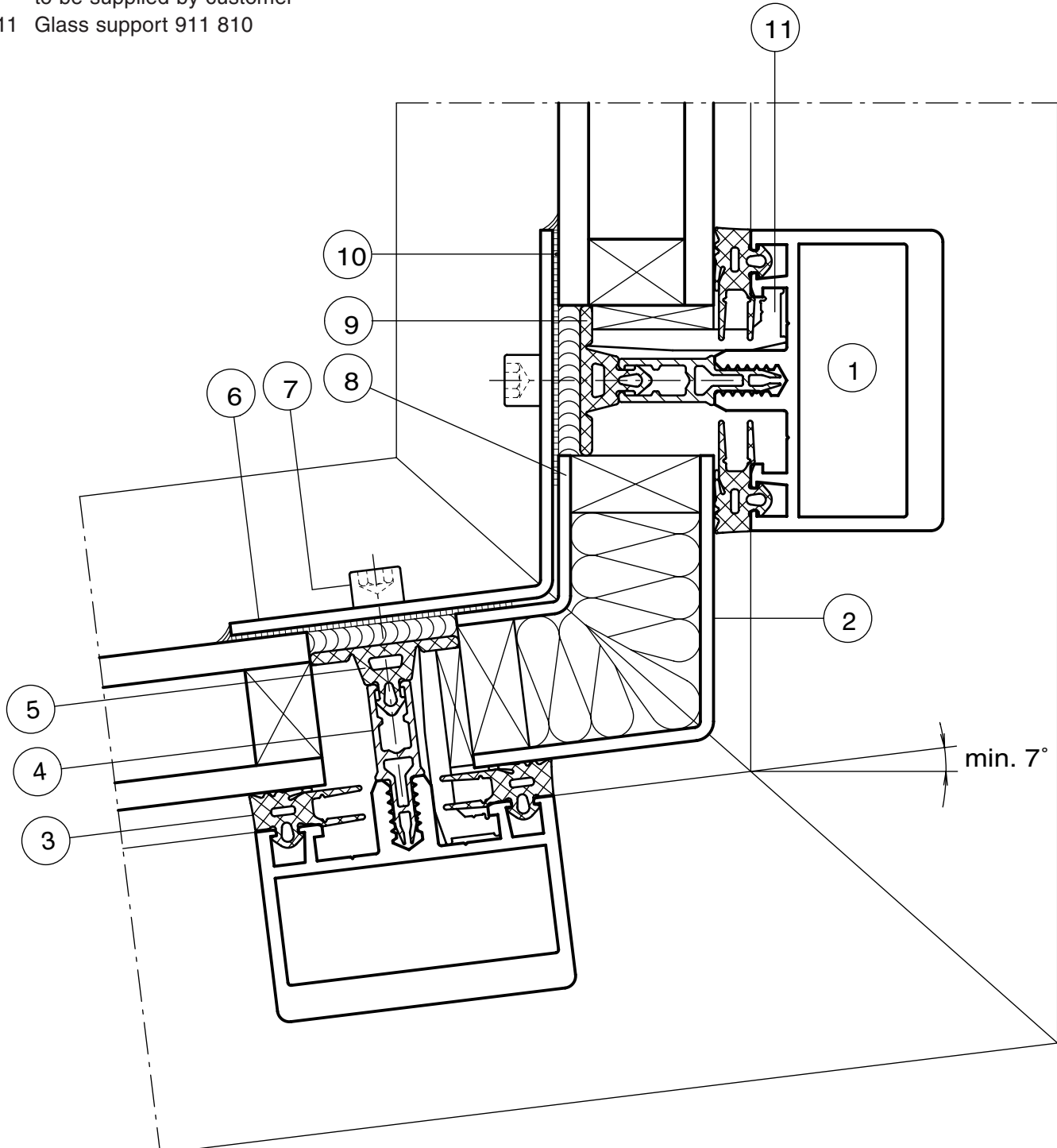


M 1:1

- 1 Transom profile 519 300
- 2 Folded sheet, 2.0 mm thick, continuous, to be supplied by customer
- 3 Internal glazing gasket, depending on the thickness of the glass / insert element, cf. glazing tables
- 4 Spacer profile 910 065 (plastic)
- 5 Gasket 911 805
- 6 Folded sheet, 2.0 mm thick, continuous, to be supplied by customer
- 7 Façade fixing screw 911 943
- 8 Folded sheet, 2.0 mm thick, continuous, to be supplied by contractor
- 9 Gasket 911 805
- 10 Adhesive tape 3M Y 4945 (Scotch Acrylic Foam or equivalent), to be supplied by customer
- 11 Glass support 911 810

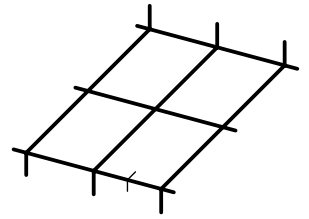


Transom area, internal corner
(roof pitch at least 7°)

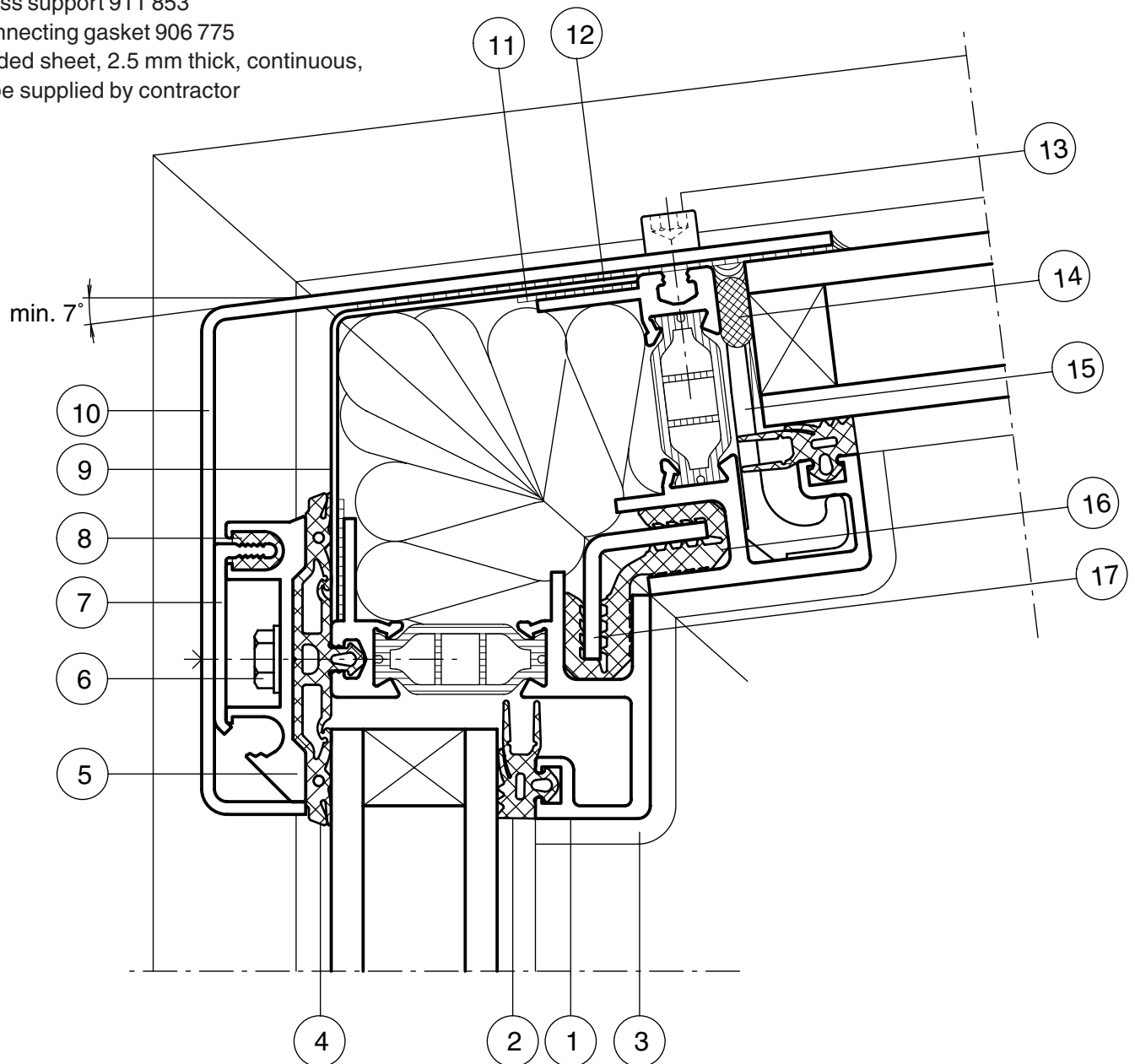


M 1:1

- 1 Transom profile 419 371
- 2 Internal glazing gasket, depending on the thickness of the glass / insert element, cf. glazing tables
- 3 Transom housing gasket 994 507, supplemented by gasket 911 718
- 4 Pressure plate glazing gasket 911 830
- 5 Pressure plate profile 419 403
- 6 Façade fixing screw 911 932
- 7 Fixing material 911 564
- 8 Rubber clip piece 906 789
- 9 Folded sheet, 1.0 mm thick, continuous, to be supplied by contractor
- 10 Folded sheet, 2.0 mm thick, continuous, to be supplied by contractor
- 11 Adhesive tape 3M Y 4945 (Scotch Acrylic Foam or equivalent), to be supplied by customer
- 12 Adhesive tape 3M Y 4945 (Scotch Acrylic Foam or equivalent), to be supplied by customer
- 13 Façade fixing screw 911 944- 14 Backing cord made of rubber foam, sealing, to be supplied by customer
- 15 Glass support 911 853
- 16 Connecting gasket 906 775
- 17 Folded sheet, 2.5 mm thick, continuous, to be supplied by contractor

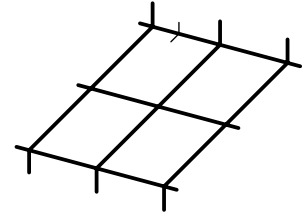


Transom area
External corner
(roof pitch at least 7°)

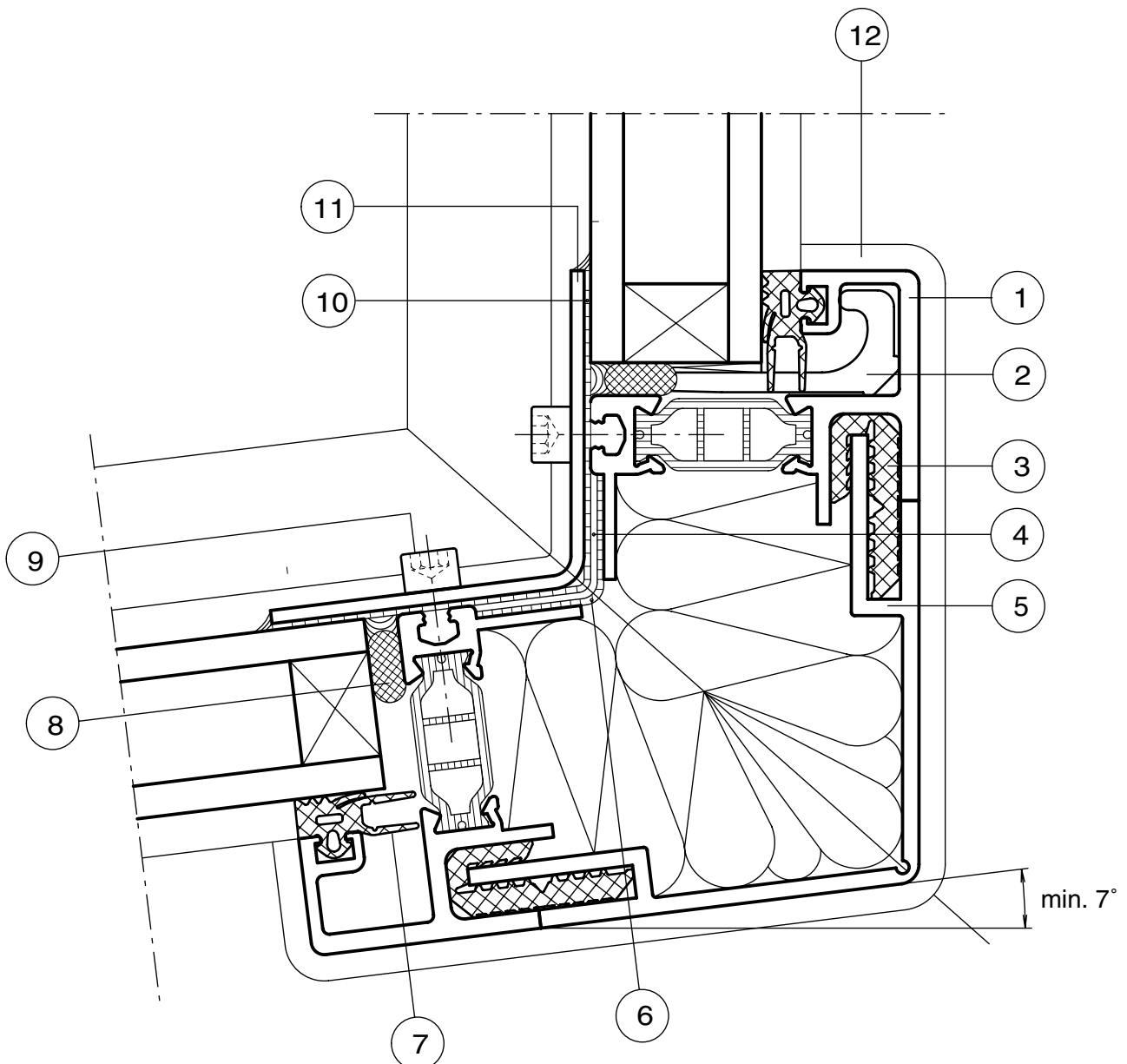


M 1:1

- 1 Transom profile 419 371
- 2 Glass support 911 853
- 3 Connecting gasket 906 775
- 4 Folded sheet, 1.0 mm thick, continuous, to be supplied by contractor
- 5 Supplementary profile 460 909
- 6 Adhesive tape 3M Y 4945 (Scotch Acrylic Foam or equivalent),
to be supplied by customer
- 7 Internal glazing gasket, according to the thickness of the
glass / insert element, cf. glazing tables
- 8 Backing cord made of rubber foam, sealing, to be supplied by customer
- 9 Façade fixing screw 911 944
- 10 Sealing tape 907 763, continuous
- 11 Folded sheet, 2.0 mm thick, to be supplied by customer
- 12 Transom housing gasket 994 507, supplemented by gasket 911 718

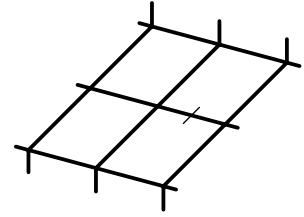


Transom area
Internal corner 97°
(roof pitch at least 7°)

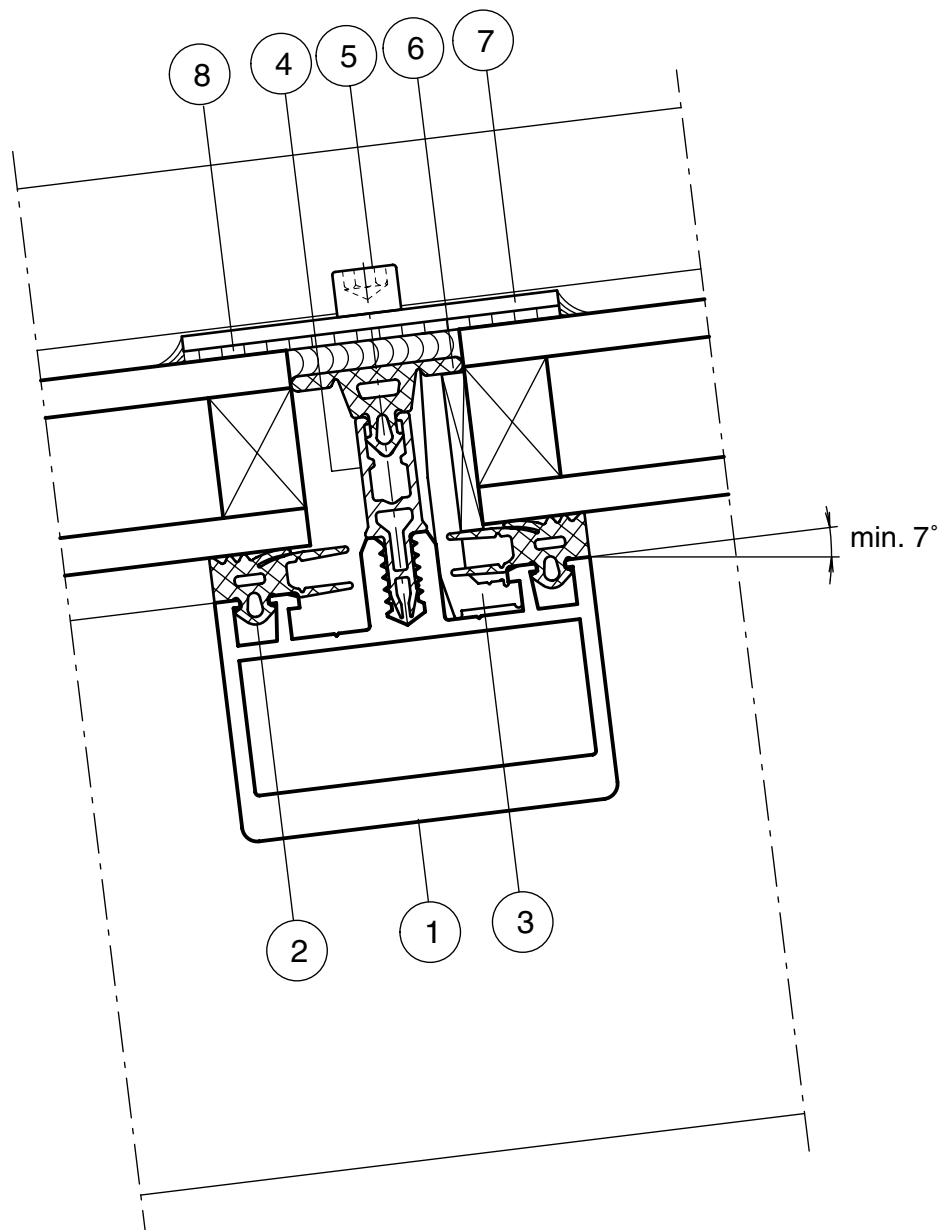


M 1:1

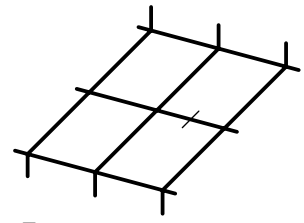
- 1 Transom profile 519 300
- 2 Internal glazing gasket, depending on the thickness of the glass / insert element, cf. glazing tables
- 3 Glass support 911 810
- 4 Spacer profile 910 065 (plastic)
- 5 Façade fixing screw 911 943
- 6 Gasket 911 805
- 7 Sheet metal strip, thickness = 2.0 mm x 50 mm, to be supplied by customer
- 8 Sealing tape, 50 x 1.5 mm, 911 828, continuous



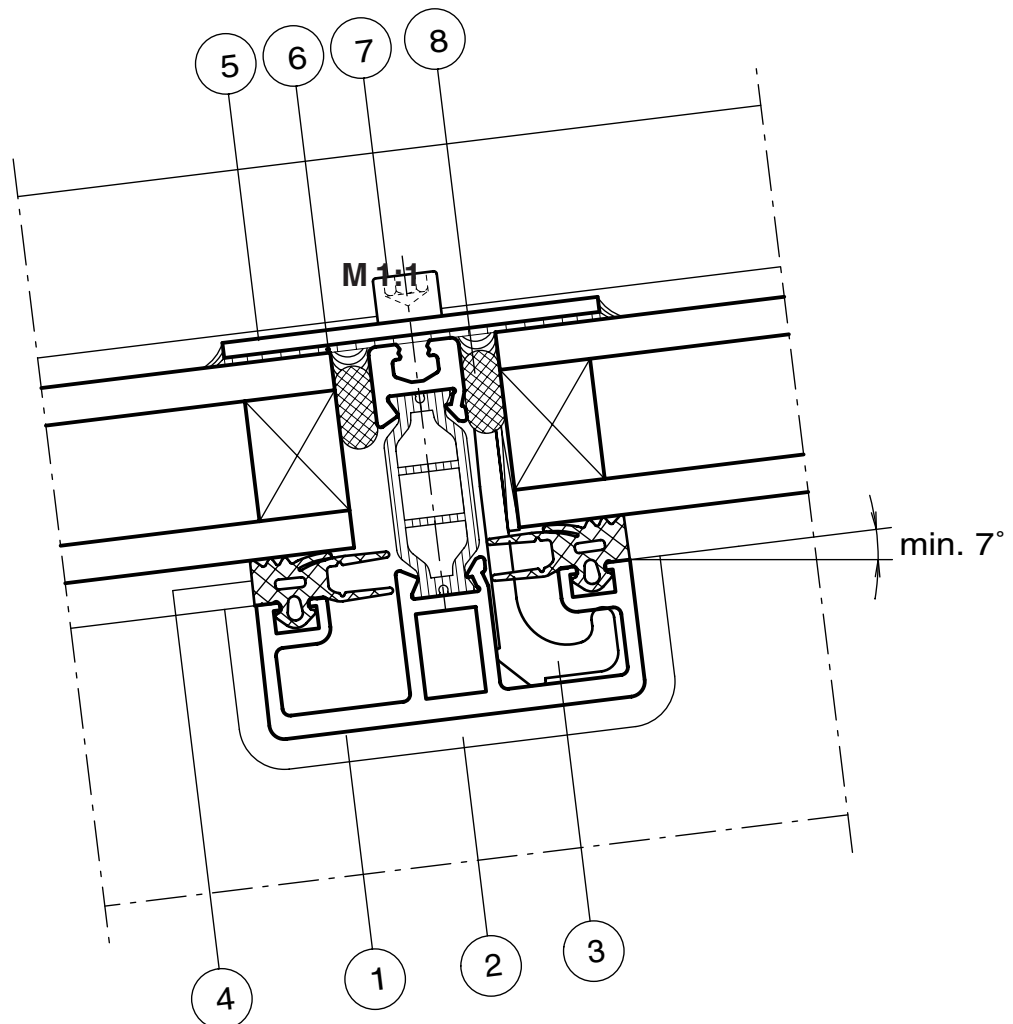
Transom area
Roof pitch at least 7°



- 1 Transom profile 519 310
- 2 Transom housing gasket 911 801
- 3 Glass support 911 853
- 4 Internal glazing gasket, depending on the thickness of the glass / insert element, cf. glazing tables
- 5 Sheet metal strip, thickness 2.0 mm x 50 mm, to be supplied by customer
- 6 Sealing tape, 50 x 1.5 mm, 911 828, continuous
- 7 Façade fixing screw 911 944
- 8 Backing cord made of rubber foam, sealing, to be supplied by customer



Transom area
Roof pitch at least 7°



M 1:1